

Introduction

Methodology

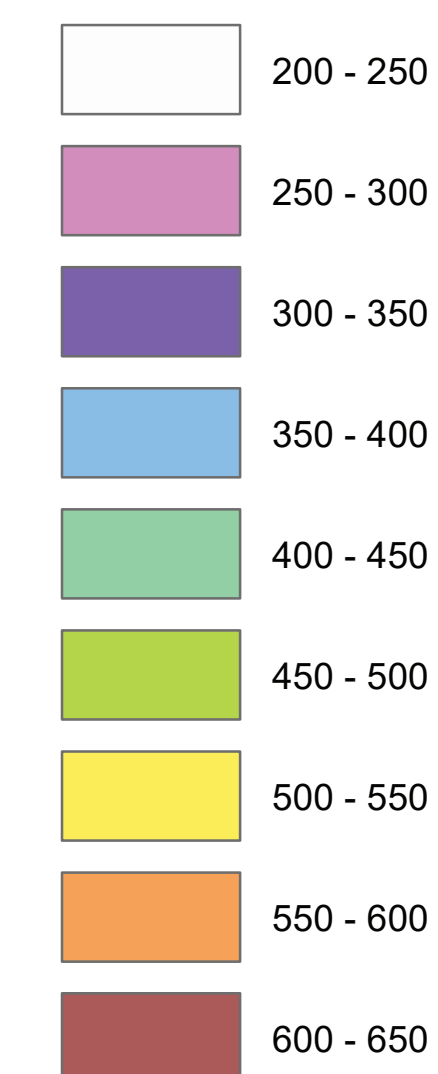
Explanation

Summary

The New York State Museum – Geological Survey has developed a detailed Bedrock Topography Map for Orleans County. This map represents a compilation of various surficial and subsurface bedrock data sources, analytical methods, and quality control procedures. The resulting bedrock elevations reveal a range of distinct geological features including a variety of Paleozoic bedrock erosional profiles, and evidence of past glaciation. These characteristics are likely the result of a variety of functions including bedrock stratigraphy, structural deformation, and erosional processes such as past glaciation and fluvial geomorphology. This map is significant for applications in geological research, engineering, natural resource management, and environmental studies. Continued research and work on subsurface geology will provide additional data and insight and enhance the geologic framework of bedrock geology throughout New York State.

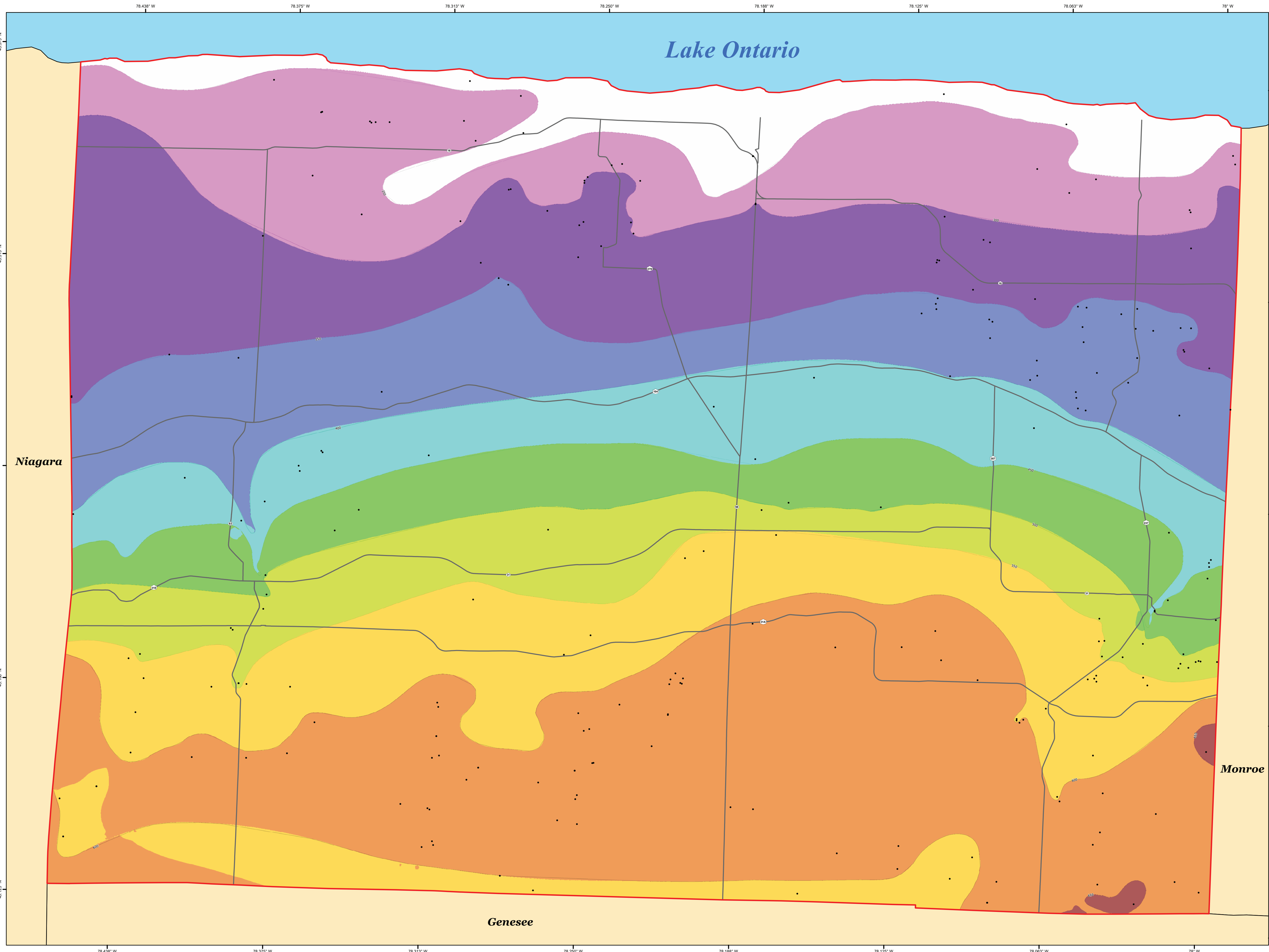
Bedrock Topography

Feet-amsl

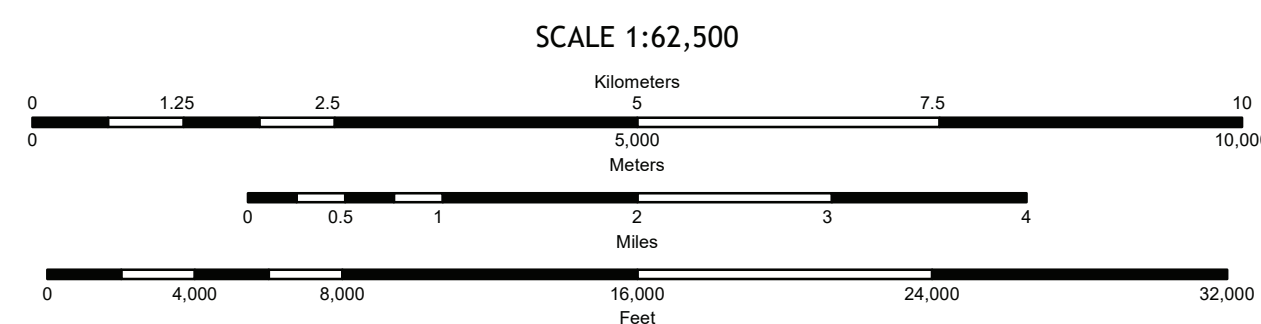


COUNTY LOCATION

New York State Museum Map & Chart No. 181
ISSN:0097-3793 ; ISBN:978-1-55557-435-2



Geographic and hydrography data obtained from the NYSGIS Clearinghouse:
(<https://gis.ny.gov/>)



NOTICE

This geologic map was funded in part by the USGS National Cooperative Geologic Mapping Program award number **G26ACW018** in the year 2011.

The views and conclusions contained in this document are those of the authors and should not be interpreted as necessarily representing the official policies, either expressed or implied, of the U.S. Government.

While every effort has been made to ensure the integrity of this digital map and the actual data upon which it is based, the New York State Geological Department (NYSDOG) makes no representation or warranty, expressed or implied, with respect to its location, completeness, or usefulness for any particular purpose or use. NYSDOG assumes no liability for damages resulting from the use of any information, apparatus, method, or process disclosed in this map and does not warrant independent, third-party verification of the information contained herein. Any use of trade, product, or firm names is for descriptive purposes only and does not imply endorsement by NYSDOG.

Disclaimer: Geologic Map Labels

Elevation contours on this map may display minor inaccuracies resulting from the rasterization process. For correct elevation details, refer to the contour data