

**BEDROCK TOPOGRAPHY OF
GENESEE COUNTY, NEW YORK**

Karl J. Backhaus and Akeed Alrubay
2023

Introduction

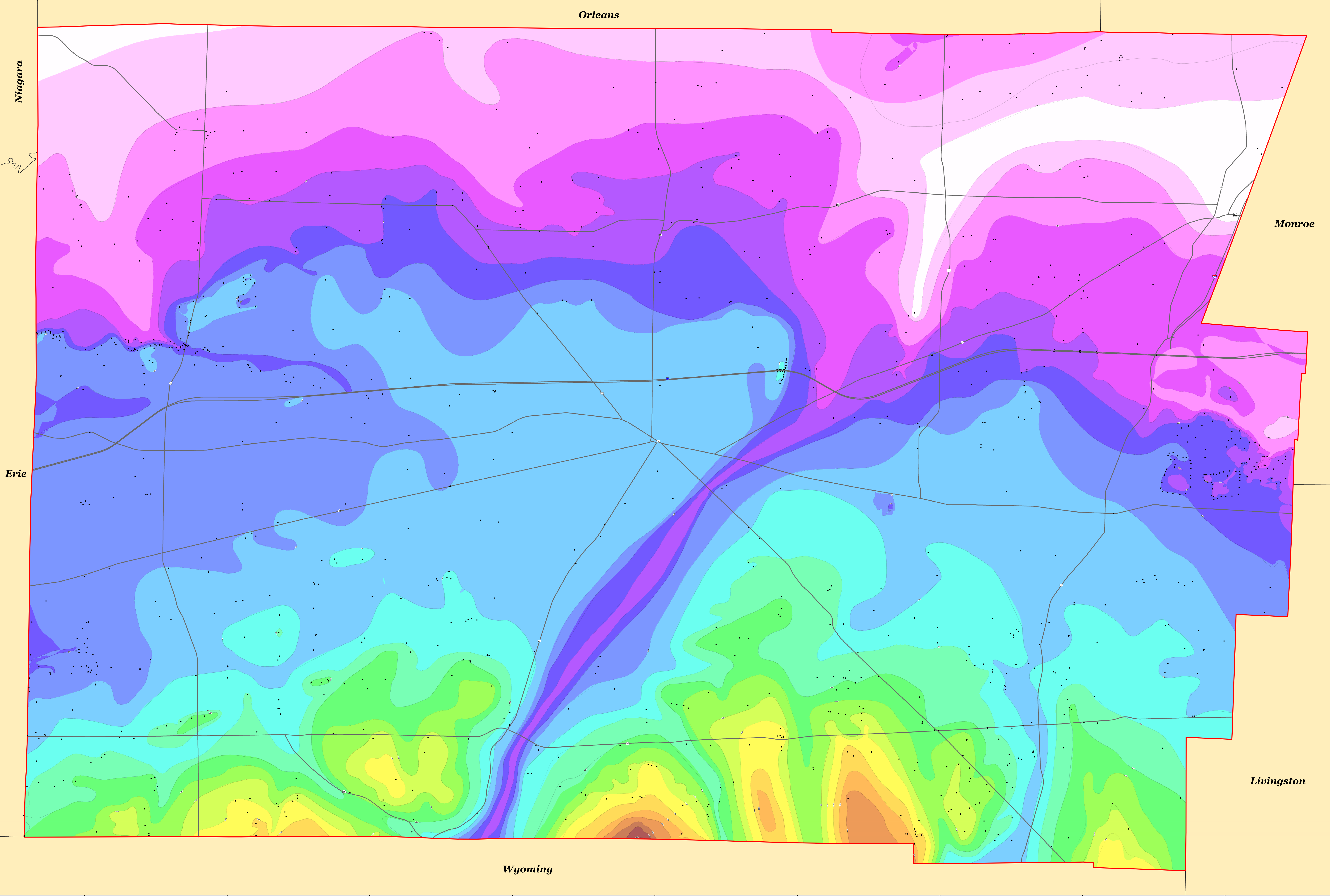
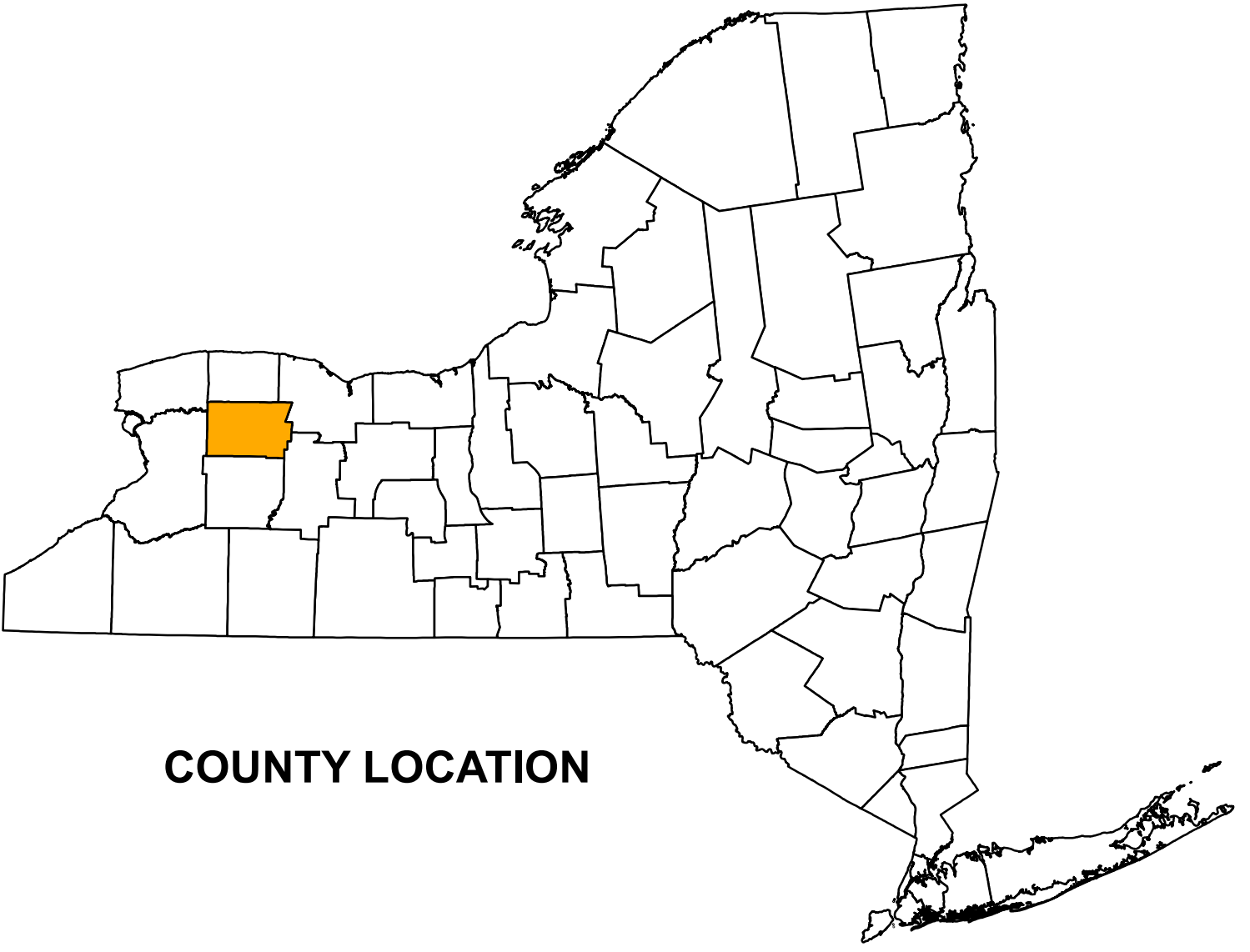
Beginning in 2019, under the guidance and funding provided by the United States Geological Survey - Great Lakes Geological Mapping Coalition (award G20AC00401), the New York State Museum - Geological Survey began a statewide effort to conduct geologic mapping of bedrock elevations throughout New York. Genesee County, of western New York, extends from the Erie-Ontario Lowlands and Allegheny Plateau physiographic provinces. The county is surrounded by six adjacent counties: Erie, Livingston, Monroe, Niagara, Orleans, and Wyoming. Genesee County is also located along two large bodies of water, Lake Ontario and Oneida Lake. Surficial and subsurface bedrock point data and maps were compiled from publicly available sources, vetted, and organized into a comprehensive geospatial database. A technical workflow was developed to categorize the overall geology and differentiate between the underlying bedrock and overlying unconsolidated sediments. The resulting bedrock elevation map provides a detailed representation of bedrock topography across Genesee County. This map is useful for various applications, including geological studies, engineering and construction, natural resource management (such as water or mineral resources), and environmental studies.

Methodology

A total of 1,035 bedrock control points were used to delineate bedrock topography in Genesee County. These points consisted of 816 water wells, 177 bedrock outcrops, 15 waterfall locations, 14 engineering boreholes, seven oil and gas wells, and six thruway engineering boreholes. These data were compiled from a variety of public sources and imported into ESRI's ArcMap 10.8 software platform. Ground surface elevations for all control points were extracted from a compilation of three separate digital elevation models (DEM) which were resampled to match a 1-meter LIDAR DEM cell size. Bedrock elevations were calculated at each location by subtracting the depth-to-bedrock from the ground surface elevation. 50-foot bedrock elevation contours were auto-generated and manually refined through a multi-step quality control process to resolve any interpolation errors. The finalized contours were converted into a 1-meter raster, using the "Topo to Raster" tool, that represents county-wide bedrock topography.

Summary

The New York State Museum – Geological Survey has developed a detailed Bedrock Topography Map for Genesee County. This map represents a compilation of various surficial and subsurface bedrock data sources, analytical methods, and quality control procedures. The resulting bedrock elevations reveal a range of distinct geological features including a variety of Paleozoic bedrock erosional profiles, and evidence of past glaciation. These characteristics are likely the result of a variety of functions including bedrock stratigraphy, structural deformation, and erosional processes such as past glaciation and fluvial geomorphology. This map is significant for applications in geological research, engineering, natural resource management, and environmental studies. Continued research and work on subsurface geology will provide additional data and insight and enhance the geologic framework of bedrock geology throughout New York State.

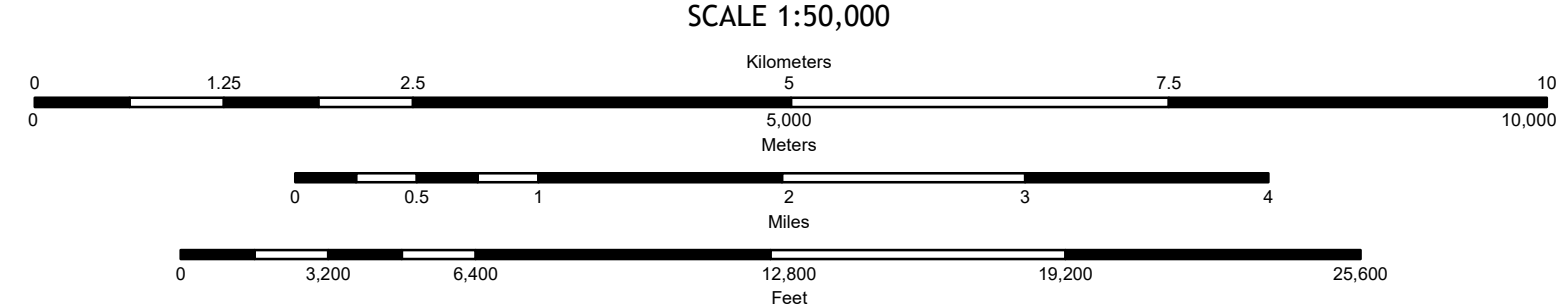


Digital Data and Cartography by K. Backhaus and A. Alrubay, 2022-23

Universal Transverse Mercator, Zone 18 N North American Datum of 1983

Geographic data obtained from the NYSGIS Clearinghouse:

(<https://gis.ny.gov/>)



NOTES:
This product was last updated in part by the 2023 National Topographic Database Mapping Program (NTDMP) award number: 58848989 in the year 2021.
The data and contours are compiled as the data was collected on the basis of the author and should not be interpreted as necessarily representing the official position, either expressed or implied, of the U.S. Government.
While every effort has been made to ensure the integrity of this digital map and the digital data upon which it is based, the New York State Education Department (NYSED) cannot be held responsible for errors, omissions, or for any consequences arising from the use of the information contained herein. The user assumes all liability for any errors, omissions, or for any consequences arising from the use of the information contained herein. The user assumes all liability for any errors, omissions, or for any consequences arising from the use of the information contained herein. The user assumes all liability for any errors, omissions, or for any consequences arising from the use of the information contained herein.

