

**BEDROCK TOPOGRAPHY OF
STEBEN COUNTY, NEW YORK**

Hailey Mundell and Richard A. Frieman

2024

Introduction

Beginning in 2019, under the guidance and funding provided by the United States Geological Survey - Great Lakes Geological Mapping Coalition (award G20AC00401), the New York State Museum - Geological Survey began a statewide effort to conduct geologic mapping of bedrock elevations throughout New York. Steuben County, of southwestern New York, is in the Alleghany Plateau physiographic province. The county is nestled between Allegany, Livingston, Ontario, Yates, Schuyler, and Chemung Counties with Pennsylvania to the south. Steuben County is also located along one large body of water, Keuka Lake. Surficial and subsurface bedrock point data and maps were compiled from publicly available sources, vetted, and organized into a comprehensive geospatial database. A technical workflow was developed to categorize the overall geology and differentiate between the underlying bedrock and overlying unconsolidated sediments. The resulting bedrock elevation map provides a detailed representation of bedrock topography across Steuben County. This map is useful for various applications, including geological studies, engineering and construction, natural resource management (such as water or mineral resources), and environmental studies.

Methodology

A total of 3,947 bedrock control points were used to delineate bedrock topography in Steuben County. These points consisted of 2,556 water wells, 157 thruway engineering boreholes, 1,171bedrock outcrops, 49 waterfall locations and 14 oil and gas wells. These data were compiled from a variety of public sources and imported into ESRI's ArcMap 10.8 software platform. Ground surface elevations for all control points were extracted from a compilation of three separate digital elevation models (DEMs) which were resampled to match a 1-meter LIDAR DEM cell size. Bedrock elevations were calculated at each location by subtracting the depth-to-bedrock from the ground surface elevation. Fifty-foot bedrock

elevation contours were auto-generated and manually refined through a multi-step quality control process to resolve any interpolation errors. The finalized contours were converted into a 1-meter raster, using the "Topo to Raster" tool, that represents county-wide bedrock topography.

Explanation

- Data Point
- 50ft Bedrock Elevation Contour
- 100ft Bedrock Elevation Contour
- Highway
- Steuben County Line
- Adjacent County
- New York State Line
- Water Body

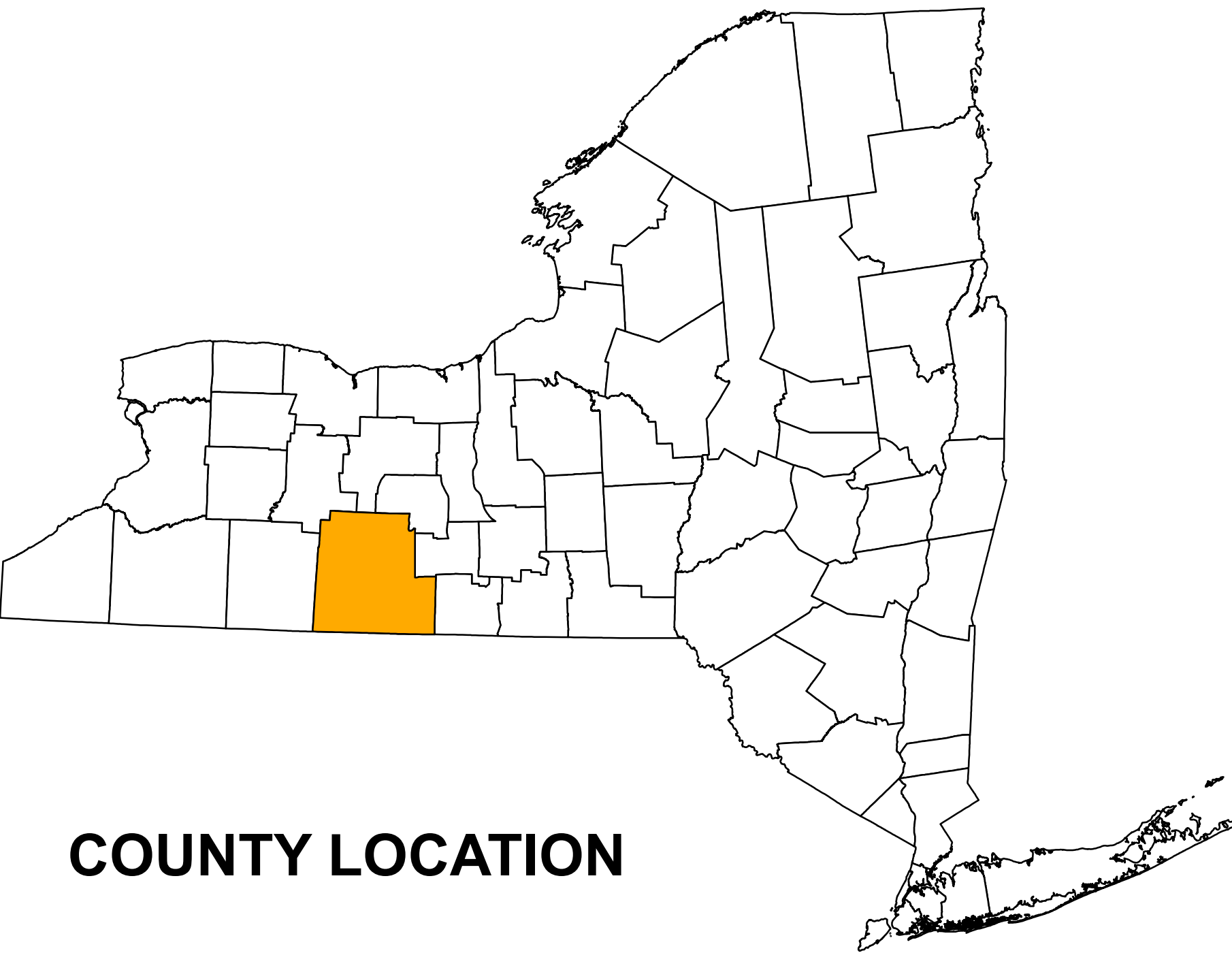
Bedrock Topography

Feet-amsl

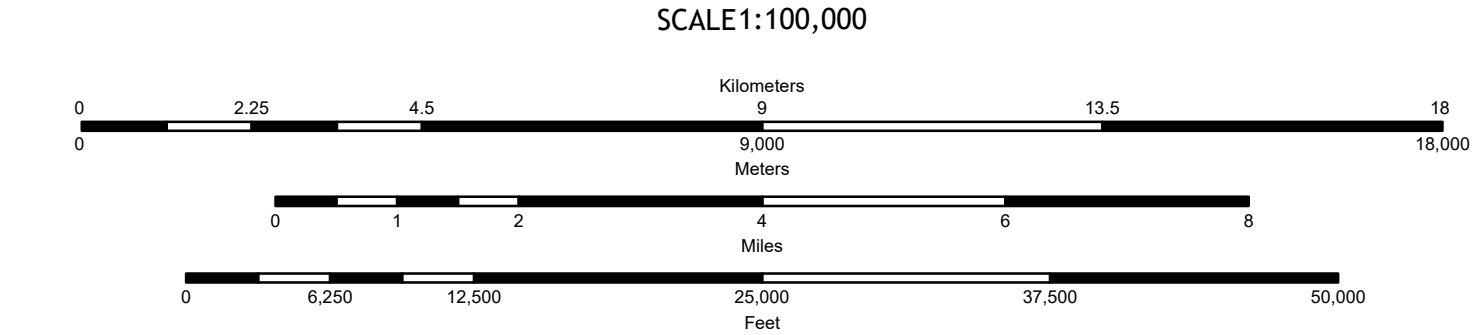
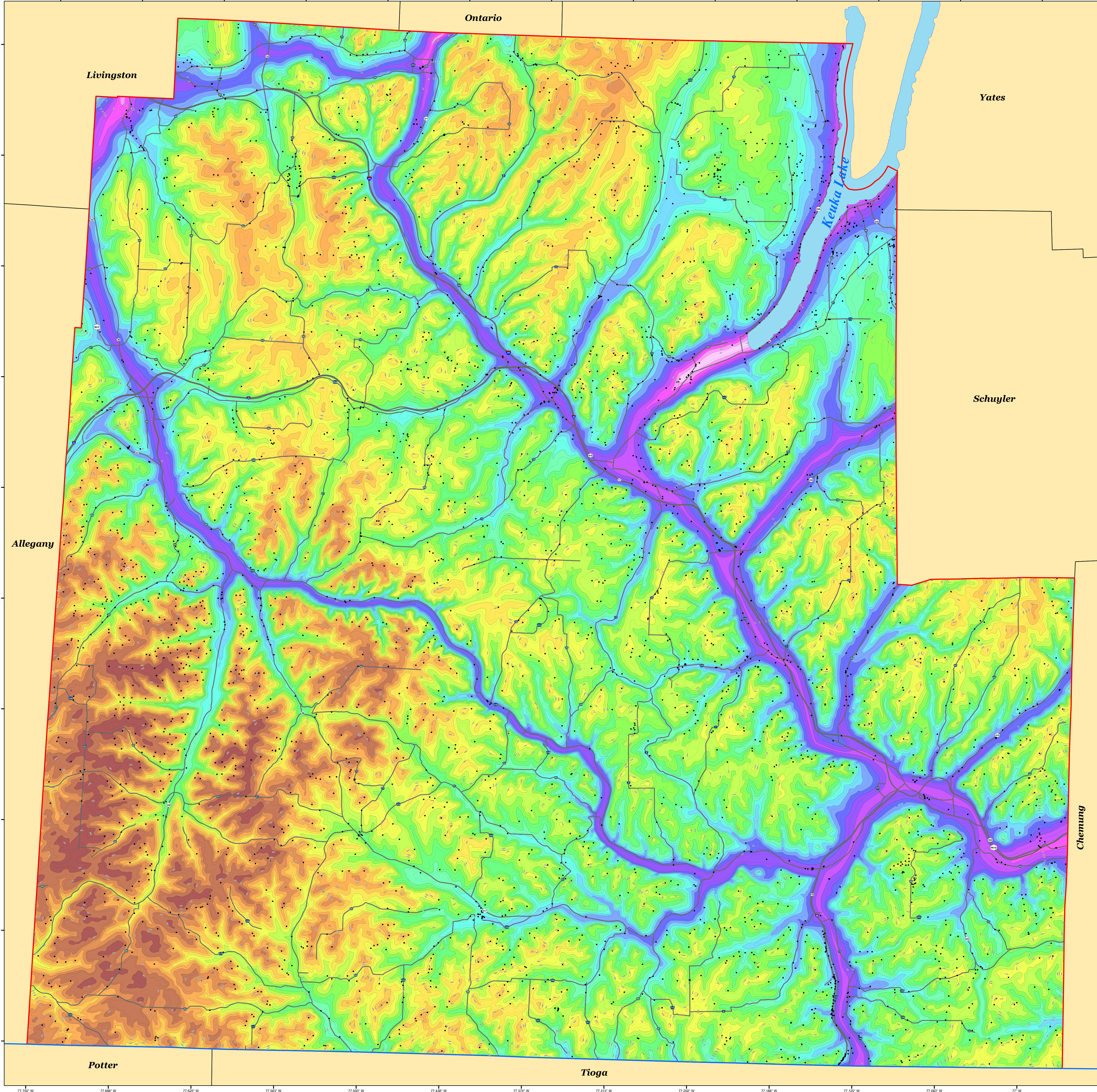
- 300 - 400
- 400 - 500
- 500 - 600
- 600 - 700
- 700 - 800
- 800 - 900
- 900 - 1,000
- 1,000 - 1,100
- 1,100 - 1,200
- 1,200 - 1,300
- 1,300 - 1,400
- 1,400 - 1,500
- 1,500 - 1,600
- 1,600 - 1,700
- 1,700 - 1,800
- 1,800 - 1,900
- 1,900 - 2,000
- 2,000 - 2,100
- 2,100 - 2,200
- 2,200 - 2,300
- 2,300 - 2,400

Summary

The New York State Museum – Geological Survey has developed a detailed Bedrock Topography Map for Steuben County. This map represents a compilation of various surficial and subsurface bedrock data sources, analytical methods, and quality control procedures. The resulting bedrock elevations reveal a range of distinct geological features including a variety of Paleozoic bedrock erosional profiles, and evidence of past glaciation. These characteristics are likely the result of a variety of functions including bedrock stratigraphy, structural deformation, and erosional processes such as past glaciation and fluvial geomorphology. This map is significant for applications in geological research, engineering, natural resource management, and environmental studies. Continued research and work on subsurface geology will provide additional data and insight and enhance the geologic framework of bedrock geology throughout New York State.



COUNTY LOCATION



NOTICE
This geologic map was funded in part by the USGS National Cooperative Geologic Mapping Program (NCGMP) award number: G08AC00041. The colors and contouring displayed in this document are those of the authors and should not be interpreted as necessarily representing the official position, views, or policies of the U.S. Government.
This map and data have been created to ensure the integrity of this digital map and the digital data upon which it is based. The New York State Geological Survey (NYSGS) assumes no liability for damages resulting from the use of any information, especially, methods, or products described in this map and data, and makes no representation or warranty of the information contained herein. The use of this product, or the contents of this product, is solely your responsibility.

