

DRIFT THICKNESS OF ONONDAGA COUNTY, NEW YORK

Julia E. Rogerson, Avery W. Blake and Karl J. Backhaus
2024

Introduction

Beginning in 2019, under the guidance and funding provided by the United States Geological Survey - Great Lakes Geological Mapping Coalition (award G20AC00418), the New York State Museum - Geological Survey began a statewide effort to conduct geologic mapping of bedrock elevations throughout New York. Onondaga County, of western New York, extends from the Central Lowlands to the Appalachian Plateau physiographic provinces. The county is nestled between Cayuga, Cortland, Madison, Oswego and Otsego counties. Onondaga County is also located along the south shore of Oneida Lake. Surficial and subsurface bedrock point data and maps were compiled from publicly available sources, vetted, and organized into a comprehensive geospatial database. A technical workflow was developed to categorize the overall geology and differentiate between the underlying bedrock and overlying unconsolidated sediments. The resulting bedrock elevation map provides a detailed representation of bedrock topography across Onondaga County. This map is useful for various applications, including geological studies, engineering and construction, natural resource management (such as water or mineral resources), and environmental studies.

Methodology

A total of 2,337 bedrock control points were used to delineate bedrock topography in Onondaga County. These points consisted of 1,479 water wells, 596 bedrock outcrops, 105 engineering boreholes, 103 thruway engineering boreholes, and 54 waterfall locations. These data were compiled from a variety of public sources and imported into ESRI's ArcMap 10.8 software platform. Ground surface elevations for all control points were extracted from a compilation of three separate digital elevation models (DEM) which were resampled to match a 1-meter LIDAR DEM cell size. Bedrock elevations were calculated at each location by subtracting the depth-to-bedrock from the ground surface elevation. 50-foot bedrock elevation contours were auto-generated and manually refined through a multi-step quality control process to resolve any interpolation errors. The finalized contours were converted into a 1-meter raster, using the "Topo to Raster" tool, that represents county-wide bedrock topography. Lastly, the "Raster Calculator" tool is used to subtract the surface elevation from the bedrock elevation to determine the thickness of the drift in the county.

Explanation

- Data Point
- 50ft Drift Thickness Contour
- 100ft Drift Thickness Contour
- Highway
- Onondaga County Line
- Adjacent County
- Water Body

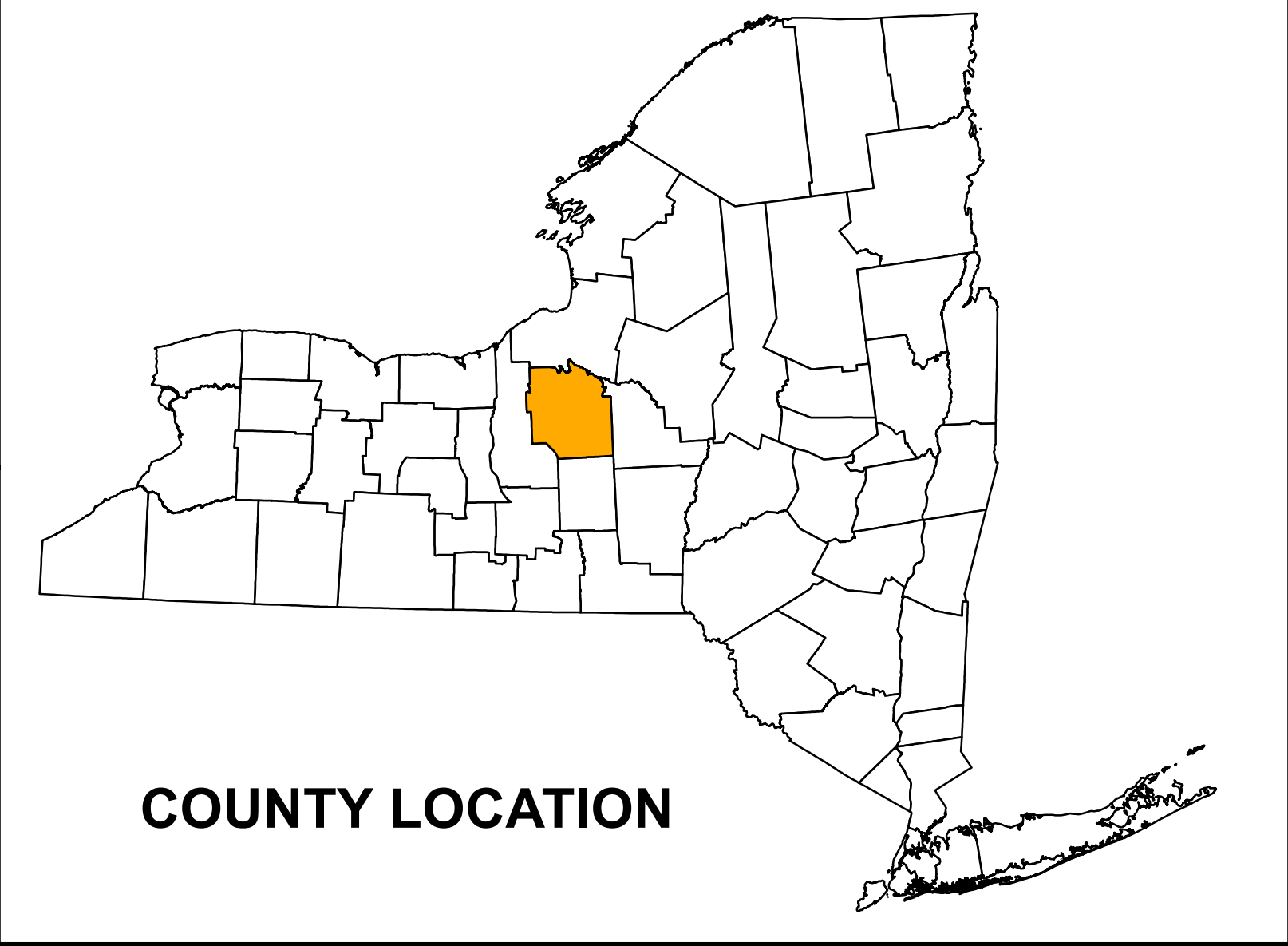
Drift Thickness

Feet Thick

- 0 - 10
- 10 - 20
- 20 - 30
- 30 - 40
- 40 - 50
- 50 - 60
- 60 - 70
- 70 - 80
- 80 - 90
- 90 - 100
- 100 - 110
- 110 - 120
- 120 - 130
- 130 - 140
- 140 - 150
- 150 - 250
- 250 - 350
- 350 - 450
- 450 - 550
- 550 - 650
- 650 - 750
- 750 - 850

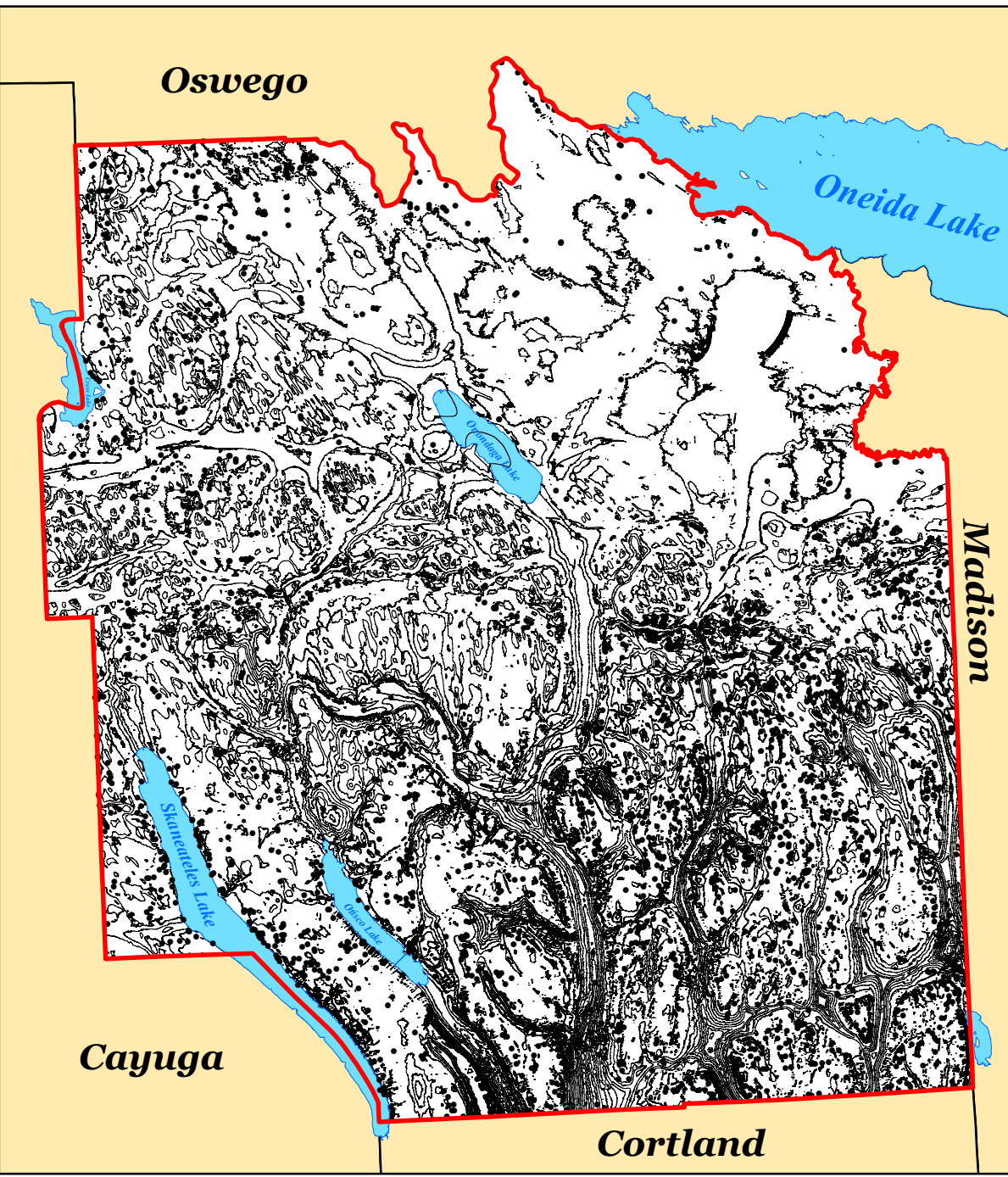
Summary

The New York State Museum – Geological Survey has developed a detailed Drift Thickness Map for Onondaga County. This map represents a compilation of various surficial and subsurface bedrock data sources, analytical methods, and quality control procedures. The resulting bedrock elevations reveal a range of distinct geological features including a variety of Paleozoic bedrock erosional profiles, and evidence of past glaciation. These characteristics are likely the result of a variety of functions including bedrock stratigraphy, structural deformation, and erosional processes such as past glaciation and fluvial geomorphology. This map is significant for applications in geological research, engineering, natural resource management, and environmental studies. Continued research and work on subsurface geology will provide additional data and insight and enhance the geologic framework of bedrock geology throughout New York State.



COUNTY LOCATION

DRIFT THICKNESS CONTOUR MAP



New York State Museum Map & Chart No. 210
ISSN:0097-3793 ; ISBN:978-1-55557-464-2

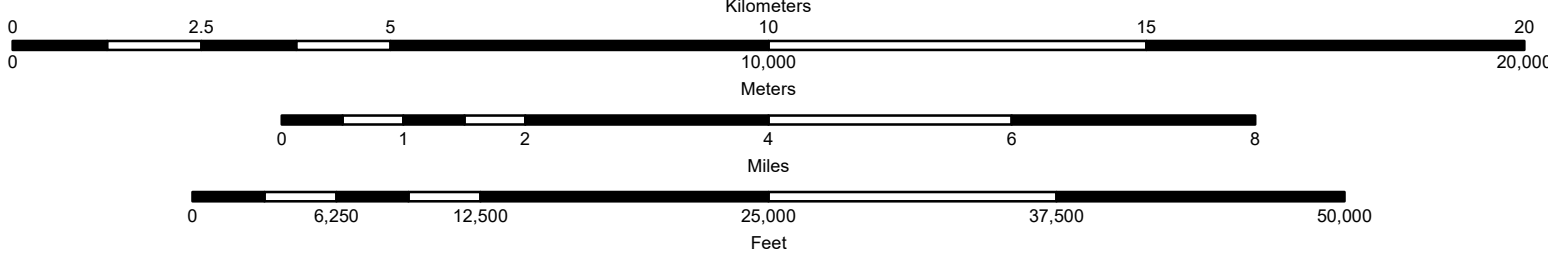
Digital Data and Cartography by J. Rogerson, A. Blake and K. Backhaus, 2022-24

Universal Transverse Mercator, Zone 18 N North American Datum of 1983

Geographic data obtained from the NYSGIS Clearinghouse
(<https://gis.ny.gov/>)

Shaded relief from 2019 FEMA 1m lidar data set
(<http://gis.ny.gov/elevation/index.cfm>)

SCALE 1:100,000



NOTES
This graphic map was created in part by the USGS National Cooperative Digital Mapping Program (NCDMP) award number: G20AC00418 in the year 2021.
The data and information presented in this document are those of the authors and should not be interpreted as necessarily representing the official position, either expressed or implied, of the U.S. Government.
While every effort has been made to ensure the accuracy of the data and information presented in this document, the New York State Geological Survey (NYSGS) makes no representation or warranty, expressed or implied, with respect to its accuracy, completeness, or suitability for any particular purpose or use. The user assumes all liability for any errors, omissions, or inaccuracies in the data and information presented in this document and for any use of the data and information presented in this document.
Any use of this product or the information contained herein is for informational purposes only and does not constitute a warranty of any kind.