

DRIFT THICKNESS OF ONEIDA COUNTY, NEW YORK

Sean P. Grasing
2024

Introduction

Beginning in 2019, under the guidance and funding provided by the United States Geological Survey - Great Lakes Geological Mapping Coalition (award G20AC00418), the New York State Museum - Geological Survey began a statewide effort to conduct geologic mapping of bedrock elevations throughout New York. Oneida County, in the Mohawk Valley region of New York, is in the physiographic provinces of the Allegheny Plateau, Central Lowlands, Tug Hill Plateau, Black River Valley, Adirondack Uplands and Mohawk River Valley. The county is adjacent to Oswego, Lewis, Otsego, Madison, and Herkimer counties. Oneida County contains the eastern half of Oneida Lake within its border. Surficial and subsurface bedrock point data and maps were compiled from publicly available sources, vetted, and organized into a comprehensive geospatial database. A technical workflow was developed to categorize the overall geology and differentiate between the underlying bedrock and overlying unconsolidated sediments. The resulting bedrock elevation map provides a detailed representation of bedrock topography across Oneida County. This map is useful for various applications, including geological studies, engineering and construction, natural resource management (such as water or mineral resources), and environmental studies.

Methodology

A total of 5,268 bedrock control points were used to delineate bedrock topography in Oneida County. These points consisted of 2,845 water wells, 2,081 bedrock outcrops, 304 thruway engineering boreholes and 38 waterfall locations. These data were compiled from a variety of public sources and imported into ESRI's ArcMap 10.8 software platform. Ground surface elevations for all control points were extracted from a compilation of three separate digital elevation models (DEM) which were resampled to match a 1-meter LIDAR DEM cell size. Bedrock elevations were calculated at each location by subtracting the depth-to-bedrock from the ground surface elevation. 50-foot bedrock elevation contours were auto-generated and manually refined through a multi-step quality control process to resolve any interpolation errors. The finalized contours were converted into a 1-meter raster, using the "Topo to Raster" tool, that represents county-wide bedrock topography. Lastly, the "Raster Calculator" tool is used to subtract the surface elevation from the bedrock elevation to determine the thickness of the drift in the county.

Summary

The New York State Museum – Geological Survey has developed a detailed Bedrock Topography Map for Oneida County. This map represents a compilation of various surficial and subsurface bedrock data sources, analytical methods, and quality control procedures. The resulting bedrock elevations reveal a range of distinct geological features including a variety of Paleozoic bedrock erosional profiles, and evidence of past glaciation. These characteristics are likely the result of a variety of functions including bedrock stratigraphy, structural deformation, and erosional processes such as past glaciation and fluvial geomorphology. This map is significant for applications in geological research, engineering, natural resource management, and environmental studies. Continued research and work on subsurface geology will provide additional data and insight and enhance the geologic framework of bedrock geology throughout New York State.

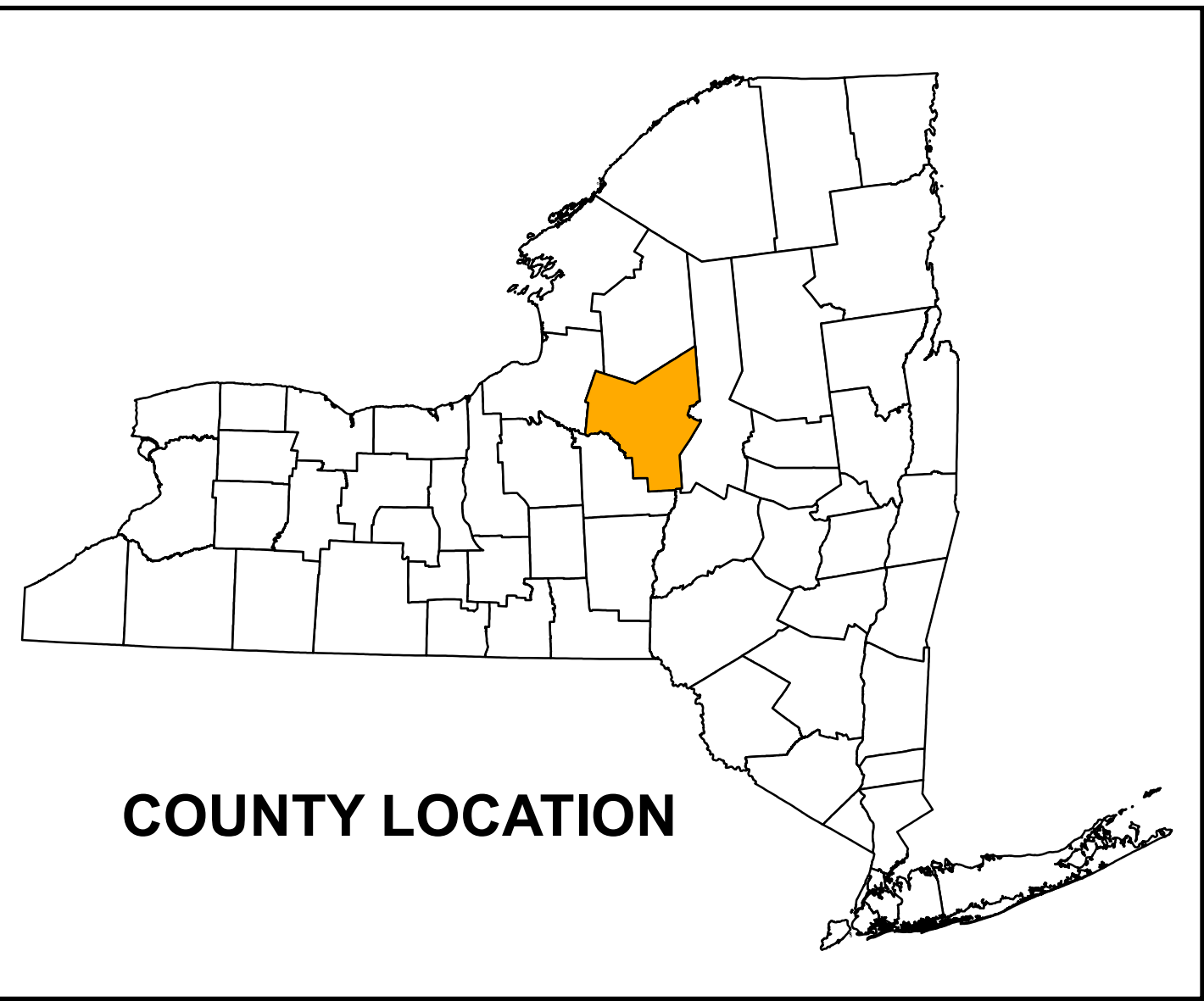
Explanation

- 50ft Drift Thickness Contour
- 100ft Drift Thickness Contour
- Oneida County Line
- Adjacent County
- Highway
- Water Body

Drift Thickness

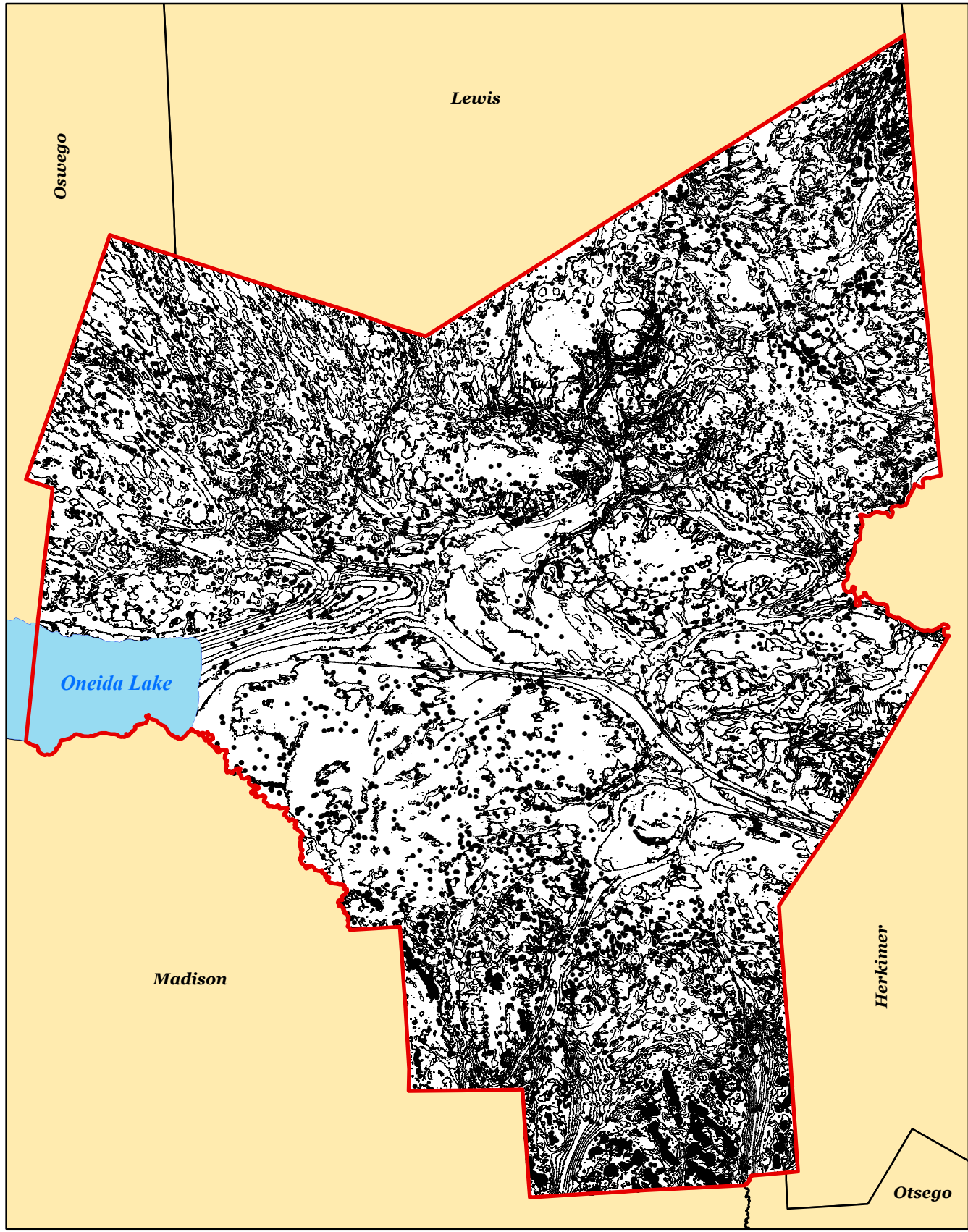
Feet Thick

- 0 - 10
- 10 - 20
- 20 - 30
- 30 - 40
- 40 - 50
- 50 - 60
- 60 - 70
- 70 - 80
- 80 - 90
- 90 - 100
- 100 - 150
- 150 - 250
- 250 - 350
- 350 - 450
- 450 - 550



COUNTY LOCATION

DRIFT THICKNESS CONTOUR MAP



Lewis

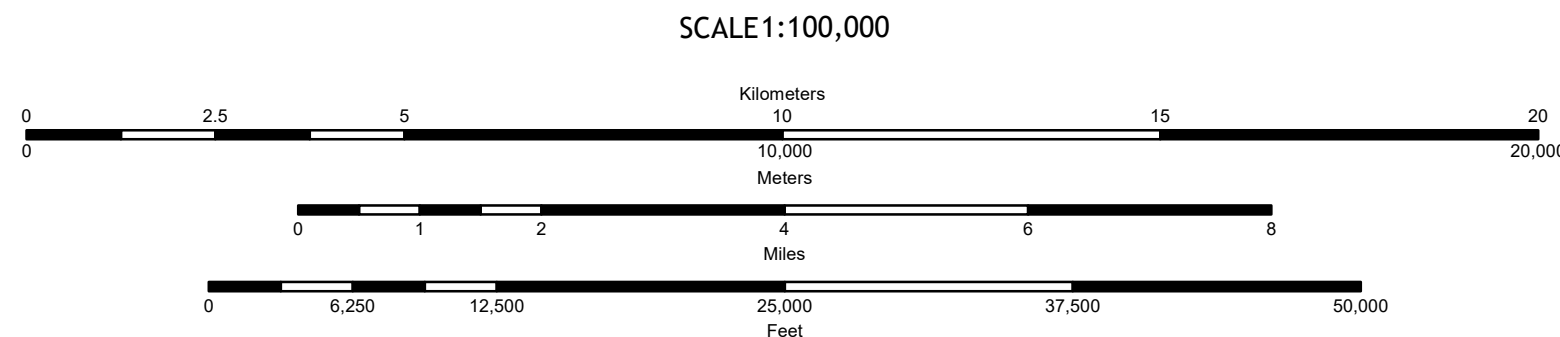
Oswego

Oneida Lake

Herkimer

Madison

Otsego



NOTICE
This map was created using data from the 2013 National Cooperative Geologic Mapping Program (NCGMP) and the 2013
The data and information contained in this document are those of the authors and should not be interpreted as necessarily representing the official policies, views
or opinions of the U.S. Government.
This map was created using data from the 2013 National Cooperative Geologic Mapping Program (NCGMP) and the 2013
The data and information contained in this document are those of the authors and should not be interpreted as necessarily representing the official policies, views
or opinions of the U.S. Government.

