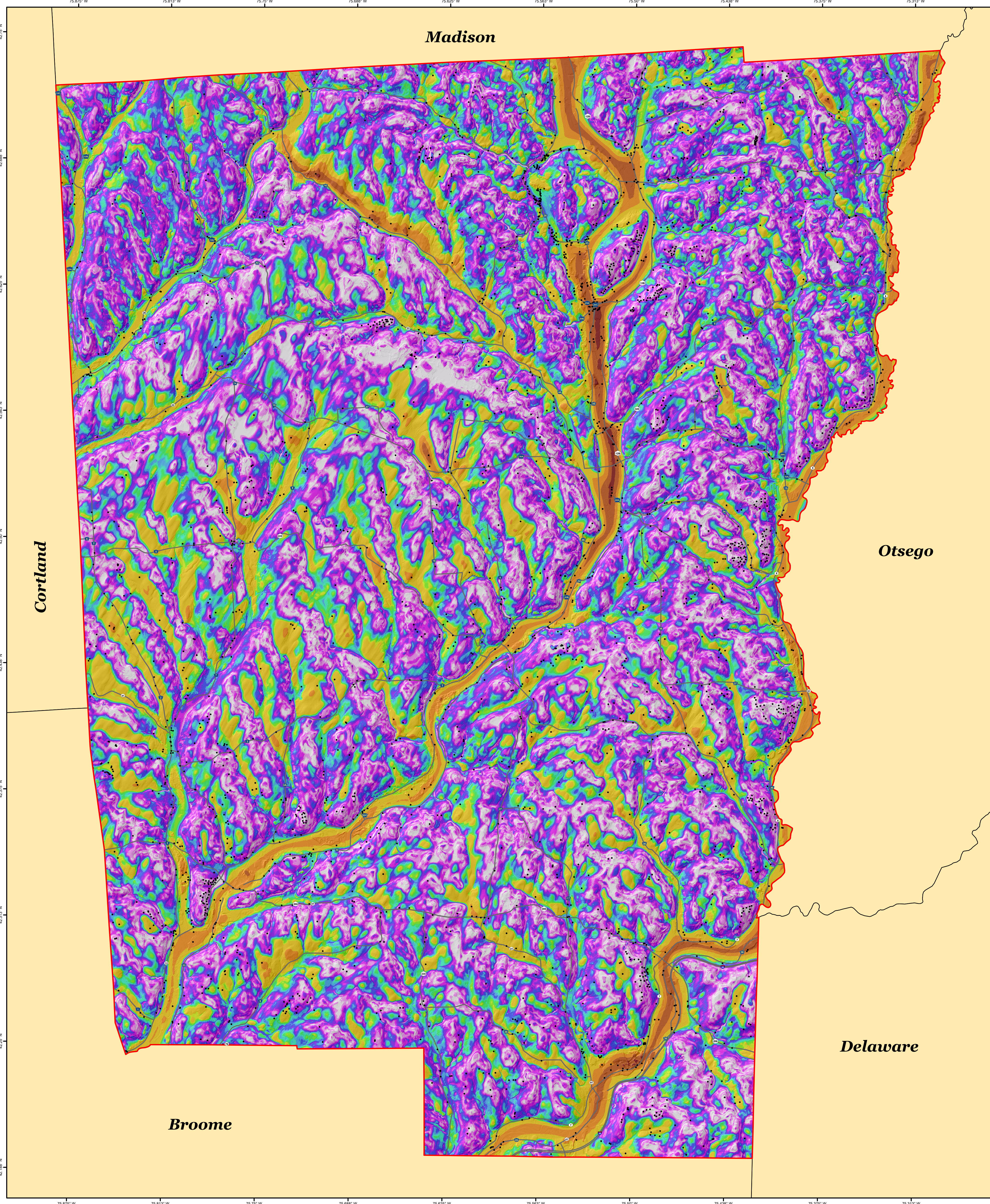


Hailey M. Forgeng and Avery W. Blake

2026



### Introduction

Beginning in 2019, under the guidance and funding provided by the United States Geological Survey - Great Lakes Geological Mapping Coalition (award G20AC00418), the New York State Museum - Geological Survey began a statewide effort to conduct geologic mapping of bedrock elevations throughout New York. Chenango County, of Central New York, extends in the Appalachian Plateau and Mohawk River Valley physiographic provinces. The county is adjacent Otsego and Delaware to the East, Cortland to the West, Broome to the Southeast, and Madison Counties to the North, respectively. Surficial and subsurface bedrock point data and maps were compiled from publicly available sources, vetted, and organized into a comprehensive geospatial database. A technical workflow was developed to categorize the overall geology and differentiate between the underlying bedrock and overlying unconsolidated sediments. The resulting bedrock elevation map provides a detailed representation of bedrock topography across Chenango County. This map is useful for various applications, including geological studies, engineering and construction, natural resource management (such as water or mineral resources), and environmental studies.

### Methodology

A total of 2,912 bedrock control points were used to delineate bedrock topography in Chenango County. These points consisted of 2,423 water wells, 36 thruway engineering boreholes, and 453 bedrock outcrops. These data were compiled from a variety of public sources and imported into ESRI's or ArcGIS Pro 3.3.1 software platform. Ground surface elevations for all control points were extracted from a compilation of three separate digital elevation models (DEM) which were resampled to match a 1-meter LIDAR DEM cell size. Bedrock elevations were calculated at each location by subtracting the depth-to-bedrock from the ground surface elevation. 50-foot bedrock elevation contours were auto-generated and manually refined through a multi-step quality control process to resolve any interpolation errors. The finalized contours were converted into a 1-meter raster, using the "Topo to Raster" tool, that represents county-wide bedrock topography. Lastly, the "Raster Calculator" tool is used to subtract the surface elevation from the bedrock elevation to determine the thickness of the drift in the county.

### Summary

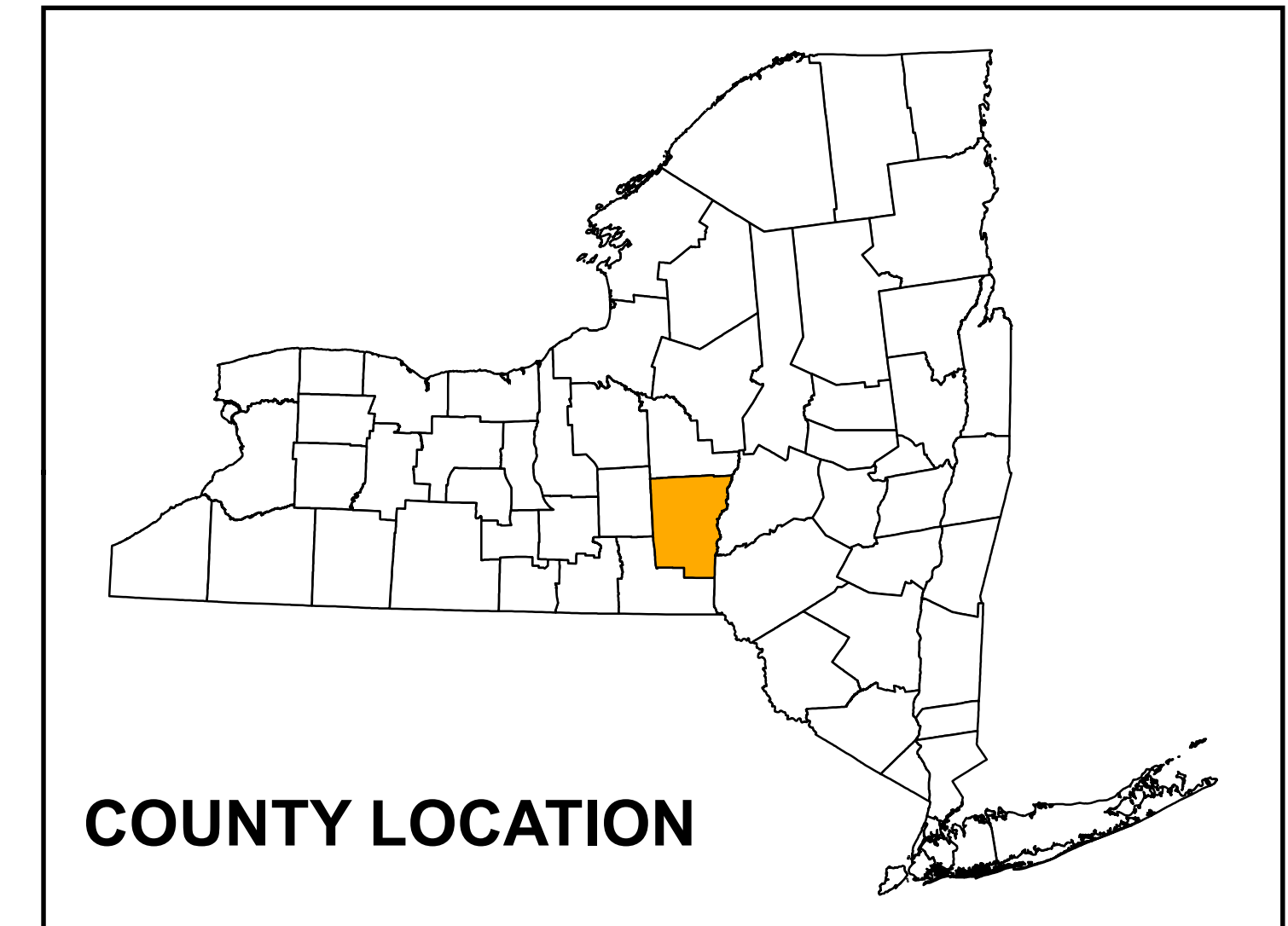
The New York State Museum - Geological Survey has developed a detailed Drift Thickness Map for Chenango County. This map represents a compilation of various surficial and subsurface bedrock data sources, analytical methods, and quality control procedures. The resulting bedrock elevations reveal a range of distinct geological features including a variety of Paleozoic bedrock erosional profiles, and evidence of past glaciation. These characteristics are likely the result of a variety of functions including bedrock stratigraphy, structural deformation, and erosional processes such as past glaciation and fluvial geomorphology. This map is significant for applications in geological research, engineering, natural resource management, and environmental studies. Continued research and work on subsurface geology will provide additional data and insight and enhance the geologic framework of bedrock geology throughout New York State.

### Explanation

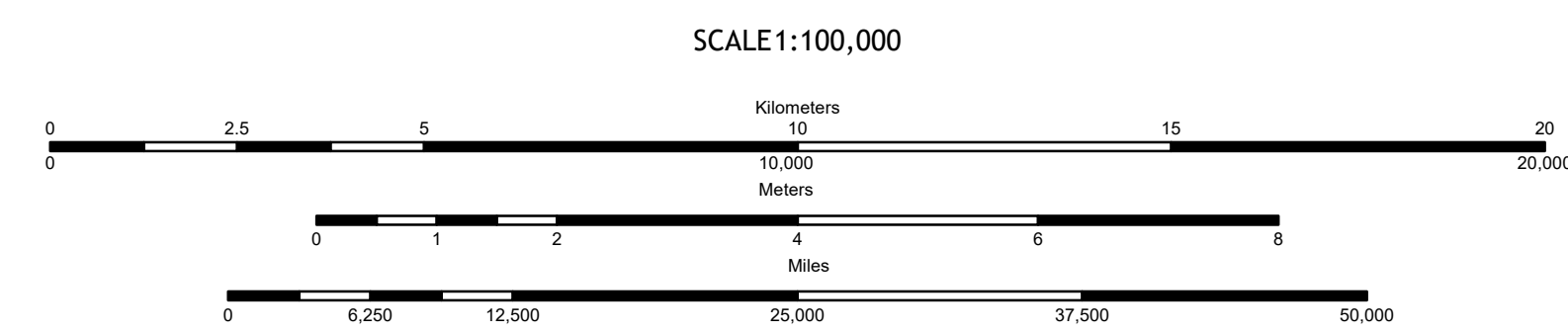
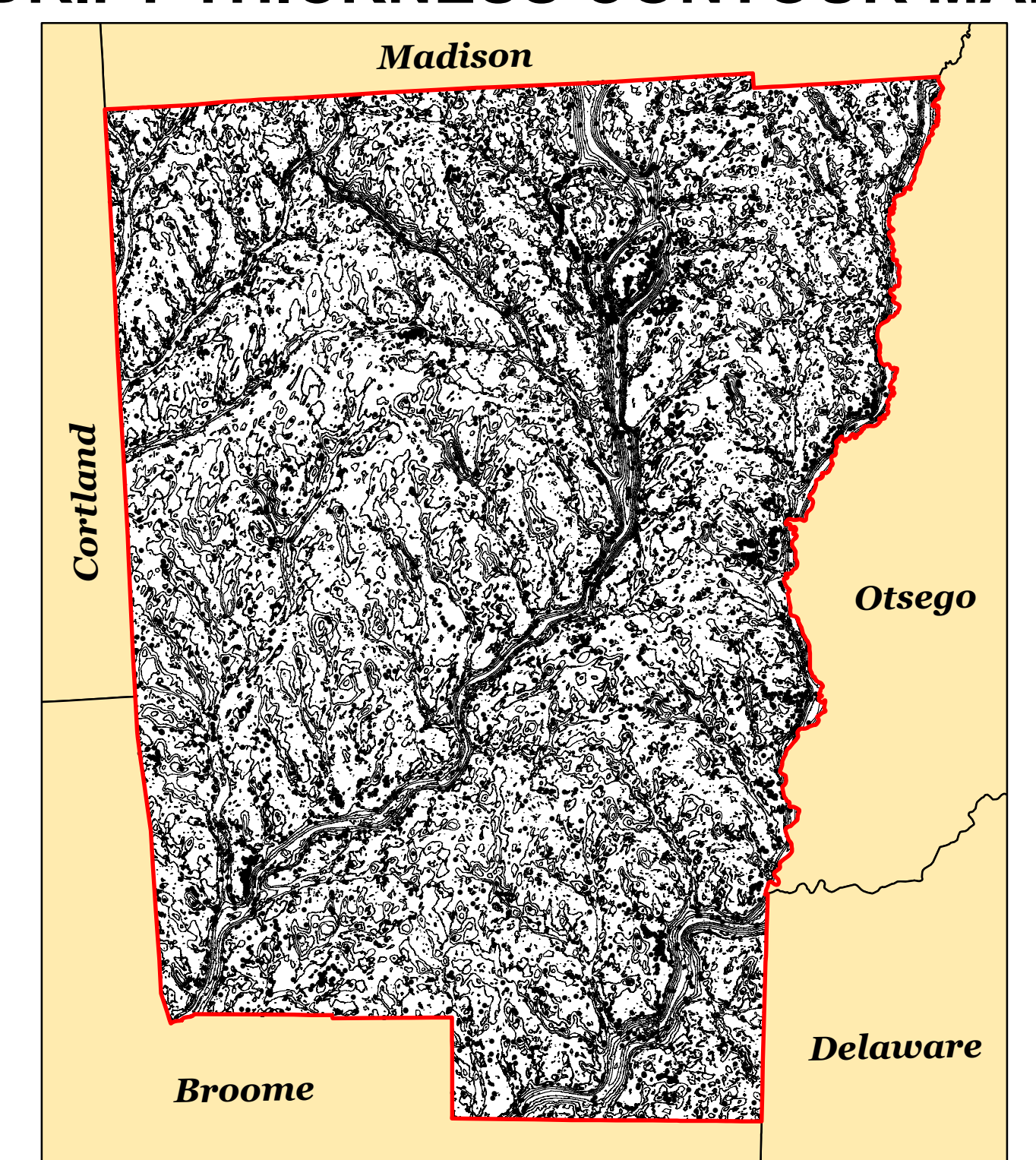
- Data Point
- 50ft Drift Thickness Contour
- 100ft Drift Thickness Contour
- Highway
- Chenango County Line
- Adjacent County

### Drift Thickness

- Feet Thick**
- 0 - 10
  - 10 - 20
  - 20 - 30
  - 30 - 40
  - 40 - 50
  - 50 - 60
  - 60 - 70
  - 70 - 80
  - 80 - 90
  - 90 - 100
  - 100 - 200
  - 200 - 300
  - 300 - 400
  - 400 - 500



### DRIFT THICKNESS CONTOUR MAP



NOTICE  
This product was developed as part of the USGS National Cooperative Geologic Mapping Program (NCGMP) award number G20AC00418. The views and conclusions contained in this document are those of the authors and should not be interpreted as necessarily representing the official policies, either expressed or implied, of the USGS.  
While every effort has been made to ensure the integrity of this digital map and the factual data upon which it is based, the New York State Education Department (NYSED) assumes no liability for damages resulting from the use of any information, product, or service contained in this map and data and does not warrant the accuracy, completeness, or timeliness of the information contained herein. Any use of this product or data is at the user's discretion and is not intended to be used for any purpose other than that intended by NYSED.

