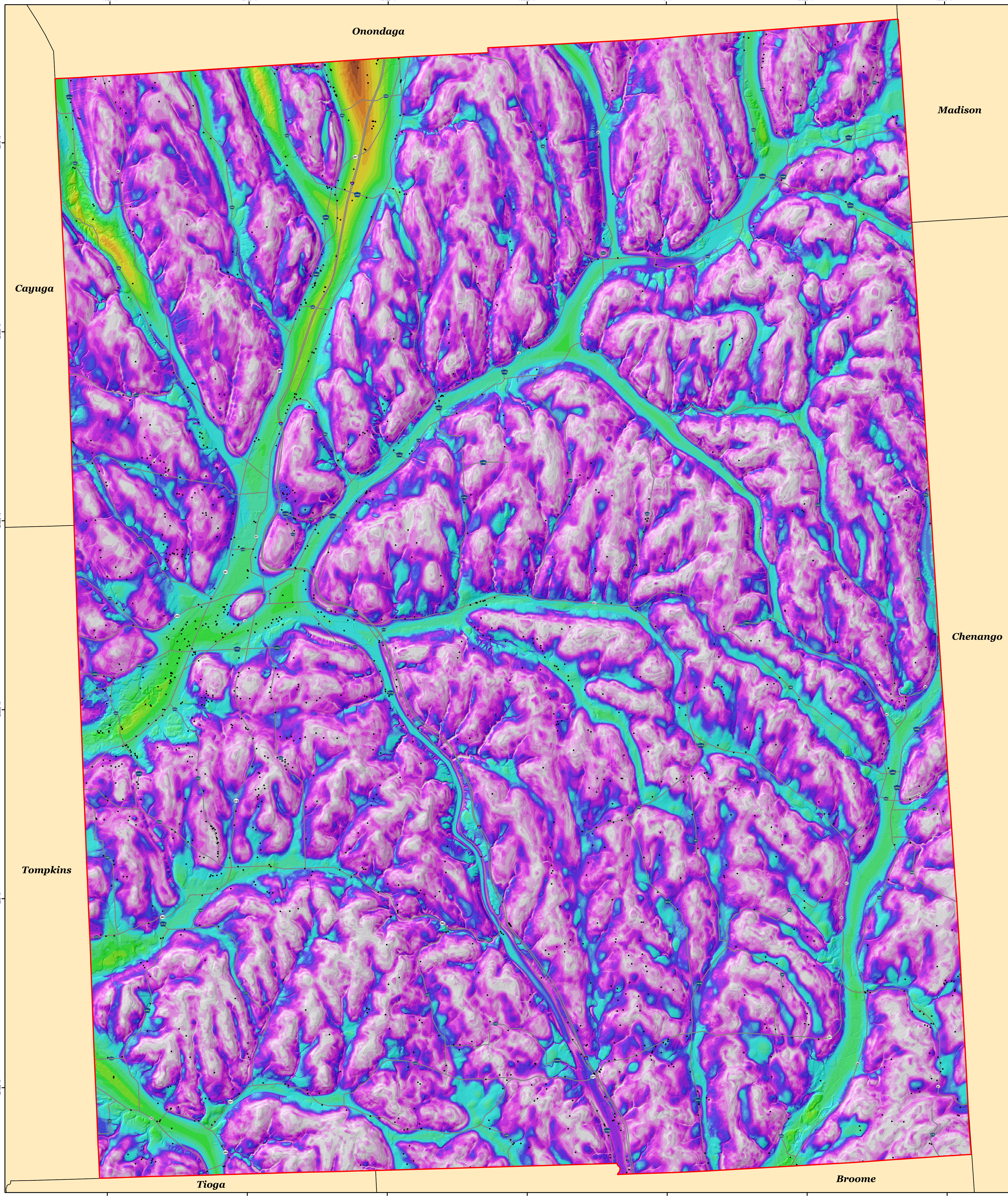


DRIFT THICKNESS OF CORTLAND COUNTY, NEW YORK

Emily J. McLean and Sean P. Grasing

2026



Introduction

Beginning in 2019, under the guidance and funding provided by the United States Geological Survey - GSTATEMAP award number G20AC00418, the New York State Museum - Geological Survey began a statewide effort to conduct geologic mapping of bedrock elevations throughout New York. Cortland County, of Western New York, located in the Allegheny Plateau physiographic province. The county is nestled between Tompkins, and Chenango counties. Cortland County is also located along two large bodies of water, Lake Ontario and Oneida Lake. Surficial and subsurface bedrock point data and maps were compiled from publicly available sources, vetted, and organized into a comprehensive geospatial database. A technical workflow was developed to categorize the overall geology and differentiate between the underlying bedrock and overlying unconsolidated sediments. The resulting bedrock elevation map provides a detailed representation of bedrock topography across Cortland County. This map is useful for various applications, including geological studies, engineering and construction, natural resource management (such as water or mineral resources), and environmental studies.

Methodology

A total of 1,572 bedrock control points were used to delineate bedrock topography in Cortland County. These points consisted of 1,533 water wells, 27 bedrock outcrops, and 12 engineering boreholes. These data were compiled from a variety of public sources and imported into ESRI's ArcGIS Pro 3.3.1 software platform. Ground surface elevations for all control points were extracted from a compilation of three separate digital elevation models (DEM) which were resampled to match a 1-meter LIDAR DEM cell size. Bedrock elevations were calculated at each location by subtracting the depth-to-bedrock from the ground surface elevation. 50-foot bedrock elevation contours were auto-generated and manually refined through a multi-step quality control process to resolve any interpolation errors. The finalized contours were converted into a 1-meter raster, using the "Topo to Raster" tool, that represents county-wide bedrock topography. Lastly, the "Raster Calculator" tool is used to subtract the surface elevation from the bedrock elevation to determine the thickness of the drift in the county.

Explanation

- Data Point
- 50ft Drift Thickness Contour
- 100ft Drift Thickness Contour
- Highway
- Cortland County Line
- Adjacent County

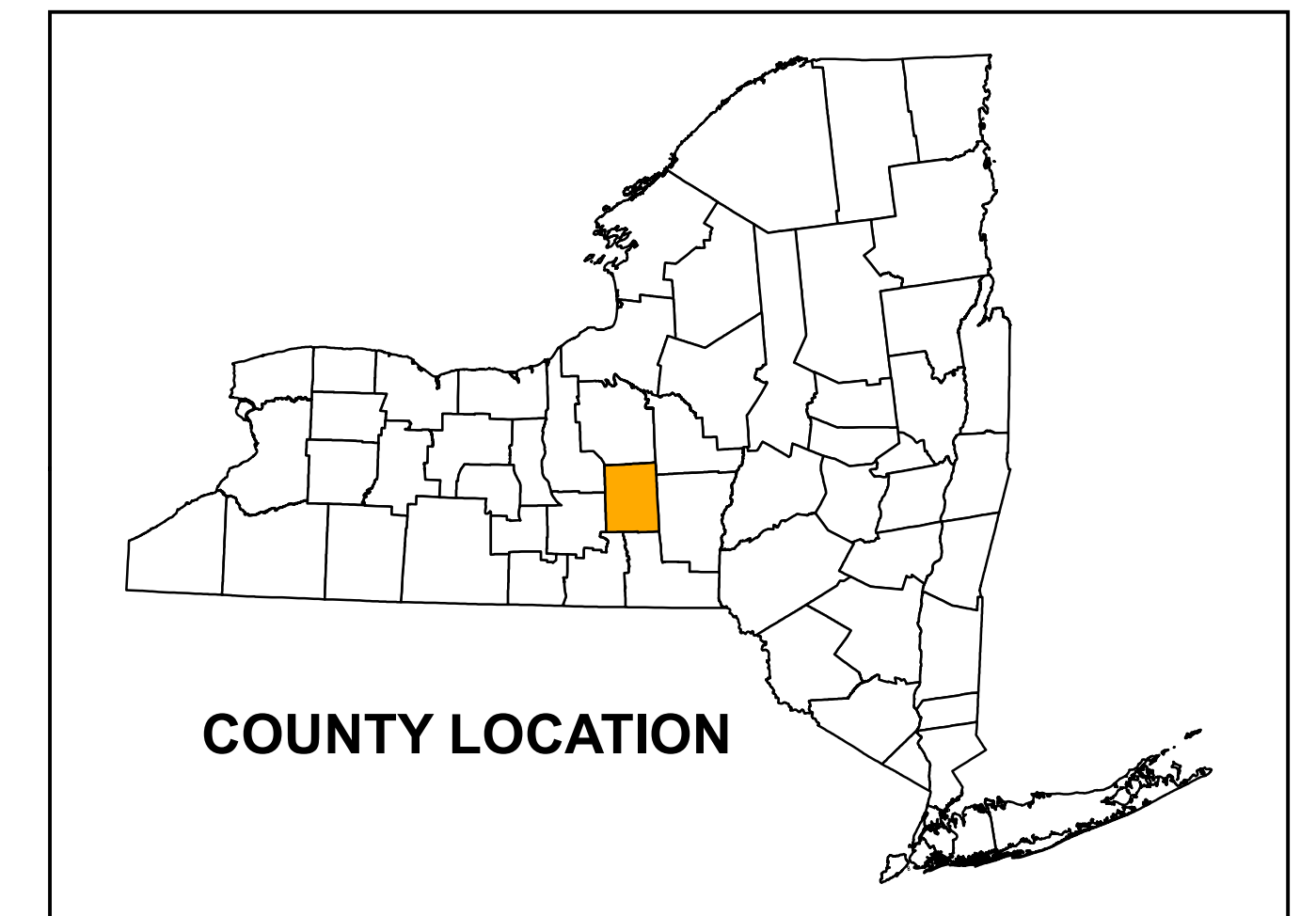
Summary

The New York State Museum - Geological Survey has developed a detailed Bedrock Topography Map for Cortland County. This map represents a compilation of various surficial and subsurface bedrock data sources, analytical methods, and quality control procedures. The resulting bedrock elevations reveal a range of distinct geological features including a variety of Paleozoic bedrock erosional profiles, and evidence of past glaciation. These characteristics are likely the result of a variety of functions including bedrock stratigraphy, structural deformation, and erosional processes such as past glaciation and fluvial geomorphology. This map is significant for applications in geological research, engineering, natural resource management, and environmental studies. Continued research and work on subsurface geology will provide additional data and insight and enhance the geologic framework of bedrock geology throughout New York State.

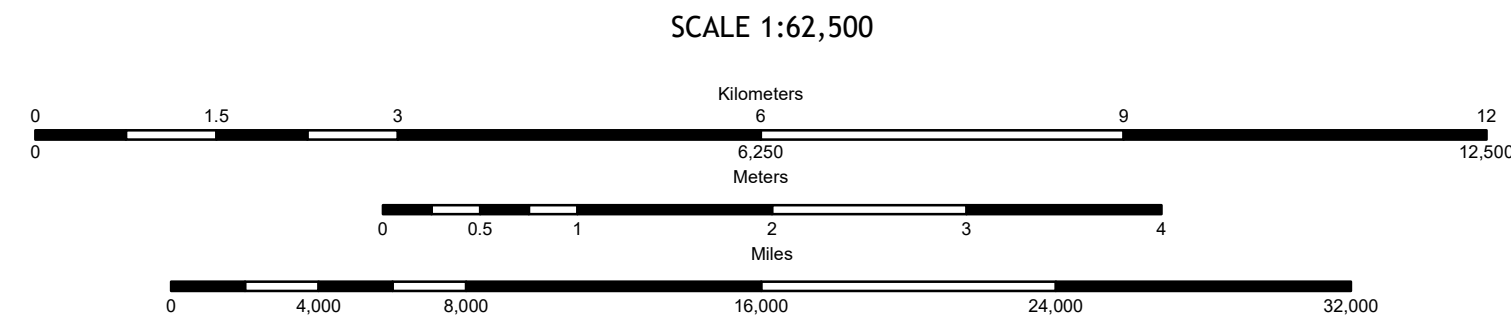
Drift Thickness

Feet Thick

- 0 - 10
- 10 - 20
- 20 - 30
- 30 - 40
- 40 - 50
- 50 - 60
- 60 - 70
- 70 - 80
- 80 - 90
- 90 - 100
- 100 - 150
- 150 - 200
- 200 - 250
- 250 - 300
- 300 - 350
- 350 - 400
- 400 - 450
- 450 - 500
- 500 - 550
- 550 - 600
- 600 - 650
- 650 - 700
- 700 - 750
- 750 - 800



DRIFT THICKNESS CONTOUR MAP



NOTICE
This product was developed in part by the 2023 National Cooperative Geologic Mapping Program (NCGMP) award number G20AC00418. The names and locations appearing on this document are those of the authors and should not be interpreted as necessarily endorsing the official position, either personal or official, of the U.S. Government.
While every effort has been made to ensure the integrity of this digital map and the related data upon which it is based, the New York State Education Department (NYSED) disclaims any liability for damages resulting from the use of any information, including, but not limited to, the map and data, and does not warrant the accuracy, reliability, or completeness of the information. Any use of this product on the internet or for distribution purposes may constitute a copyright infringement by NYSED.

