

**BEDROCK GEOLOGY OF THE PAGE 7.5-MINUTE QUADRANGLE,
LEWIS COUNTY, NEW YORK**

prepared by
Karl J. Backhaus and Richard A. Frieman

Supported in part by the U.S Geological Survey's
National Cooperative Geologic Mapping Program STATEMAP Award Number G22AC00366

DESCRIPTION OF MAP UNITS

Late Ordovician

Ungrouped Formations

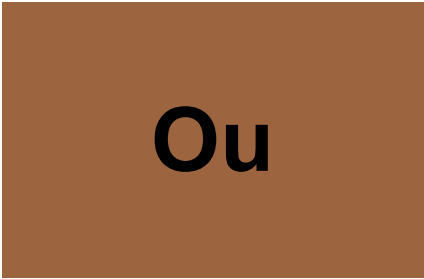


Oswego Formation
Massive, grey, fine-grained quartz sandstone with few thin shale partings. Some cross-bedding. Up to 35m thick. Fossils absent. Interpreted to have been deposited in a high-energy, nearshore environment.

Lorraine Group

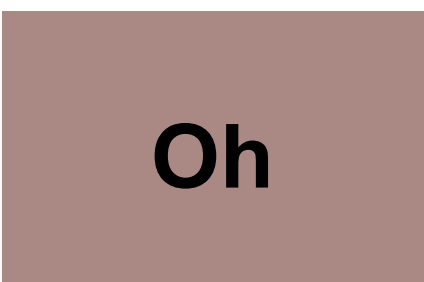


Whetstone Gulf Formation
Dark grey to black shale with minor fine sand laminations. Coarsens upwards. Up to 65m thick. Few fossils. Interpreted as the gradational shallowing from the deep water deposition of the Utica Shale.



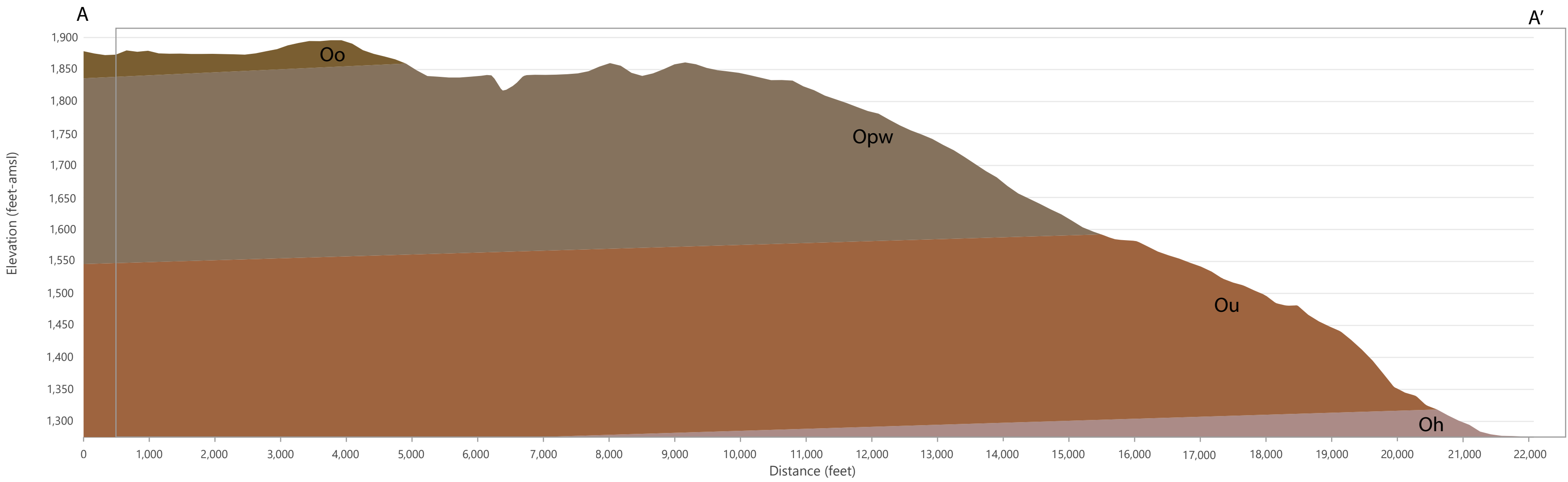
Utica Shale Formation
Black to grey, fissile to massive, shales and calcareous mudstone. Up to 230m thick. Graptolites common. Deposited in the quiescent depths of an anoxic to euxinic basin.

Trenton Group

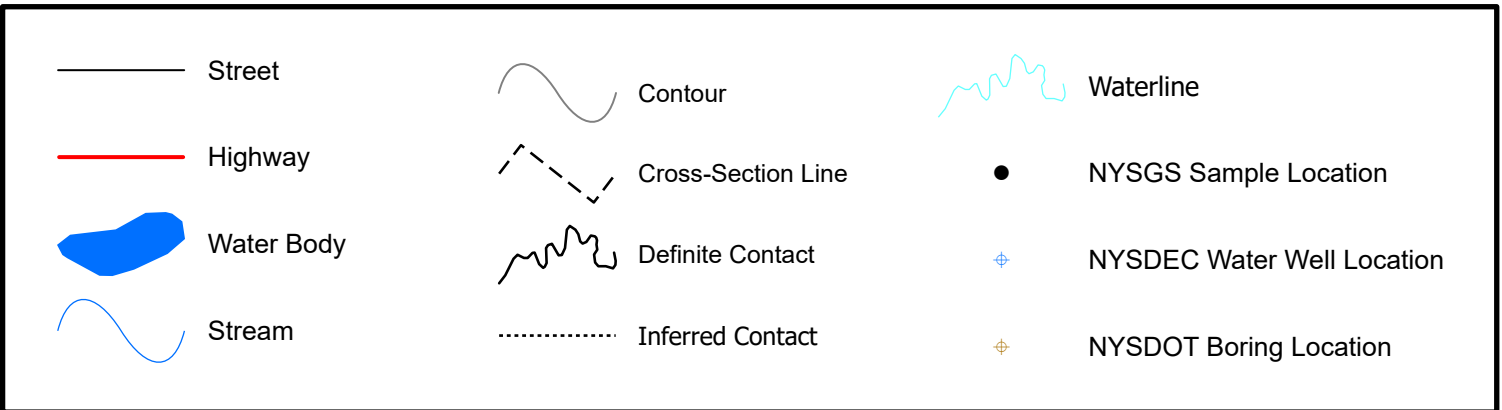


Hillier Limestone
Wavy-bedded argillaceous calcarenite and nodular wackestones with interbedded shales.

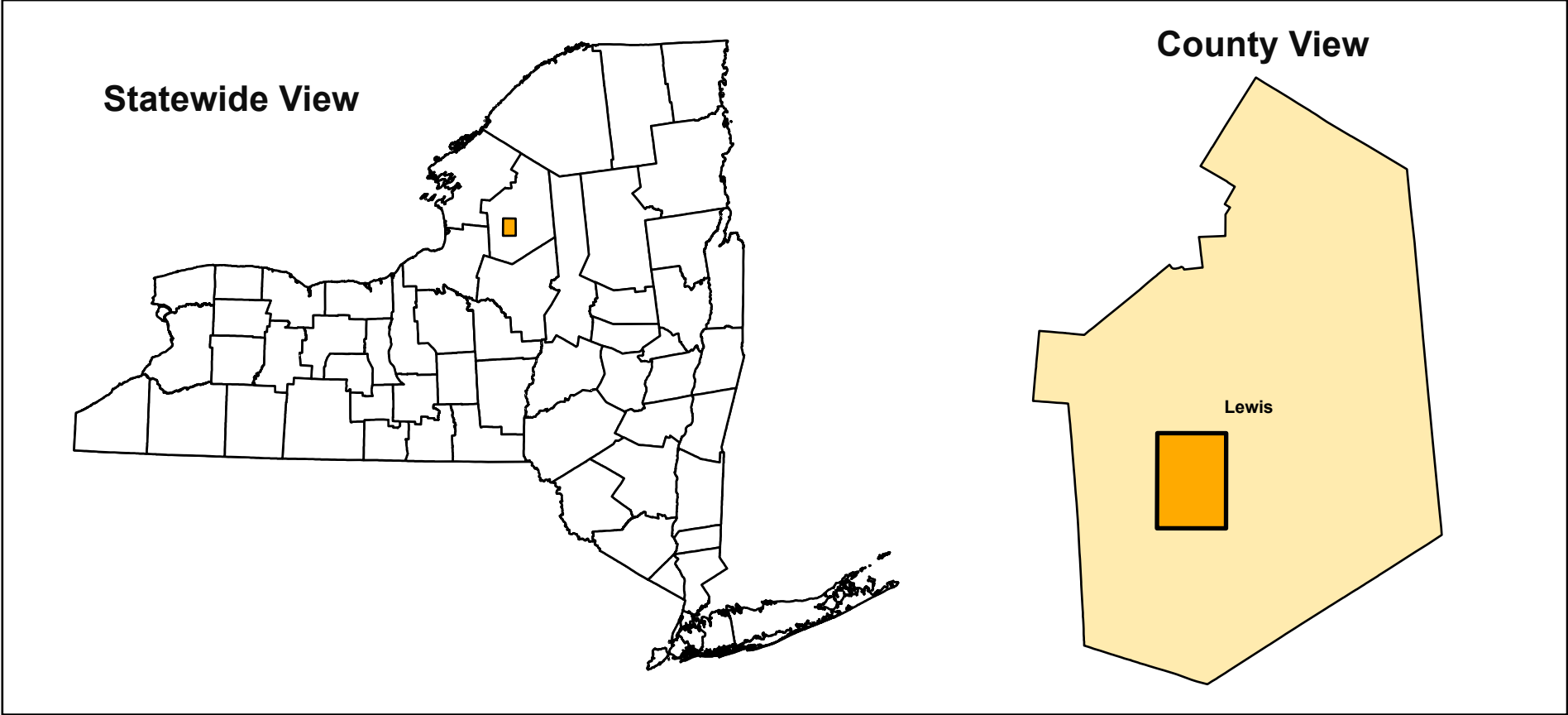
CROSS-SECTION A-A'



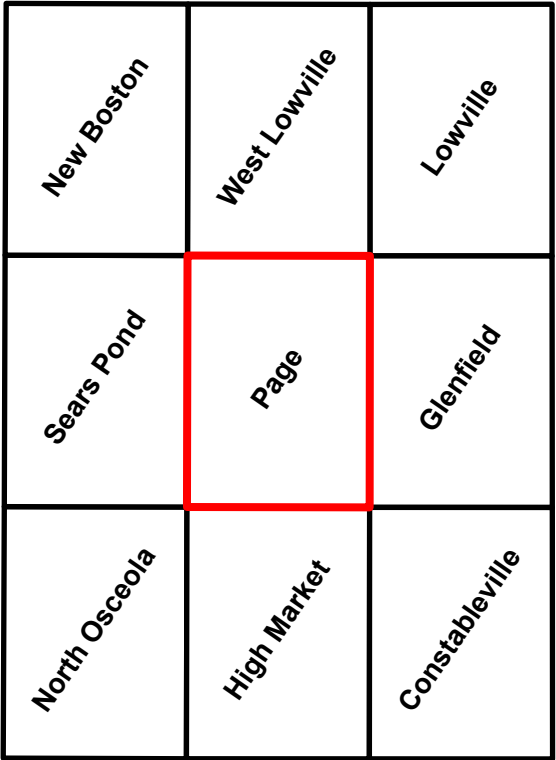
SYMBOLS



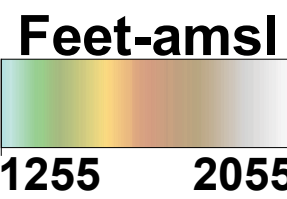
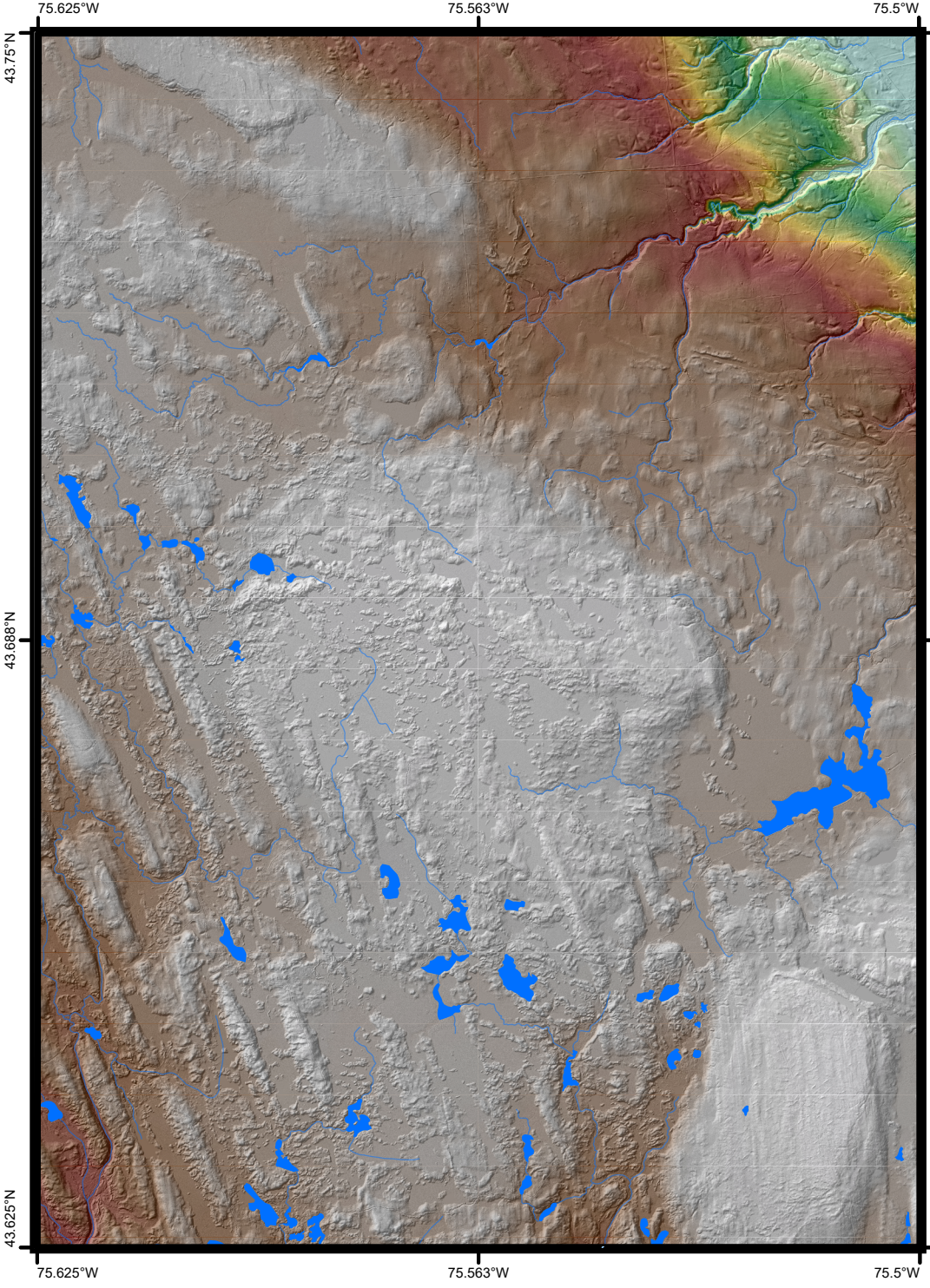
QUADRANGLE LOCATION



ADJOINING QUADRANGLES



QUADRANGLE ELEVATION



1:75,000 scale; 2x vertical exaggeration
Shaded relief generated from the 2019 FEMA and
2022 Lake Ontario/Hudson River 1m lidar data sets

**BEDROCK GEOLOGY OF THE PAGE 7.5-MINUTE QUADRANGLE,
LEWIS COUNTY, NEW YORK**

Richard A. Frieman
2024

NOTICE
This geologic map was funded in part by the USGS National Cooperative Geologic Mapping Program STATEMAP award number G22AC00366 in the year 2024.
The views and conclusions contained in this document are those of the authors and should not be interpreted as necessarily presenting the official policies, either expressed or implied, of the U.S. Government.
While every effort has been made to ensure the integrity of this digital map and the factual data upon which it is based, the New York State Education Department ("NYSED") makes no representation or warranty, expressed or implied, with respect to its accuracy, completeness, or usefulness for any particular purpose or scale. NYSED assumes no liability for damages resulting from the use of any information, apparatus, method, or process disclosed in this map and text, and urges independent site-specific verification of the information contained herein. Any use of trade, product, or firm names is for descriptive purposes only and does not imply endorsement by NYSED.