

SURFICIAL GEOLOGY OF THE ESPERANCE 7.5-MINUTE QUADRANGLE, MONTGOMERY, SCHENECTADY AND SCHOHARIE COUNTIES, NEW YORK

prepared by
Karl J. Backhaus and Andrew L. Kozlowski

Supported in part by the U.S Geological Survey's
National Cooperative Geologic Mapping Program Great Lakes Mapping Coalition Award Number G22AC00529

DESCRIPTION OF MAP UNITS

Holocene

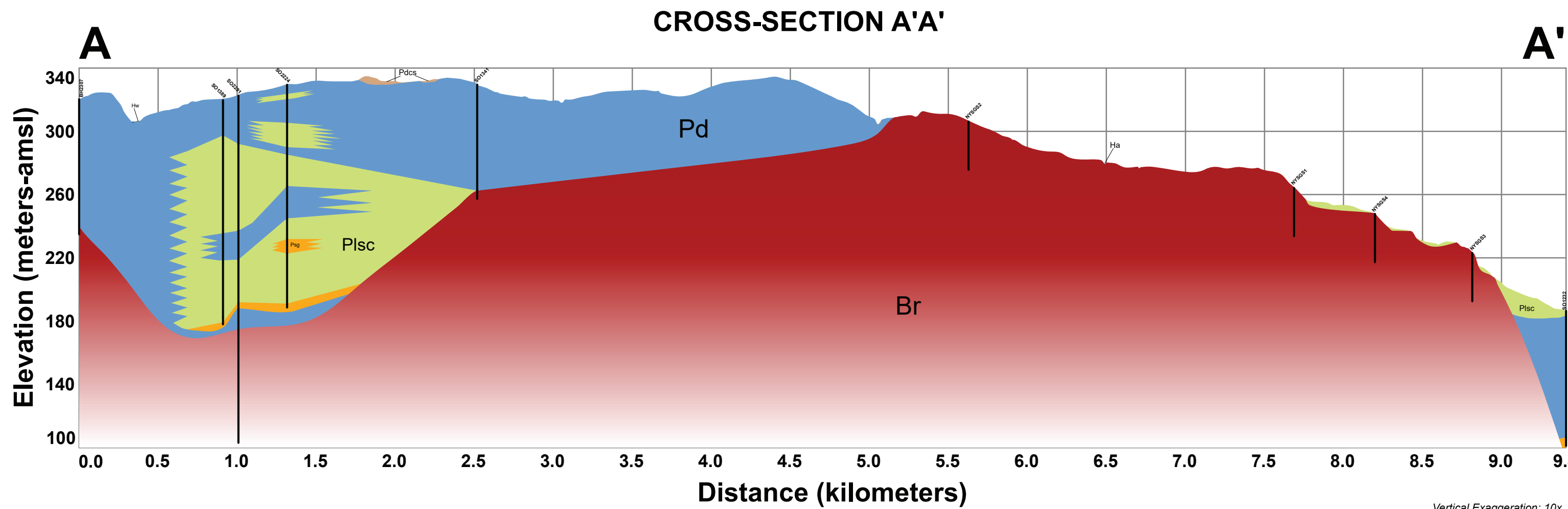
Af	Artificial Fill (Af) This unit is generally composed consists of coarse-/to-fine, materials such as large cement mounds and/or crushed rock , which have been transported anthropogenically transported and used for construction purposes.
Ha	Stratified silt, sand and gravel (Ha) Sorted and stratified silt, sand, and gravel, deposited by rivers and streams. May include cobbles and boulders. Inferred as post-glacial alluvium and includes modern channel, over-bank and fan deposits.
Hdc	Diamict Colluvium (Hdc) Unsorted and unstratified deposit of gravel, sand, silt, clay, with boulders/cobbles possible. Described as a mass-wasting deposit at the base of steep hillslopes and cliffs as part of a slump or hillslope failure.
Hw	Wetland Deposit (Hw) Peat, muck, marl, silt, clay or sand deposited in association with wetland environments. Various sediments can be present at transitional boundaries from one facies to another.

Pleistocene

Plsc	Silt and Clay (Plsc) Stratified, fine-grained sediment consisting of fine sand, silt and clay size particles. Inferred to be deposited in mid-shore to deepwater settings of glacial lakes. May include marl, rythmites, and varves.
Psg	Stratified sand and gravel (Psg) Well-sorted and stratified sand and gravel. May include cobbles and boulders. Inferred to be delta, fan or lag deposits in glacial channels or near former ice margins.
Pics	Cobbles to Sand (Pics) Stratified, ice contact deposits, variable coarse-grained sediment consisting of boulders to sand size particles. Inferred to be deposited along an ice margin. May include, interbedded coarse lenses of gravel and clast-supported diamicton (flow till).
Pd	Diamicton (Pd) An admixture of unsorted sediment ranging from clay to boulders. Generally matrix-supported, massive and clast-rich.
Pdcs	Diamicton (Pdcs) An admixture of unsorted sediment ranging from clay to boulders. Generally clast-supported, massive and clast-rich.

Pre-Pleistocene

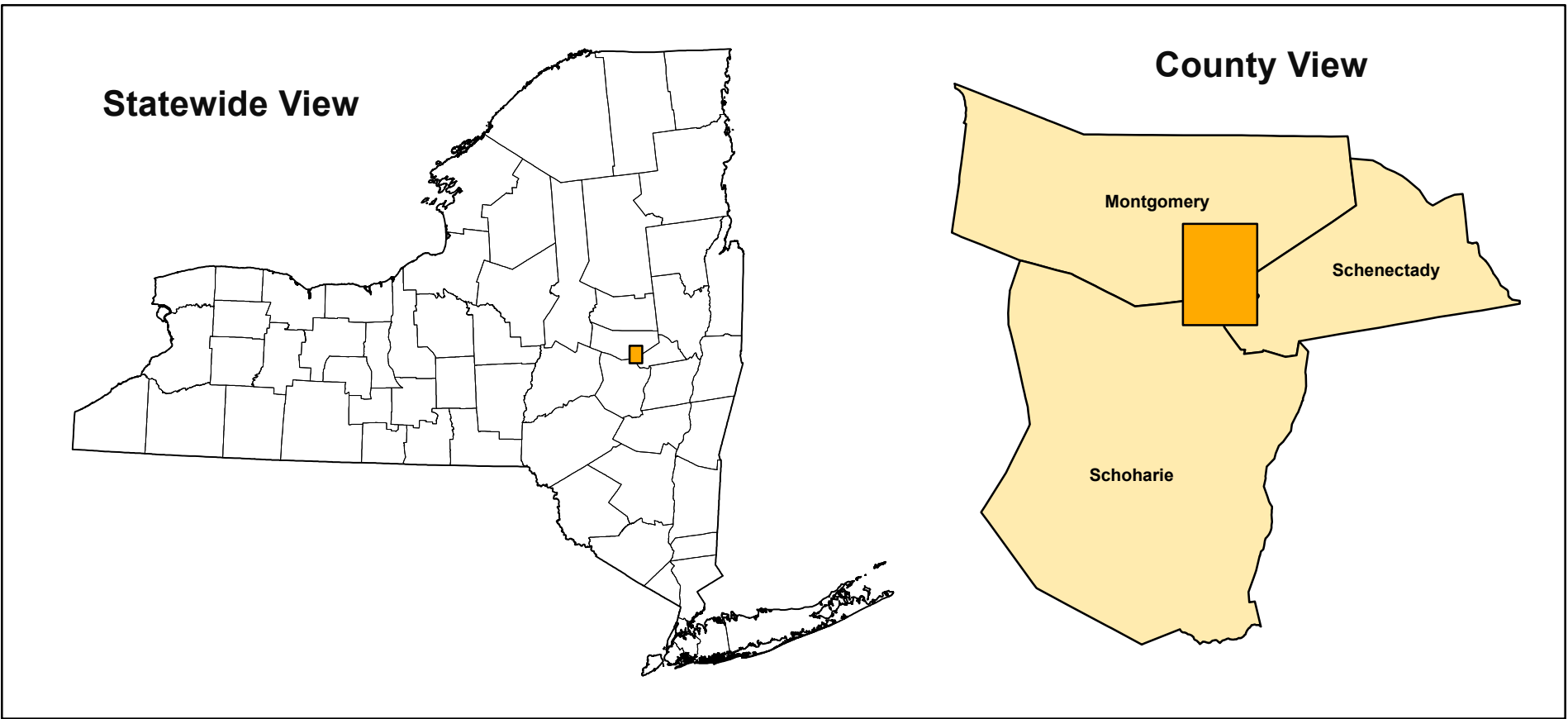
Br	Bedrock (Br) Non-glacially derived, hard rock, pre-pleistocene in age. May be covered up to a meter in diamicton, sand and gravel, or sand and clay in areas marked as Br.
-----------	--



SYMBOLS

Highways	Streams	NYSDOT Boring Location
Streets	Contours	NYSGS Borehole Location
Airport Runway	Cross-Section Line	Eskers
County Lines	NYSGS Borehole Location	Ice Margin
Water Bodies	NYSDOT Boring Location	Drumlins

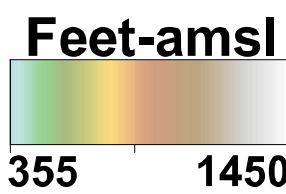
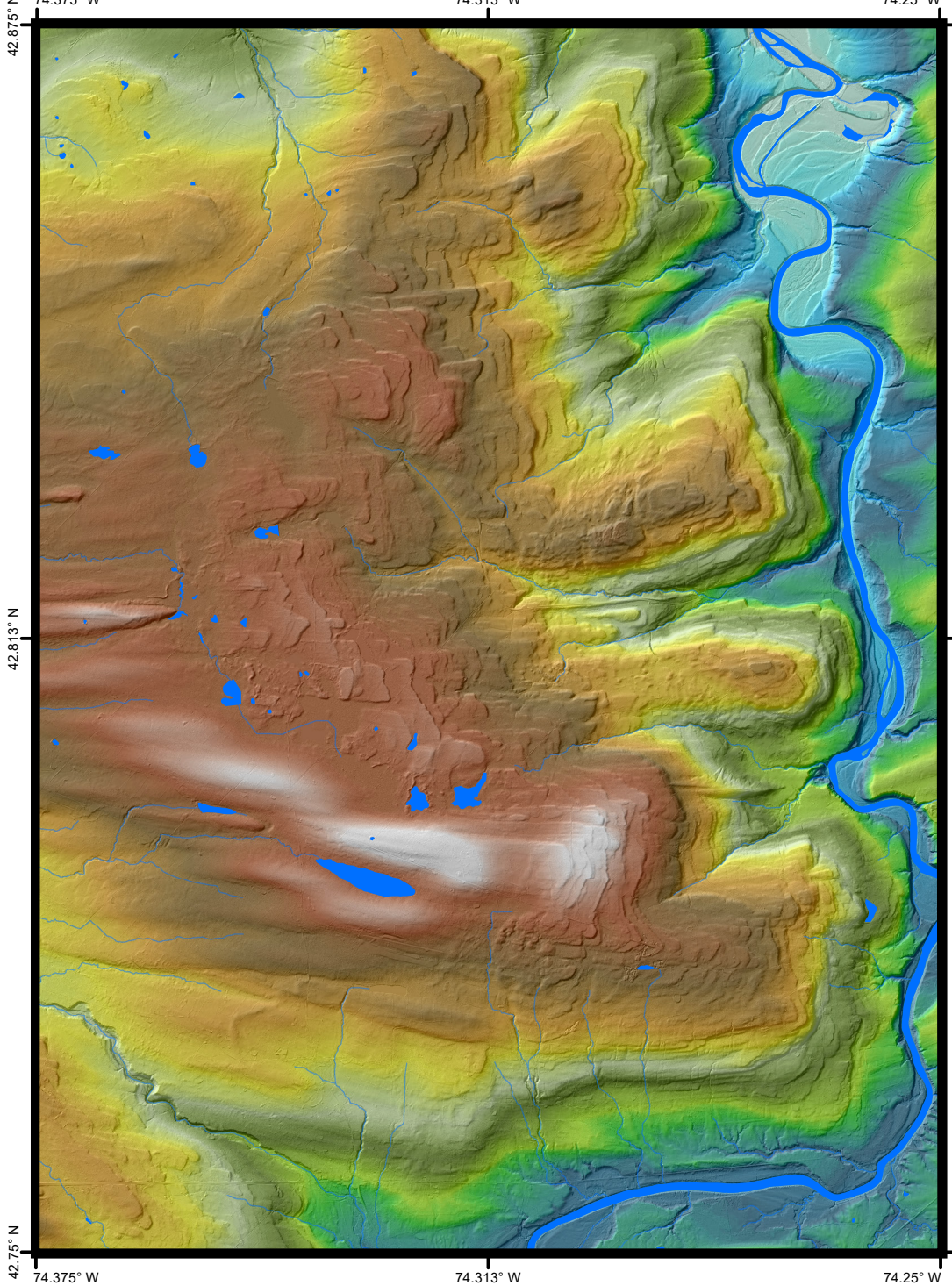
QUADRANGLE LOCATION



ADJOINING QUADRANGLES

Renhall	Three Hills	Anastadum
Cathlamet	Esperance	Duanesburg
Cobleskill	Schoharie	Gallupville

QUADRANGLE ELEVATION



1:75,000 scale; 2x vertical exaggeration
Shaded relief generated from 2014 Schoharie 1-meter lidar data set.

SURFICIAL GEOLOGY OF THE ESPERANCE 7.5-MINUTE QUADRANGLE, MONTGOMERY, SCHENECTADY AND SCHOHARIE COUNTIES, NEW YORK

Andrew L. Kozlowski, Karl J. Backhaus and Hailey M. Forgeng
2023

NOTICE
This geologic map was funded in part by the USGS National Cooperative Geologic Mapping Program Great Lakes Mapping Coalition award number G22AC00529 in the year 2023.
The views and conclusions contained in this document are those of the authors and should not be interpreted as necessarily presenting the official policies, either expressed or implied, of the U.S. Government.
While every effort has been made to ensure the integrity of this digital map and the factual data upon which it is based, the New York State Education Department ("NYSED") makes no representation or warranty, expressed or implied, with respect to its accuracy, completeness, or usefulness for any particular purpose or scale. NYSED assumes no liability for damages resulting from the use of any information, apparatus, method, or process disclosed in this map and text, and urges independent site-specific verification of the information contained herein. Any use of trade, product, or firm names is for descriptive purposes only and does not imply endorsement by NYSED.