

BEDROCK TOPOGRAPHY OF ORLEANS COUNTY, NEW YORK

Sean P. Grasing and Karl J. Backhaus

2023







Introduction

Beginning in 2019, under the guidance and funding provided by the United States Geological Survey - Great Lakes Geological Mapping Coalition (award G20AC00401), the New York State Museum - Geological Survey began a statewide effort to conduct geologic mapping of bedrock elevations throughout New York. Orleans County, of western New York, lies entirely in the Erie-Ontario Lowlands physiographic province. The county is surrounded by three adjacent counties: Genesee, Monroe and Niagara. Orleans County is bordered to the north by Lake Ontario. Surficial and subsurface bedrock point data and maps were compiled from publicly available sources, vetted, and organized into a comprehensive geospatial database. A technical workflow was developed to categorize the overall geology and differentiate between the underlying bedrock and overlying unconsolidated sediments. The resulting bedrock elevation map provides a detailed representation of bedrock topography across Orleans County. This map is useful for various applications, including geological studies, engineering and construction, natural resource management (such as water or mineral resources), and environmental studies.

Methodology

A total of 255 bedrock control points were used to delineate bedrock topography in Orleans County. These points consisted of 219 water wells, 20 engineering boreholes, 13 waterfall locations and three thruway engineering boreholes. These data were compiled from a variety of public sources and imported into ESRI's ArcMap 10.8 software platform. Ground surface elevations for all control points were extracted from a compilation of three separate digital elevation models (DEM) which were resampled to match a 1-meter LIDAR DEM cell size. Bedrock elevations were calculated at each location by subtracting the depth-to-bedrock from the ground surface elevation. 50-foot bedrock elevation contours were auto-generated and manually refined through a multi-step quality control process to resolve any interpolation errors. The finalized contours were converted into a 1-meter raster, using the "Topo to Raster" tool, that represents county-wide bedrock topography.

Explanation

- Data Point
-  50ft Bedrock Elevation Contour
-  100ft Bedrock Elevation Contour
-  Highway
-  County Line
-  Adjacent County
-  Water Body

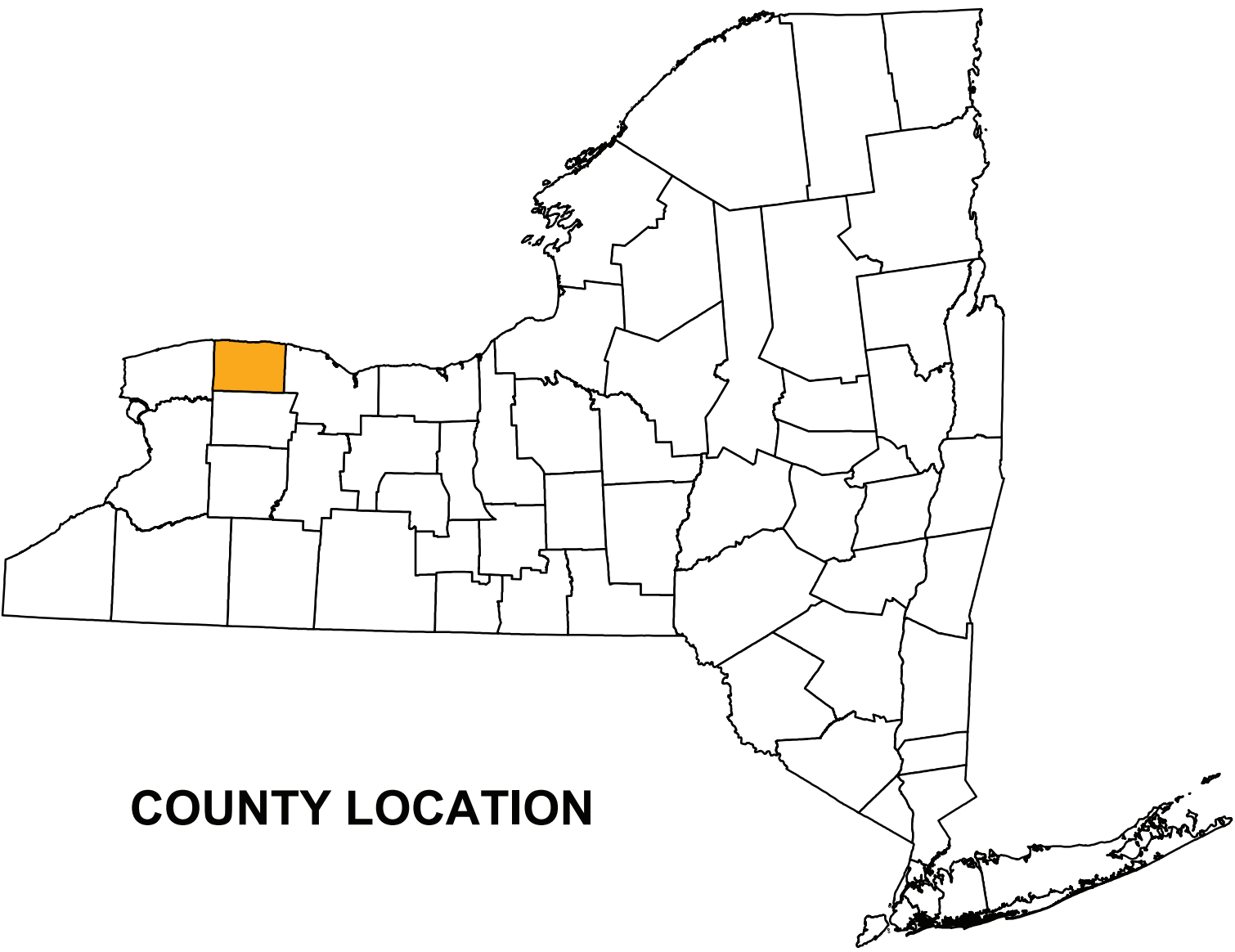
Bedrock Topography

Feet-amsl

- | | |
|--|-----------|
| | 150 - 200 |
| | 200 - 250 |
| | 250 - 300 |
| | 300 - 350 |
| | 350 - 400 |
| | 400 - 450 |
| | 450 - 500 |
| | 500 - 550 |
| | 550 - 600 |
| | 600 - 650 |
| | 650 - 700 |

Summary

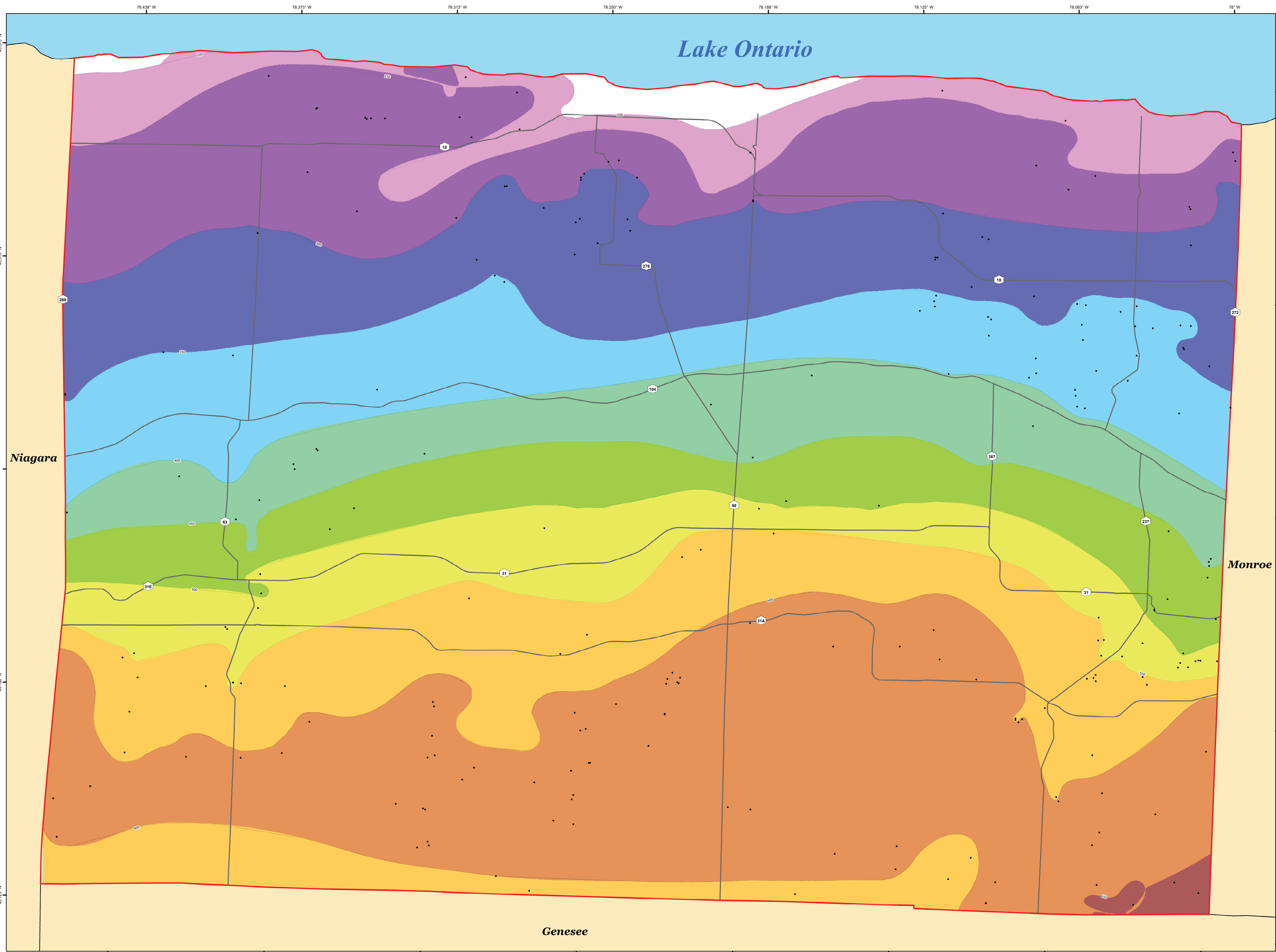
The New York State Museum – Geological Survey has developed a detailed Bedrock Topography Map for Orleans County. This map represents a compilation of various surficial and subsurface bedrock data sources, analytical methods, and quality control procedures. The resulting bedrock elevations reveal a range of distinct geological features including a variety of Paleozoic bedrock erosional profiles, and evidence of past glaciation. These characteristics are likely the result of a variety of functions including bedrock stratigraphy, structural deformation, and erosional processes such as past glaciation and fluvial geomorphology. This map is significant for applications in geological research, engineering, natural resource management, and environmental studies. Continued research and work on subsurface geology will provide additional data and insight and enhance the geologic framework of bedrock geology throughout New York State.



COUNTY LOCATION

New York State Museum Map & Chart No. 181

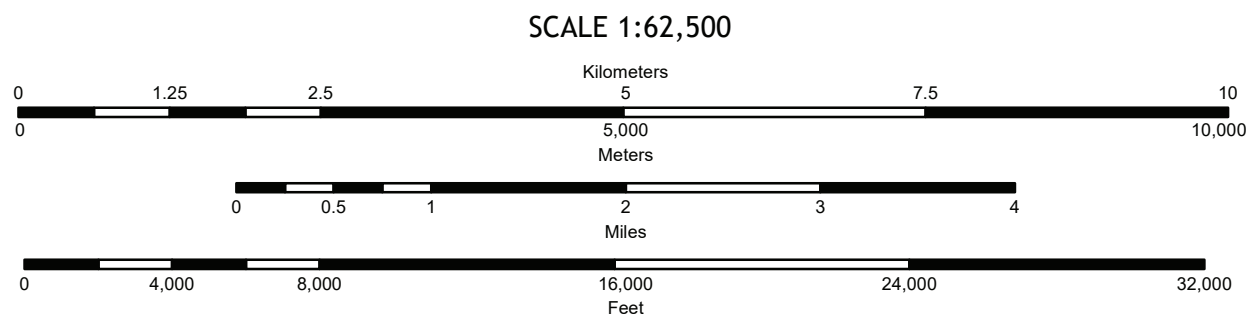
ISSN:0097-3793 ; ISBN:978-1-55557-435-2



Digital Data and Cartography by K. Backhaus and S. Grasing, 2022-23.

Universal Transverse Mercator, Zone 18 N North American Datum of 1983

Geographic and hydrography data obtained from the NYSGIS Clearinghouse (<https://gis.ny.gov/>)



NOTICE

This geologic map was funded in part by the USGS National Cooperative Geologic Mapping Program STATEMAP award number G26AC00048 in the year 2021.

The views and conclusions contained in this document are those of the authors and should not be interpreted as necessarily presenting the official policies, either expressed or implied, of the U.S. Government.

Wherever they have been made to ensure the integrity of the digital map and the factual data to which it is based, the New York State Education Department (NYSED) makes no representation or warranty, expressed or implied, with respect to its accuracy, completeness, or usefulness for any particular purpose or claim. The user assumes all liability for damages resulting from the use of any information, apparatus, method, or process disclosed in this map and any data, and accepts independent site-specific verification of the information contained herein. Any use of trade, product, or firm names is for descriptive purposes only and does not imply endorsement by NYSED.

