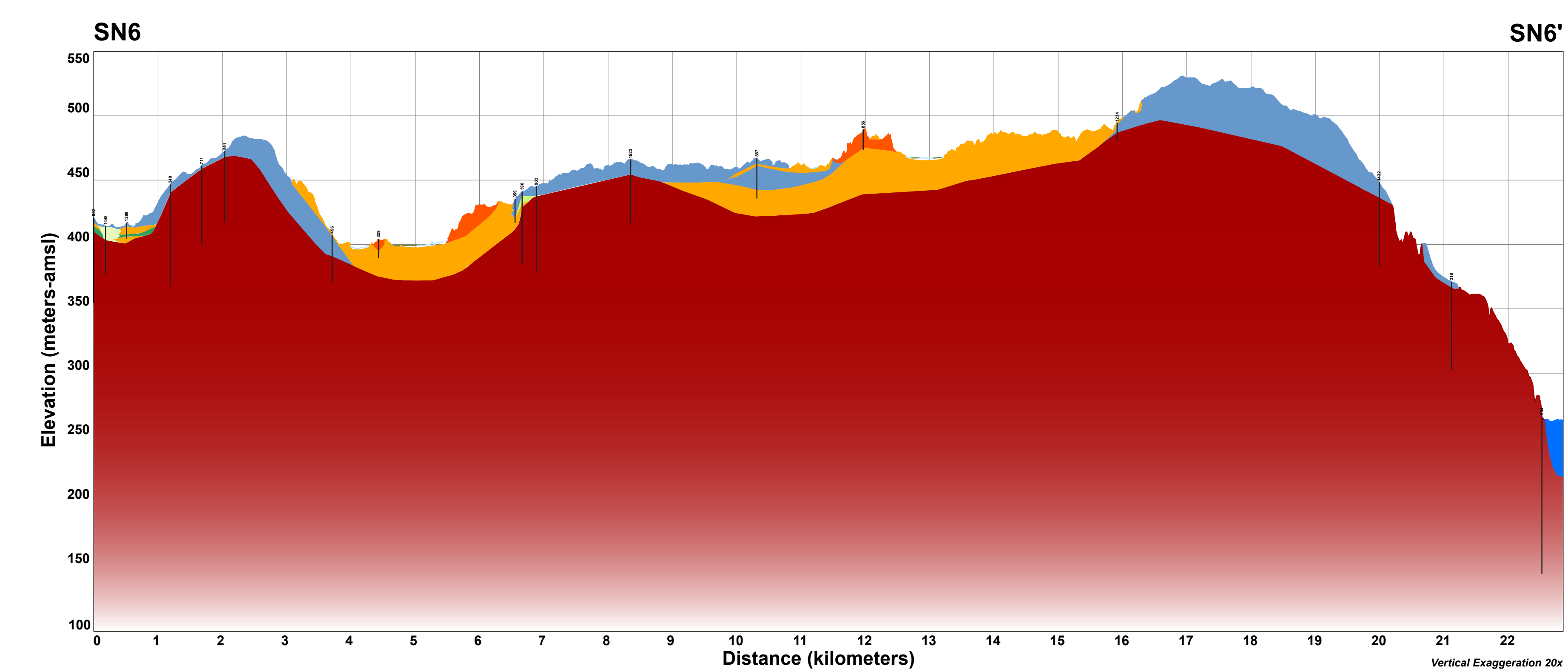
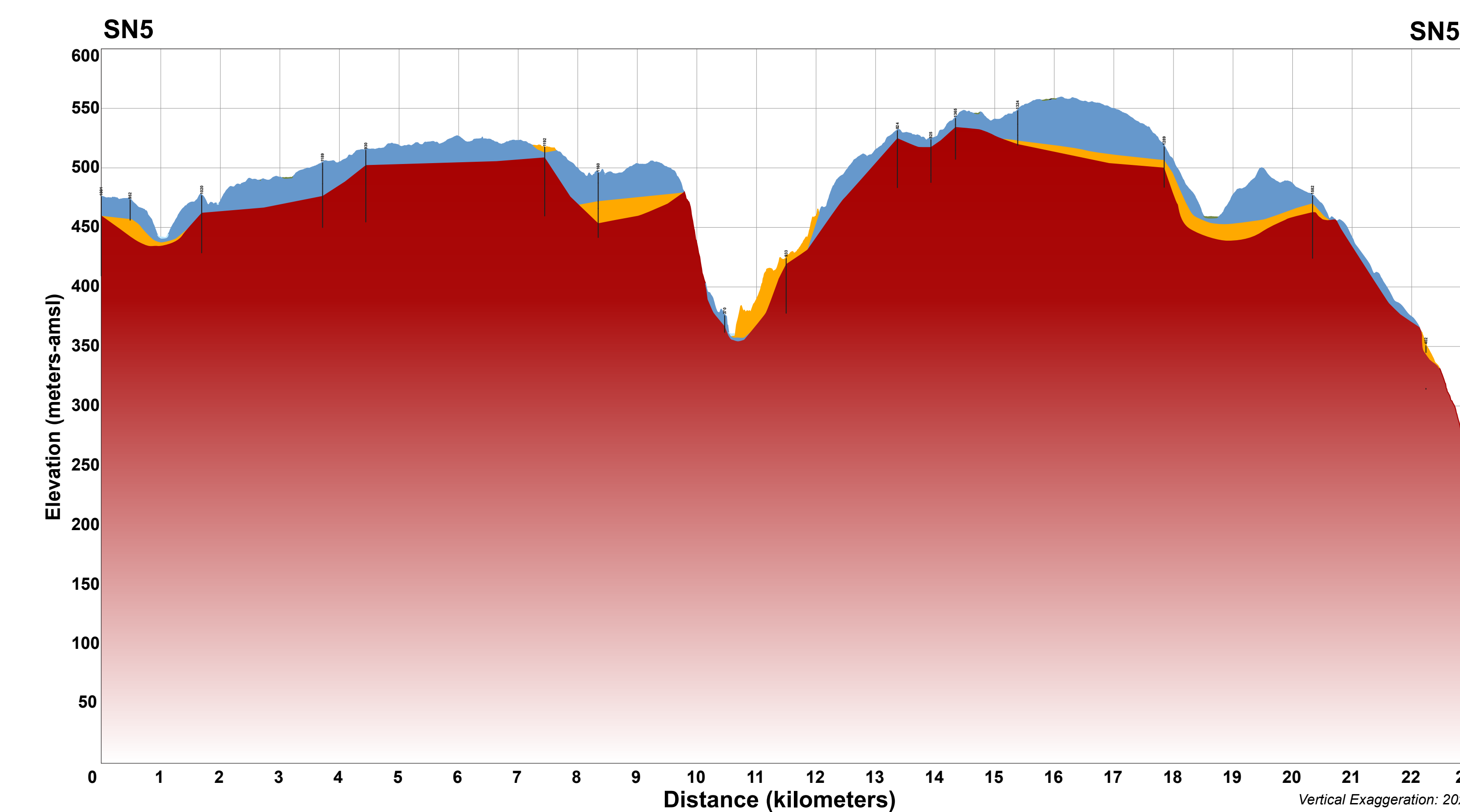
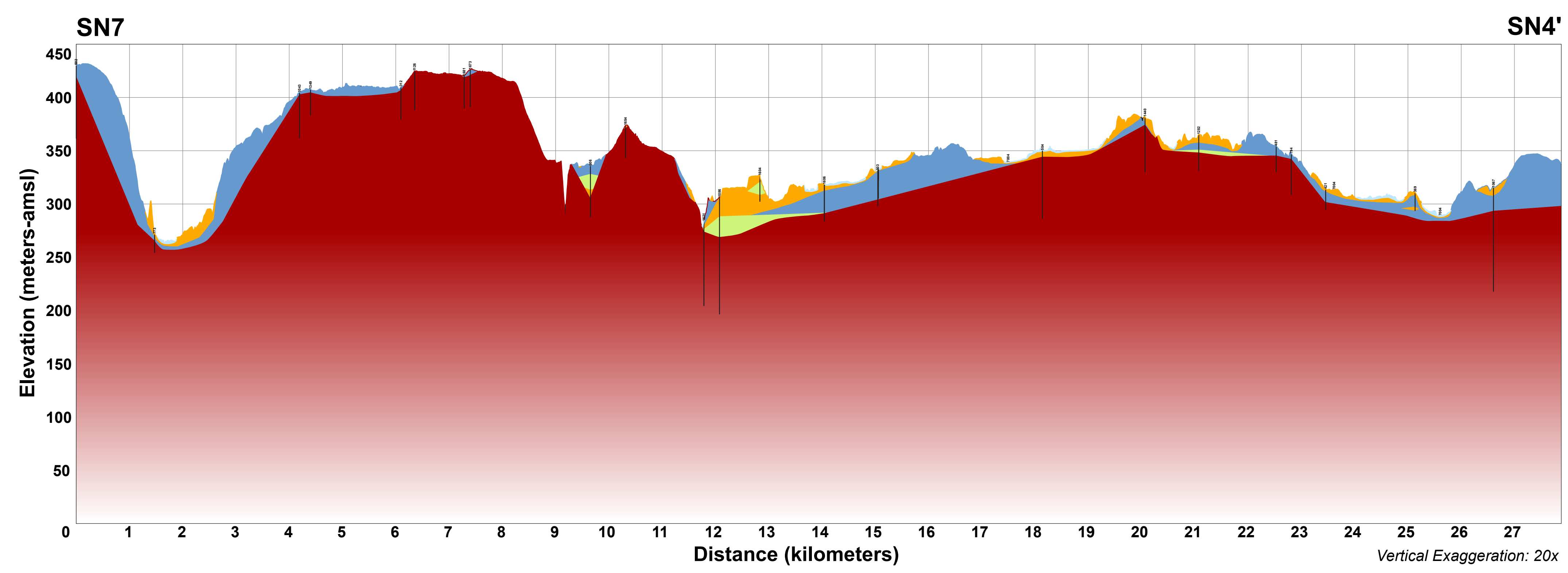
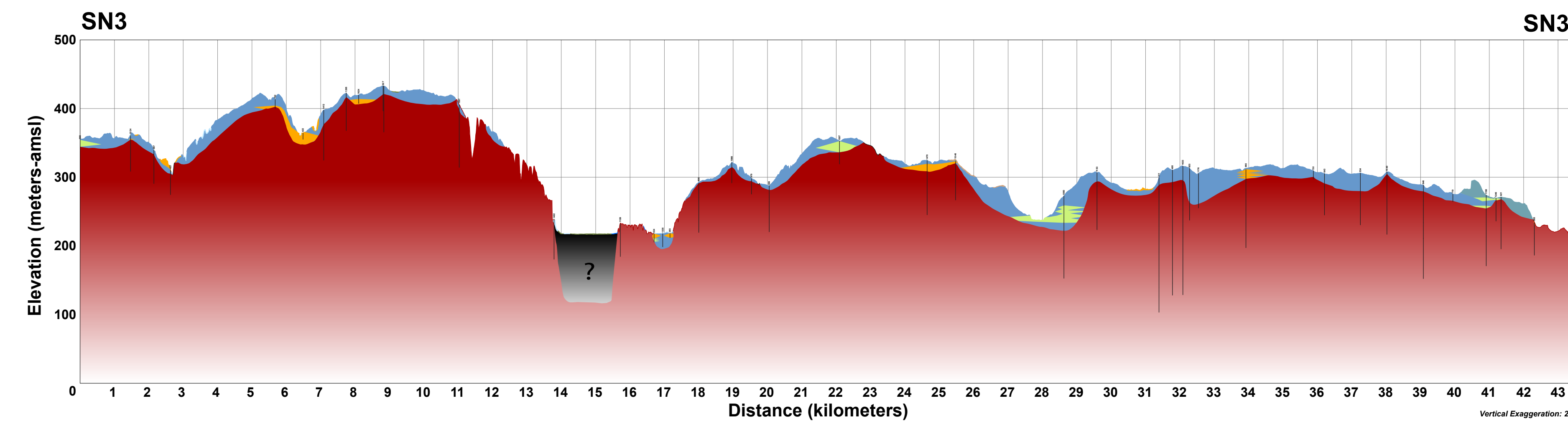
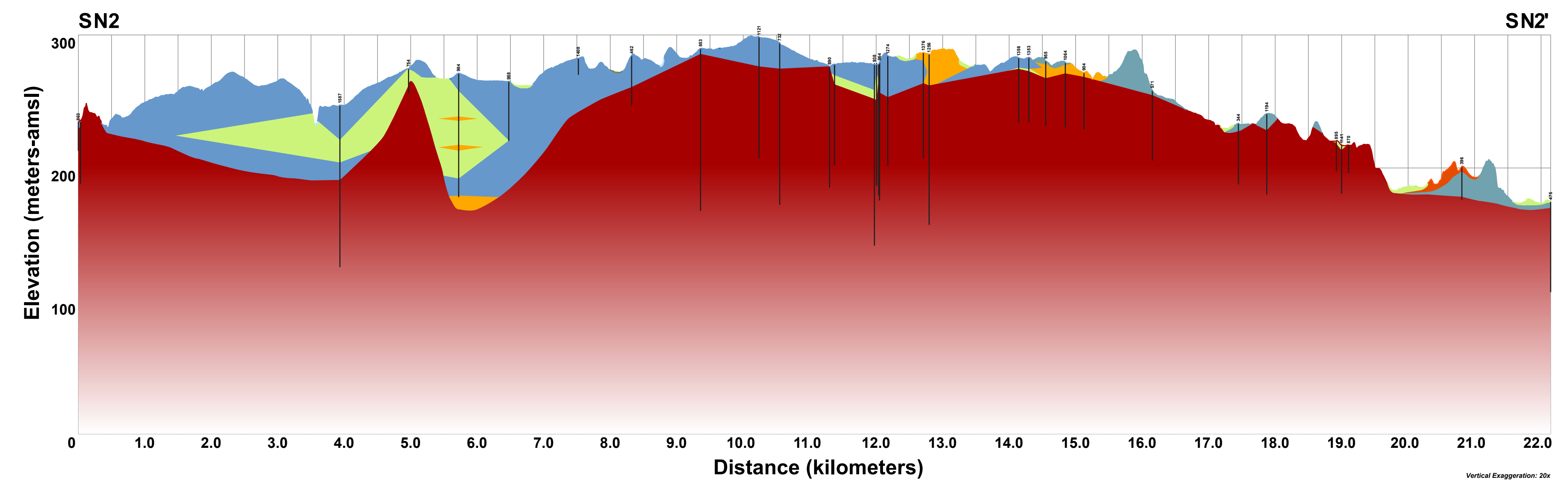
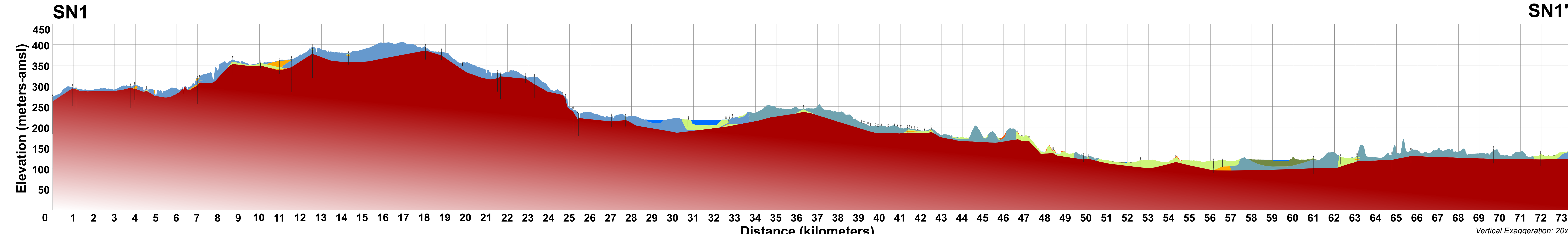
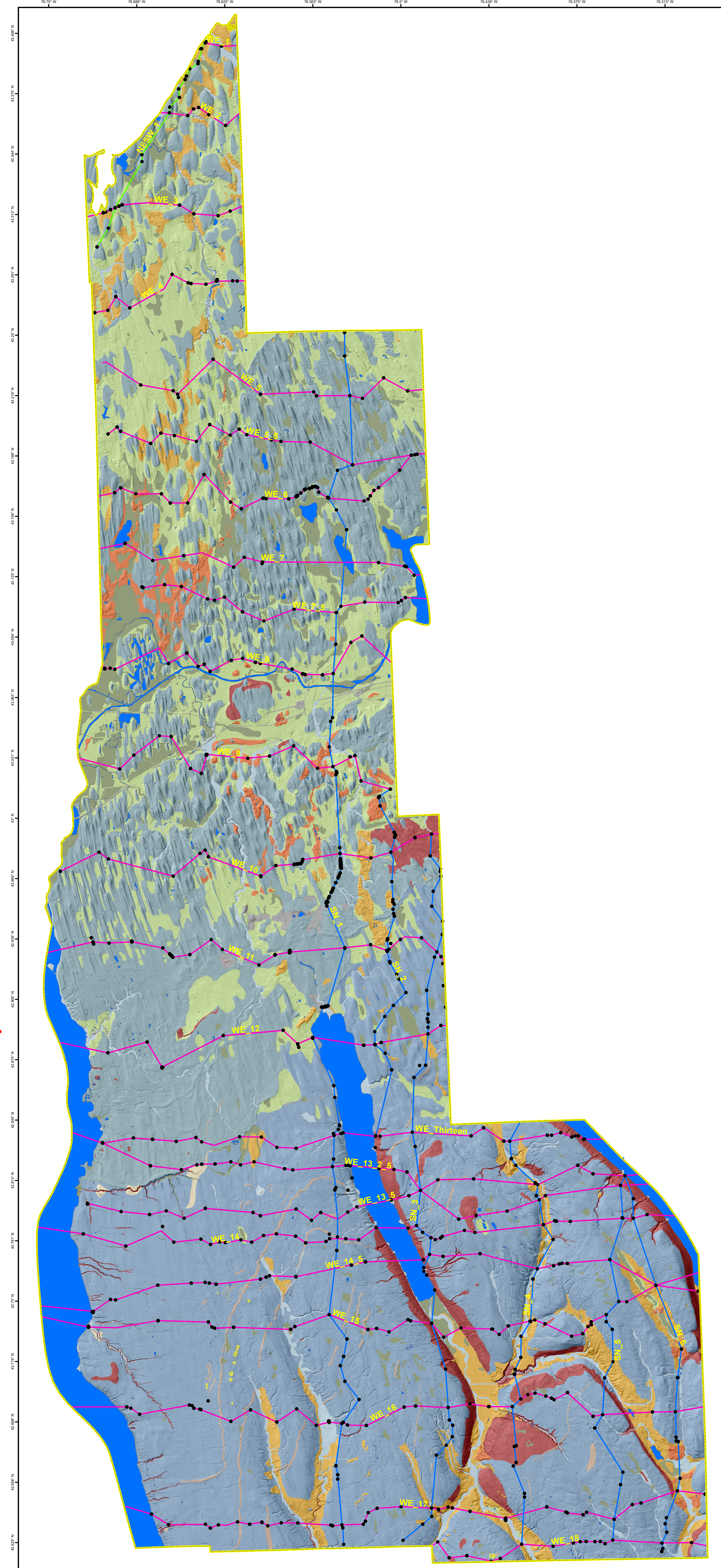


### NORTH-SOUTH CROSS-SECTIONS



#### SURFICIAL GEOLOGIC UNITS

Holocene	
Af	Artificial Fill (Af) This unit is generally composed consists of coarse-to-fine, materials such as large cement mounds or crushed rock, which have been transported anthropogenically transported and used for construction purposes.
Ha	Stratified silt, sand and gravel (Ha) Sorted and stratified silt, sand, and gravel, deposited by rivers and streams. May include cobbles and boulders. Inferred as post-glacial alluvium and includes modern channels, over-bank and fan deposits.
Hw	Wetland Deposit (Hw) Peat, muck, marl, silt, clay or sand deposited in association with wetland environments. Various sediments can be present at transitional boundaries from one facies to another.
Pleistocene	
Ps	Stratified Sand (Ps) Well sorted and stratified sand, deposited by fluvial, lacustrine or eolian processes. Inferred as deposits associated with distal glacial environments.
Pisc	Silt and Clay (Pisc) Stratified, fine-grained sediment consisting of fine sand, silt and clay size particles. Inferred to be deposited in mid shore to deepwater settings of glacial lakes. May include marl, rhythmites, and varves.
Pics	Cobbles to Sand (Pics) Stratified, fine-grained sediment consisting of boulders to sand size particles. Inferred to be deposited along an ice margin. May include, interbedded coarse lenses of gravel and clast-supported diamictons (flow till).
Pics-lw	Ice Contact Silt and Clay (Pics-lw) Stratified, fine-grained sediment consisting of fine sand, silt and clay size particles. Constrained to isolated pockets, inferred to be deposited in circular depressions within or on former ice sheets.
Psg	Stratified sand and gravel (Psg) Well-sorted and stratified sand and gravel. May include cobbles and boulders. Inferred to be delta, fan or lag deposits in glacial channels or near former ice margins.
Pd	Diamiction (Pd) An admixture of unsorted sediment ranging from clay to boulders. Generally matrix-supported, massive and clast-rich.
Pdmm	Diamiction (Pdmm) An admixture of unsorted sediment ranging from clay to boulders. Generally matrix-supported, massive and clast-rich. Generally found at or north of the Mastepan Moraine in Union Springs, Cayuga County, New York.
Pdcs	Diamiction (Pdcs) An admixture of unsorted sediment ranging from clay to boulders. Generally clast-supported, massive and clast-rich.
Pre-Pleistocene	
Br	Bedrock (Br) Non-glacially derived, hard rock, pre-Pleistocene in age. May be covered up to a meter in diamiction, sand and gravel, or sand and clay in areas marked as Br.

#### GEOGRAPHIC SYMBOLS

- County Line
- Well Location
- Cross-Section Lines**
- N-S
- NE-SW
- W-E

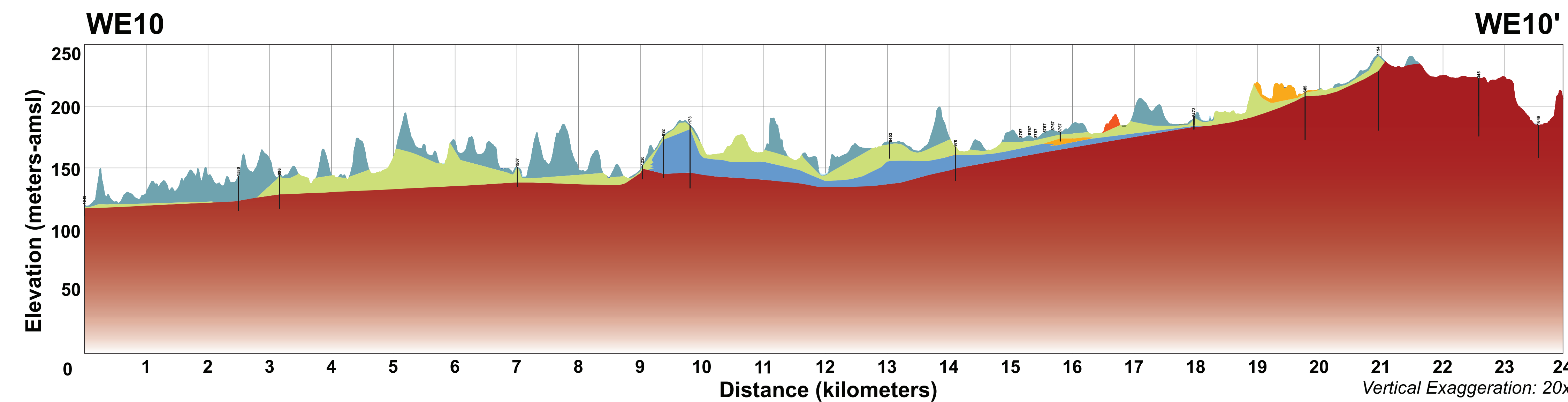
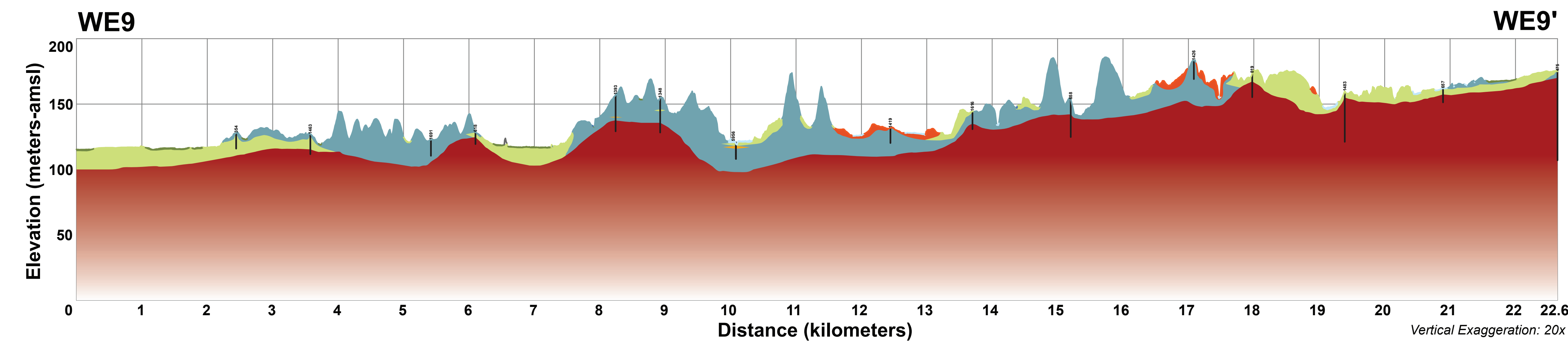
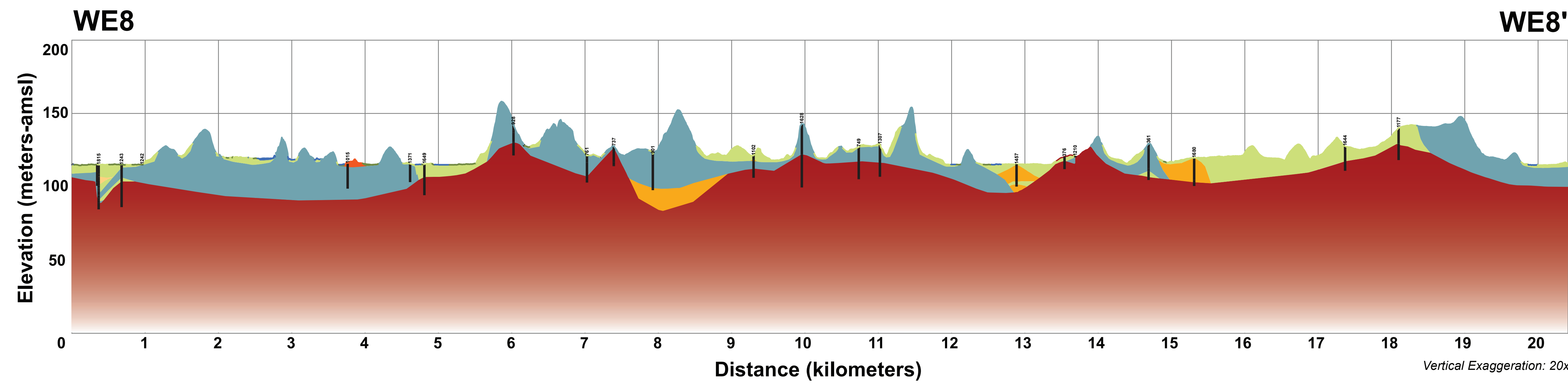
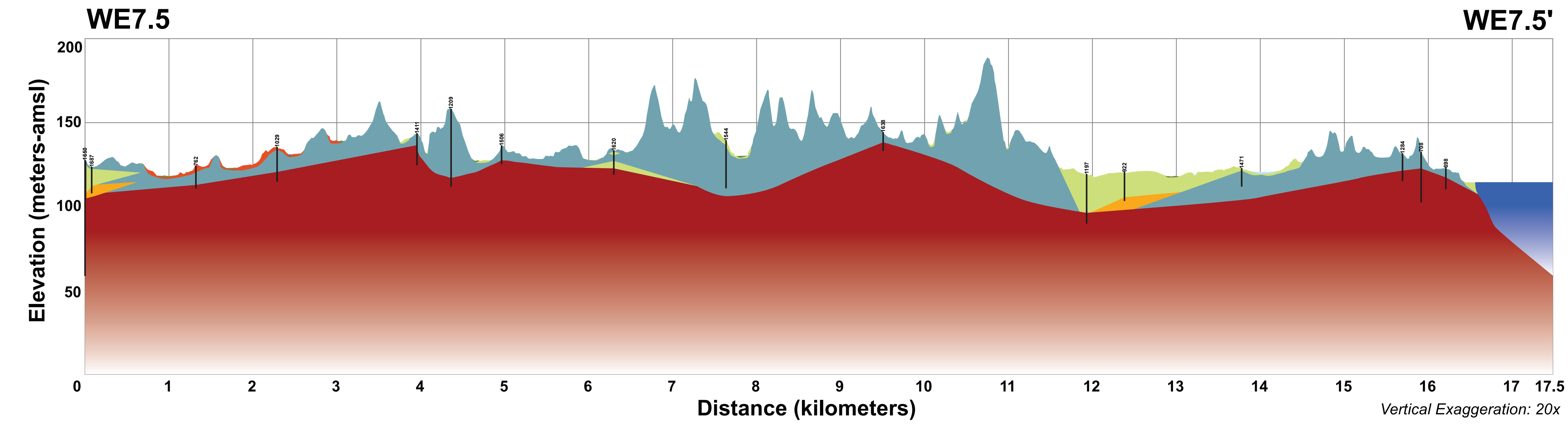
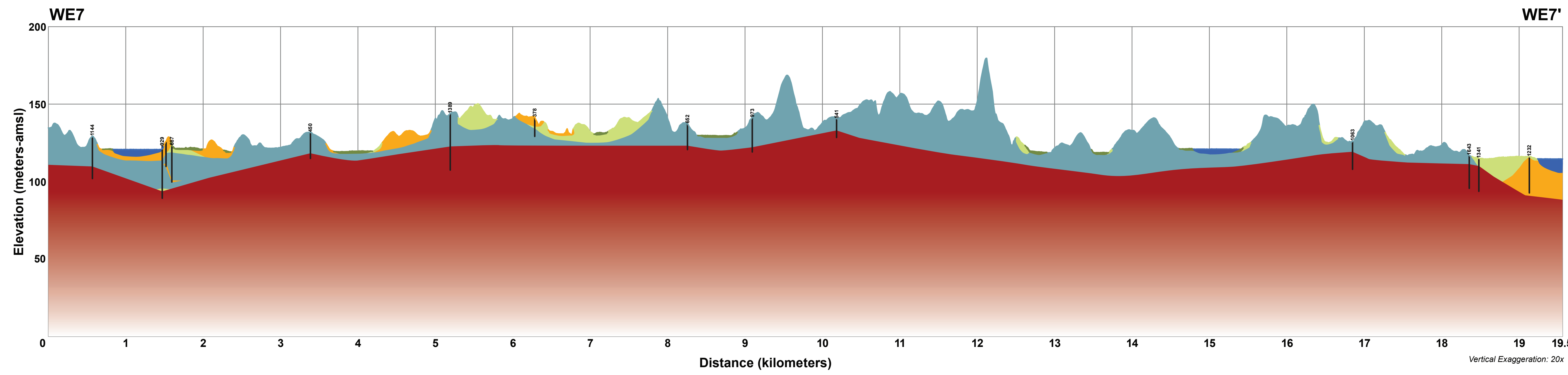
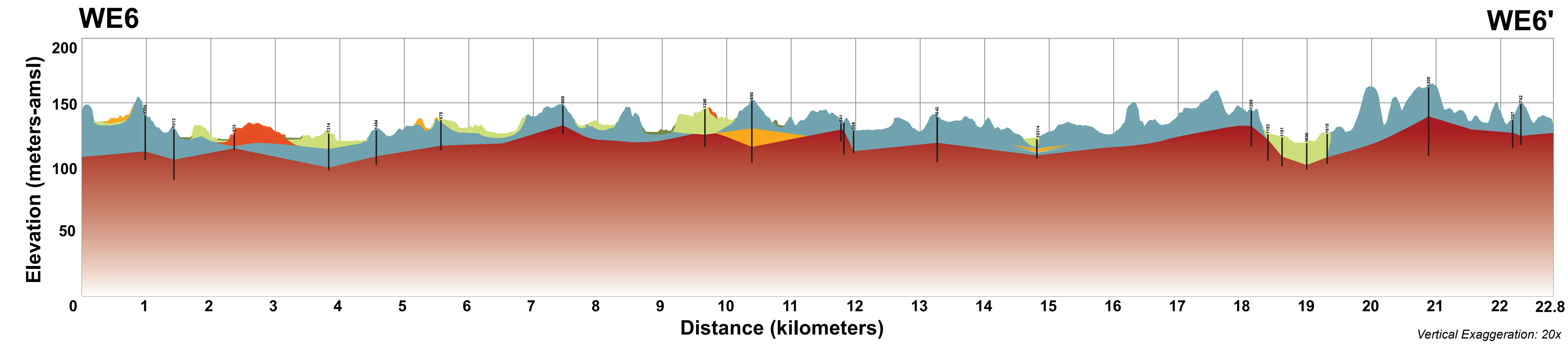
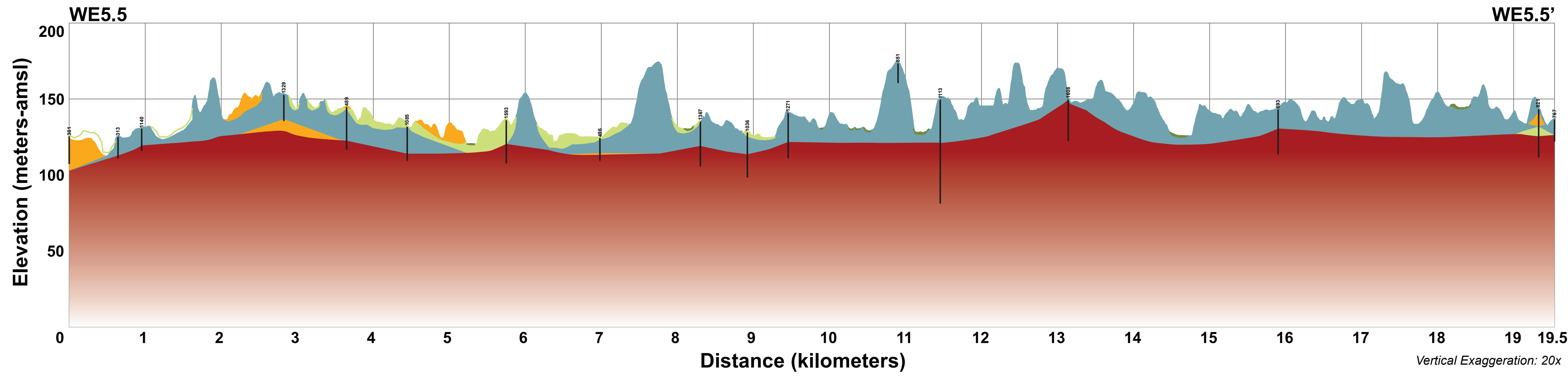
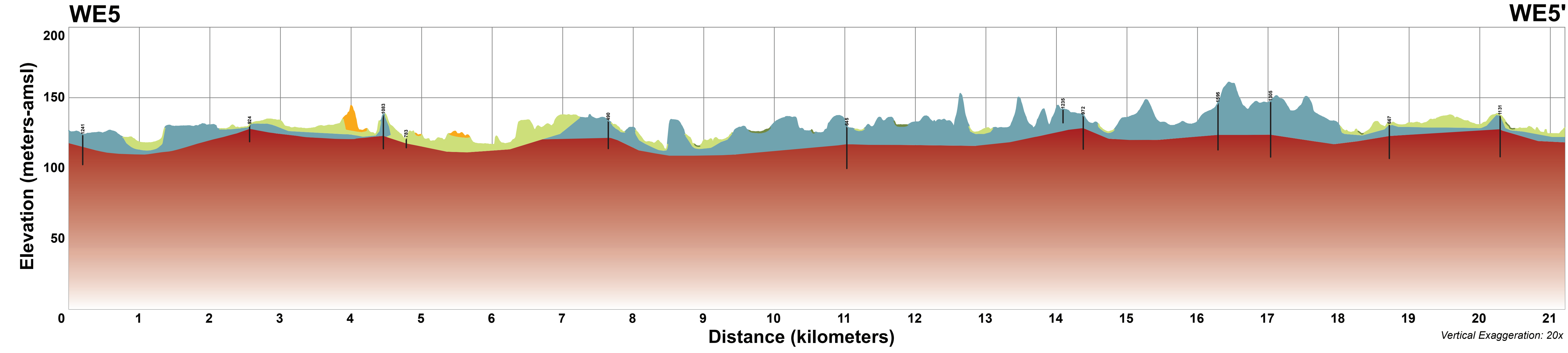
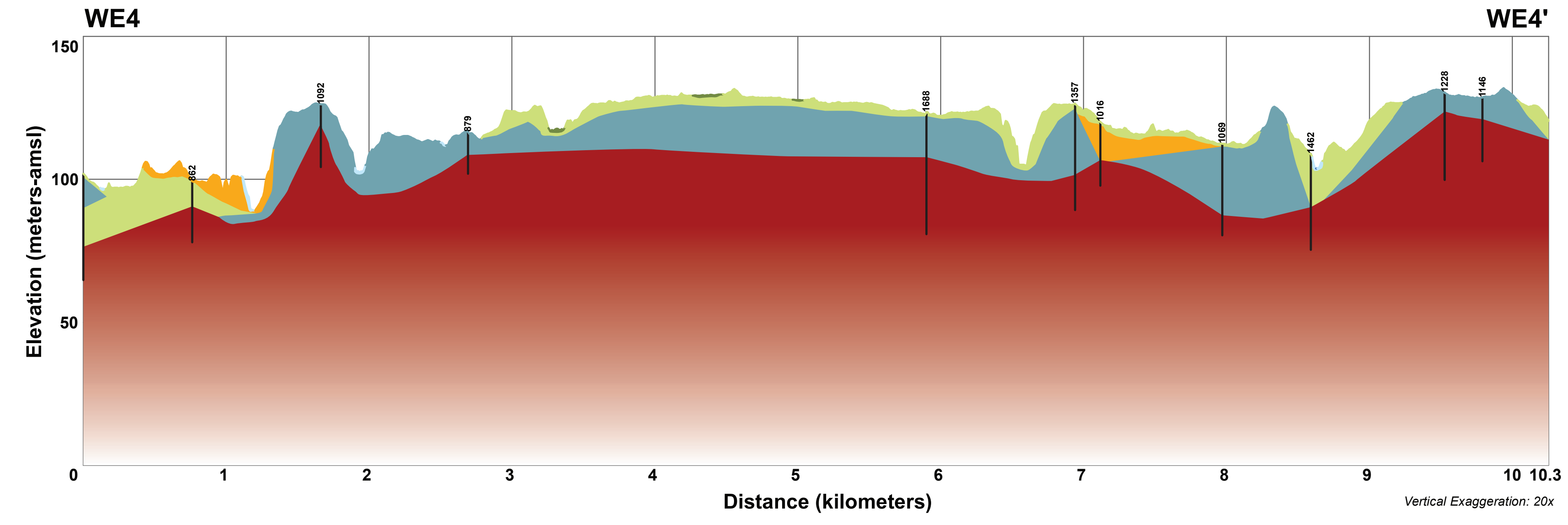
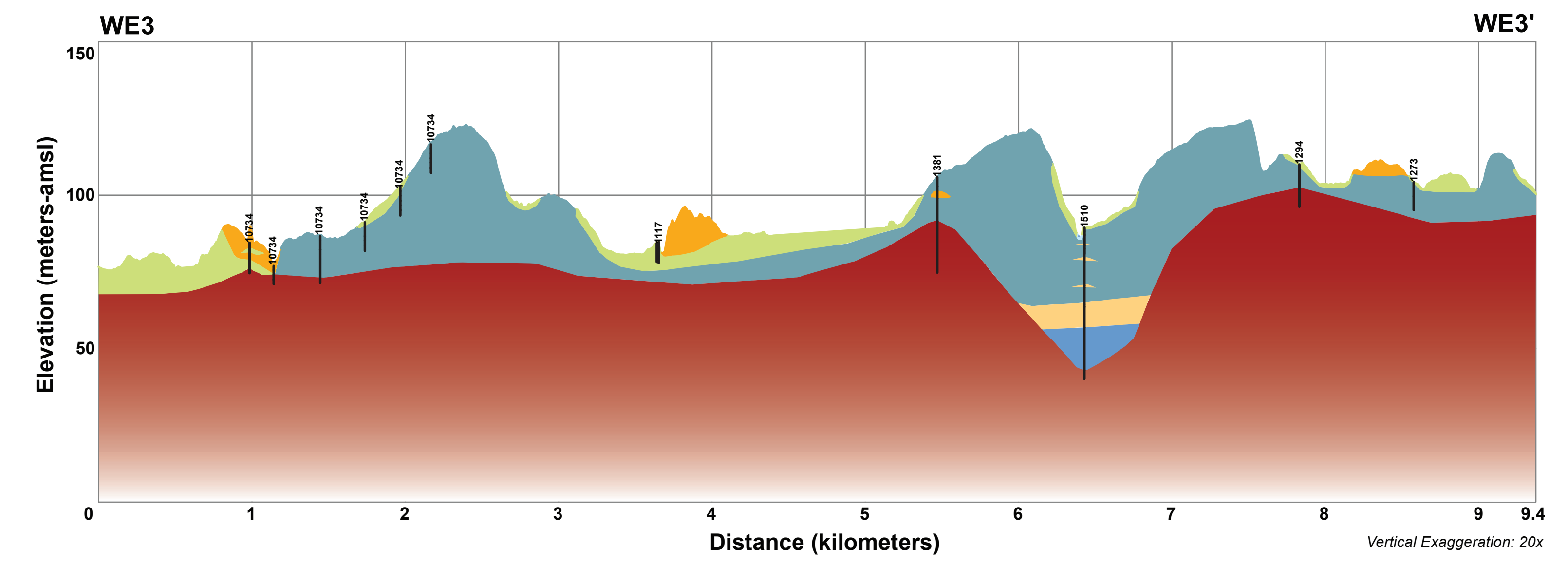
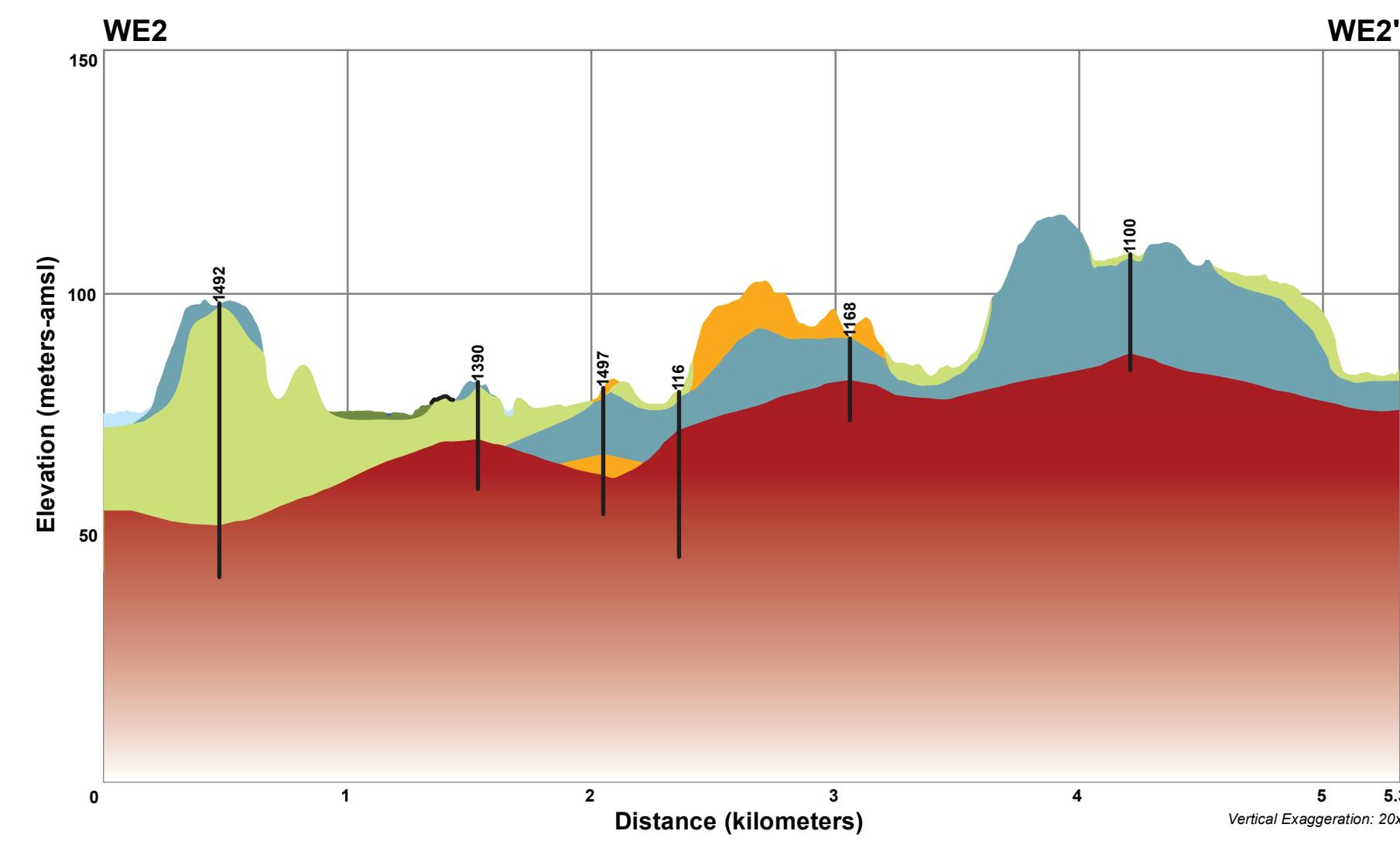
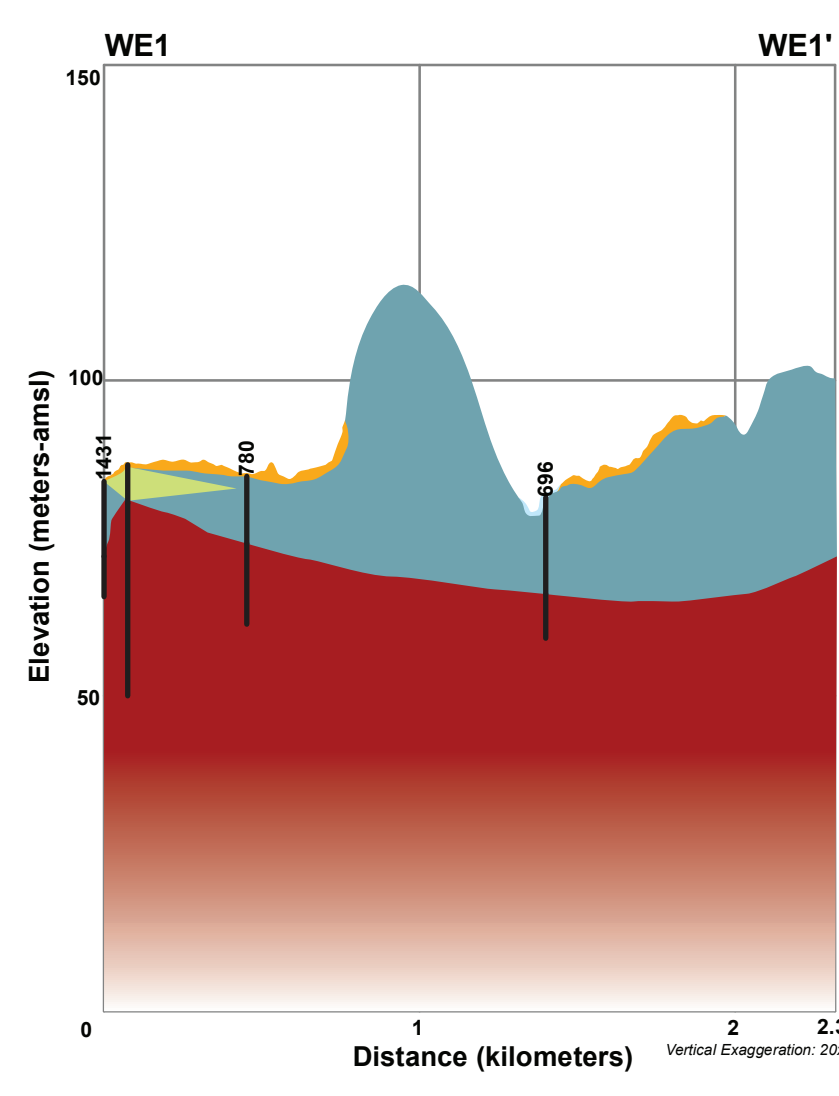
NOTICE  
This document was prepared in part by the USGS National Cooperative Geologic Mapping Program STATEMAP award number G20AC00338 in the year 2021.  
The views and conclusions contained in this document are those of the authors and should not be interpreted as necessarily representing the official policies, either expressed or implied, of the U.S. Government.  
While every effort has been made to ensure the accuracy of this digital map and the textual data upon which it is based, the New York State Geological Survey (NYSGS) makes no representation or warranty, expressed or implied, with regard to the accuracy, completeness, or usefulness of any particular information on this map and text, and urges independent site-specific verification of the information contained herein. Any use of these products, or their contents, for any purpose other than the intended purpose is not warranted by the USGS.

**The New York State Museum/ Geological Survey**  
Cultural Education Center  
222 Madison Avenue  
Albany, NY 12230  
Website: <http://www.nysm.nysed.gov/>  
Phone: (518) 474-5612  
Email: [nysmresearchcollections@nysed.gov](mailto:nysmresearchcollections@nysed.gov)

# SURFICIAL AND SUBSURFACE GEOLOGY OF CAYUGA COUNTY, NEW YORK

prepared by  
Karl J. Backhaus and Andrew L. Kozlowski  
Supported in part by the U.S. Geological Survey's  
National Cooperative Geologic Mapping Program Great Lakes Mapping Coalition Award Number G20AC00338

## WEST- EAST CROSS-SECTIONS



This geologic map was drafted in part by the USGS National Cooperative Geologic Mapping Program (STATMAP) award number G20AC00338 in June 2011.  
The views and conclusions contained in this document are those of the authors and should not be interpreted as necessarily representing the official policies, either expressed or implied, of the U.S. Government.  
While every effort has been made to ensure the integrity of this digital map and the related data upon which it is based, the New York State Geological Survey (NYSGS) makes no representation or warranty, expressed or implied, regarding the accuracy, completeness, or suitability for any particular purpose or use. NYSGS assumes no liability for damages, resulting from the use of any information, especially, methods or processes disclosed in this map and data, and does not warrant the specific reliability of the information contained herein. Any use of trade, product, or firm names is for descriptive purposes only and does not imply endorsement by NYSGS.



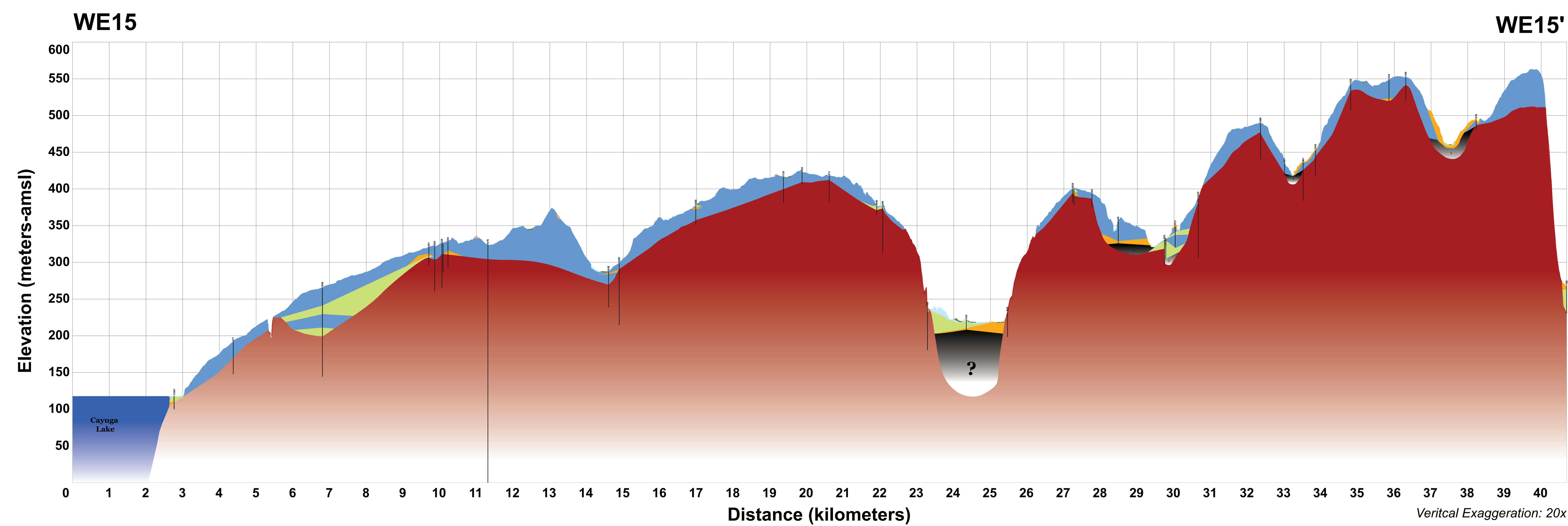
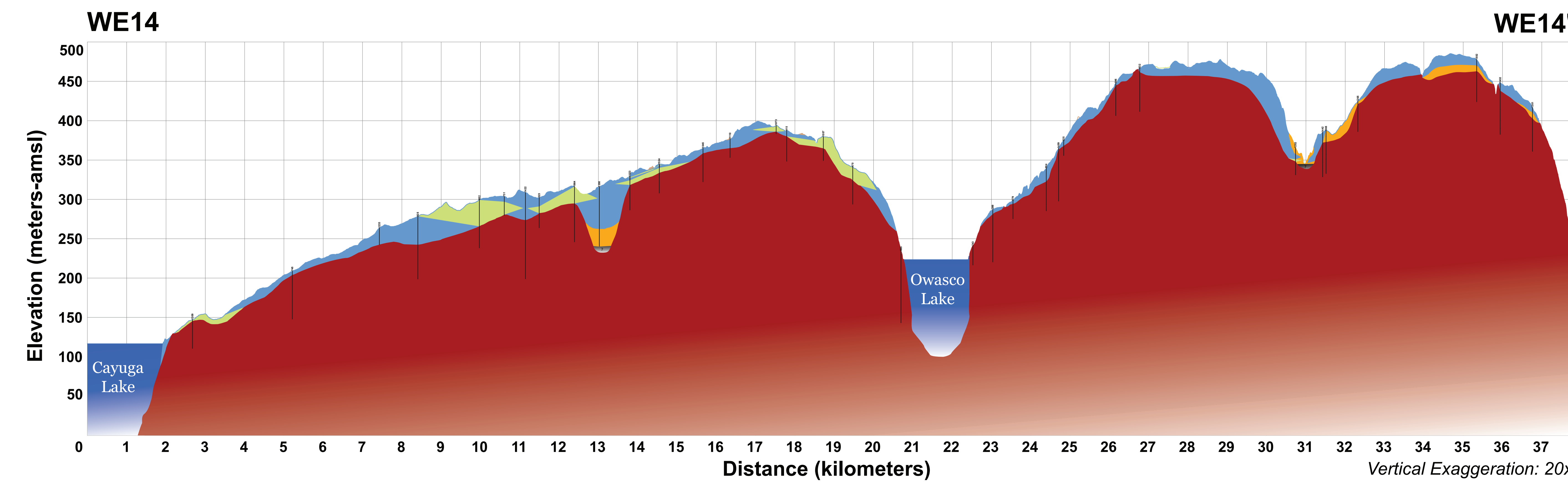
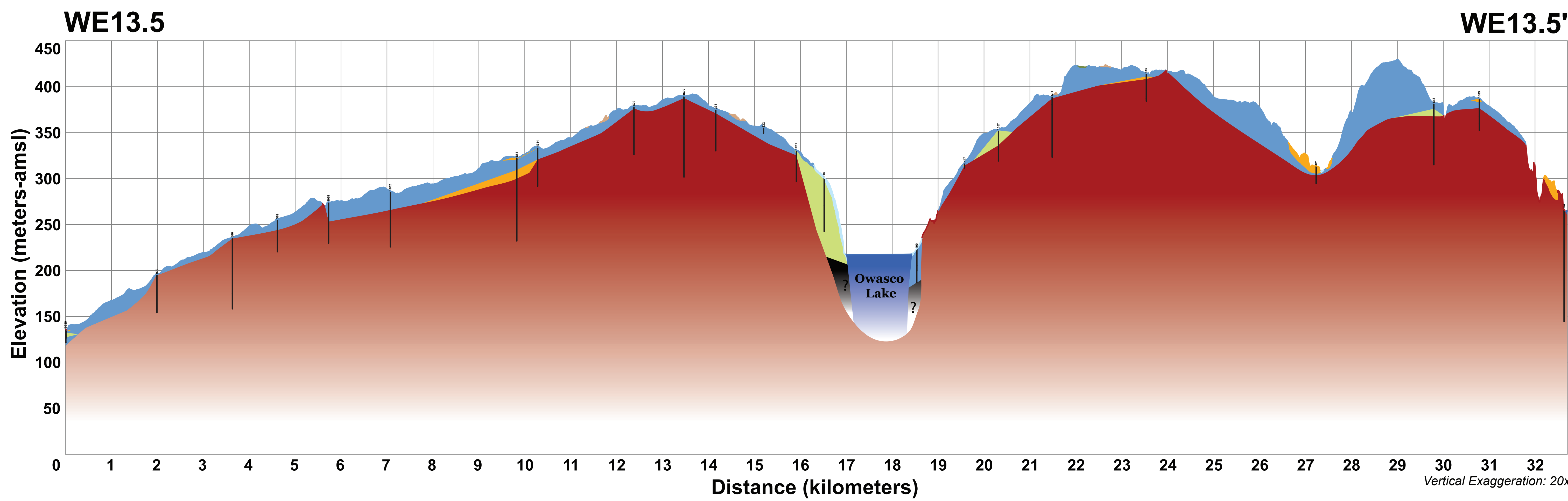
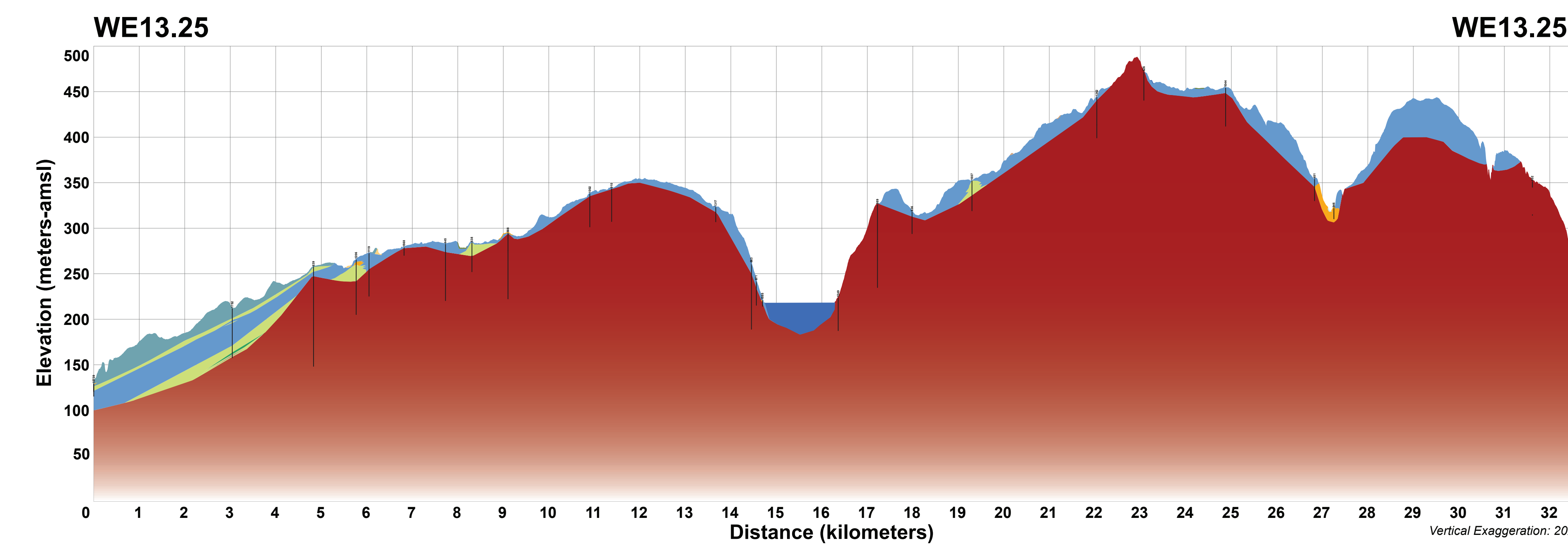
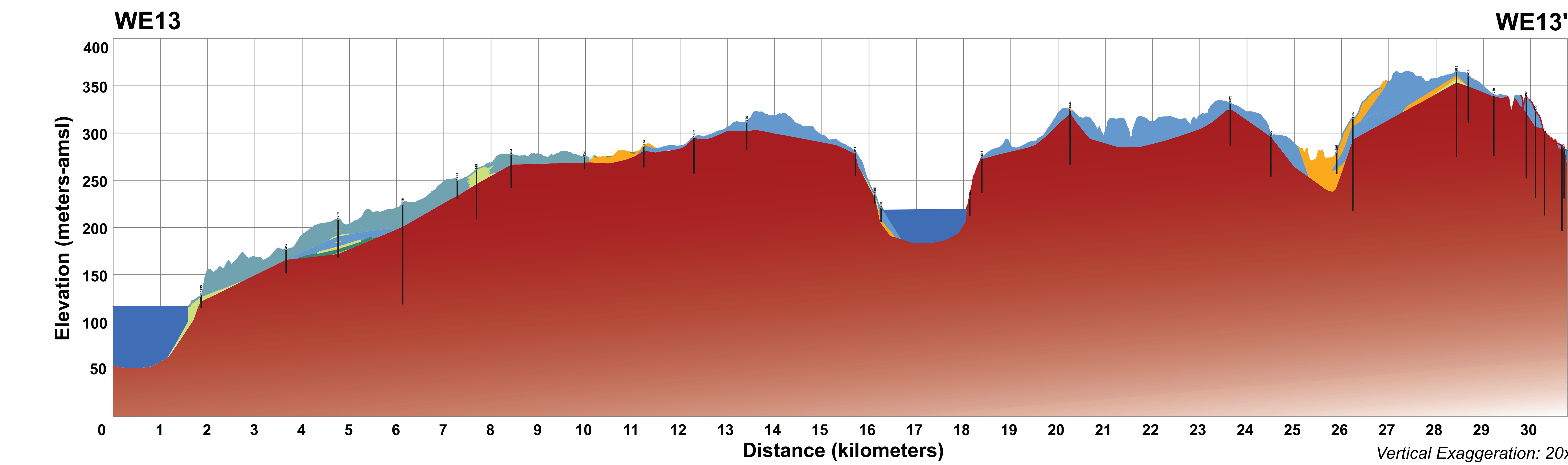
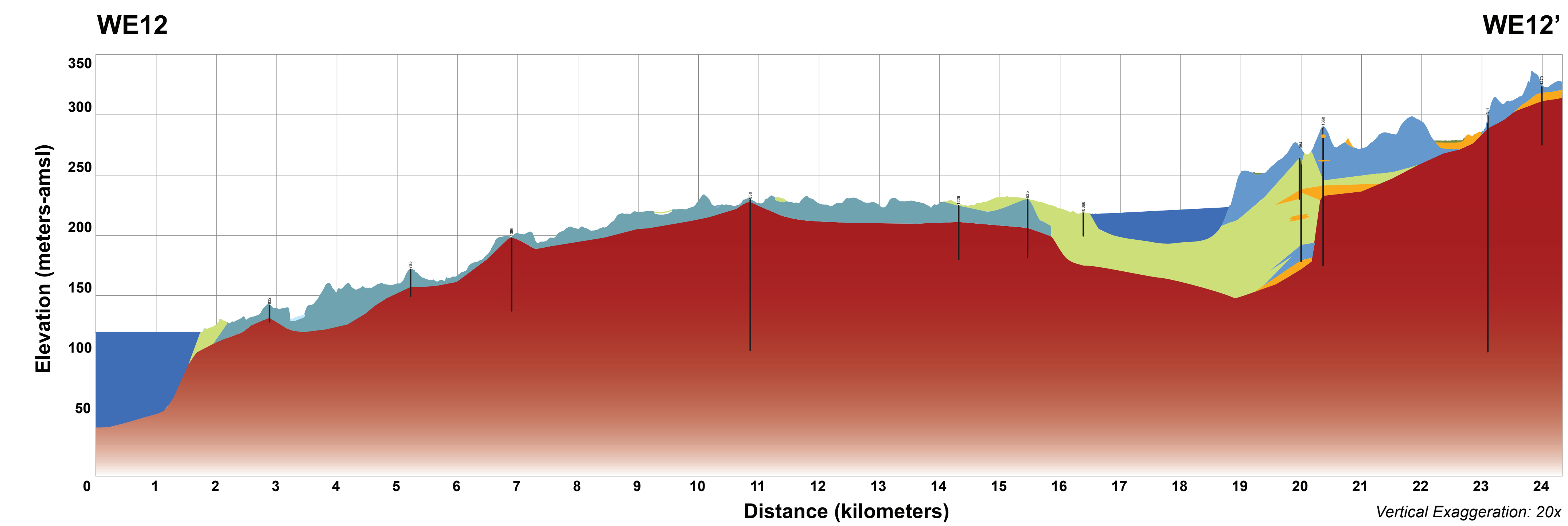
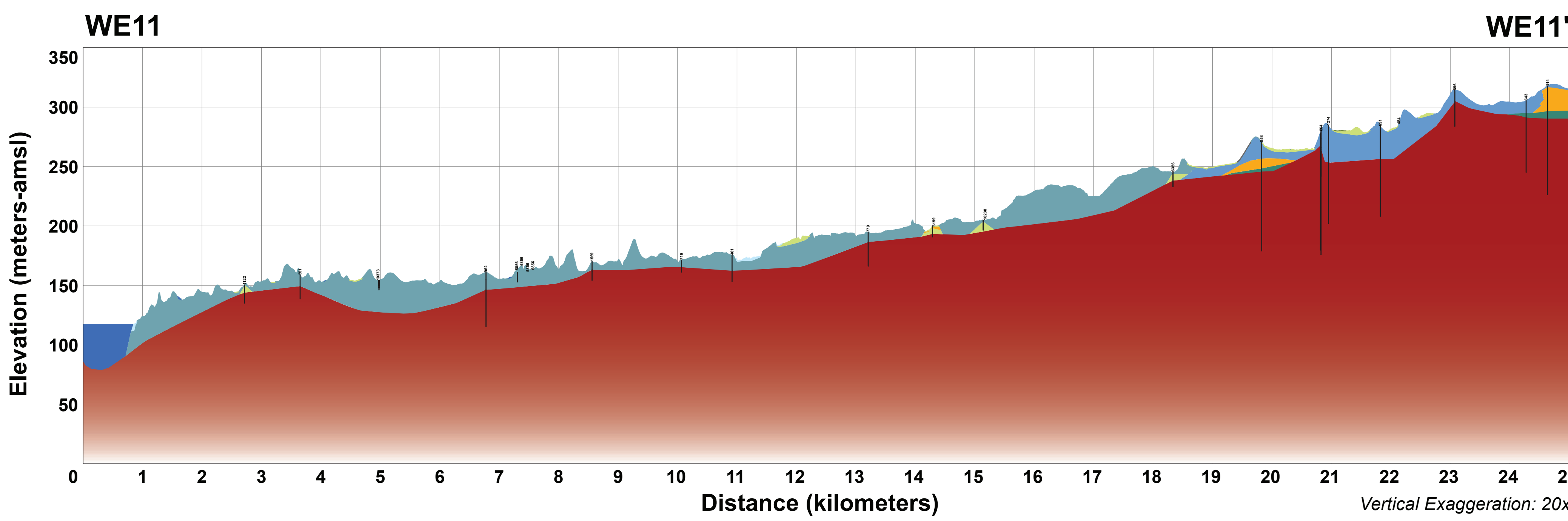
The New York State Museum/ Geological Survey  
Cultural Education Center  
222 Madison Avenue  
Albany, NY 12230  
Website: <http://www.nysm.nysed.gov/>  
Phone: (518) 474-5812  
Email: [nysmresearchcollections@nysed.gov](mailto:nysmresearchcollections@nysed.gov)

**SURFICIAL AND SUBSURFACE GEOLOGY OF CAYUGA COUNTY, NEW YORK**

prepared by  
Karl J. Backhaus and Andrew L. Kozlowski

Supported in part by the U.S. Geological Survey's  
National Cooperative Geologic Mapping Program Great Lakes Mapping Coalition Award Number G20AC00338

**WEST- EAST CROSS-SECTIONS**



This geologic map was funded in part by the USGS National Cooperative Geologic Mapping Program STATEMAP award number G20AC00338 in the year 2021.  
The views and conclusions contained in this document are those of the authors and should not be interpreted as necessarily representing the official policies, either expressed or implied, of the U.S. Government.  
While every effort has been made to ensure the integrity of the digital files and the fidelity of the data upon which it is based, the New York State Education Department (NYSED) makes no representation or warranty, expressed or implied, with respect to its accuracy, completeness, or usefulness for any particular purpose or activity. NYSED assumes no liability for damages resulting from the use of any information, materials, methods, or products described in this map and file, and does not warrant the specific accuracy of the information contained herein. Any use of trade names or firm names is for descriptive purposes only and does not imply endorsement by NYSED.

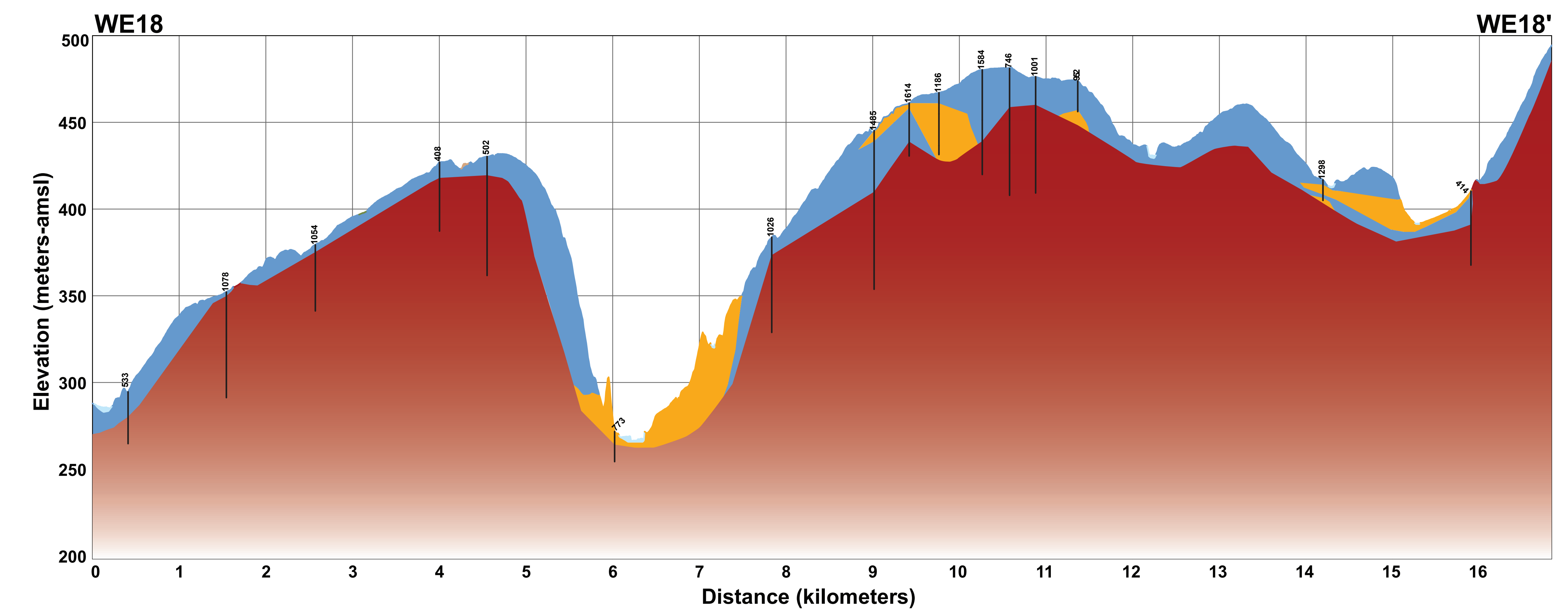
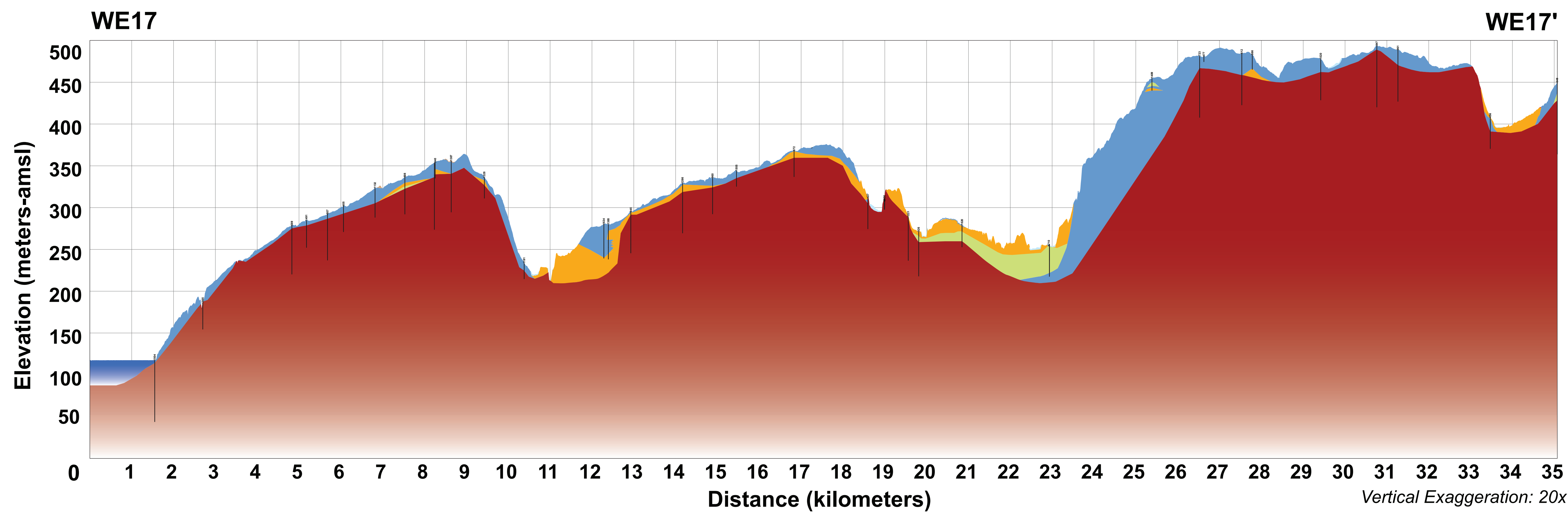
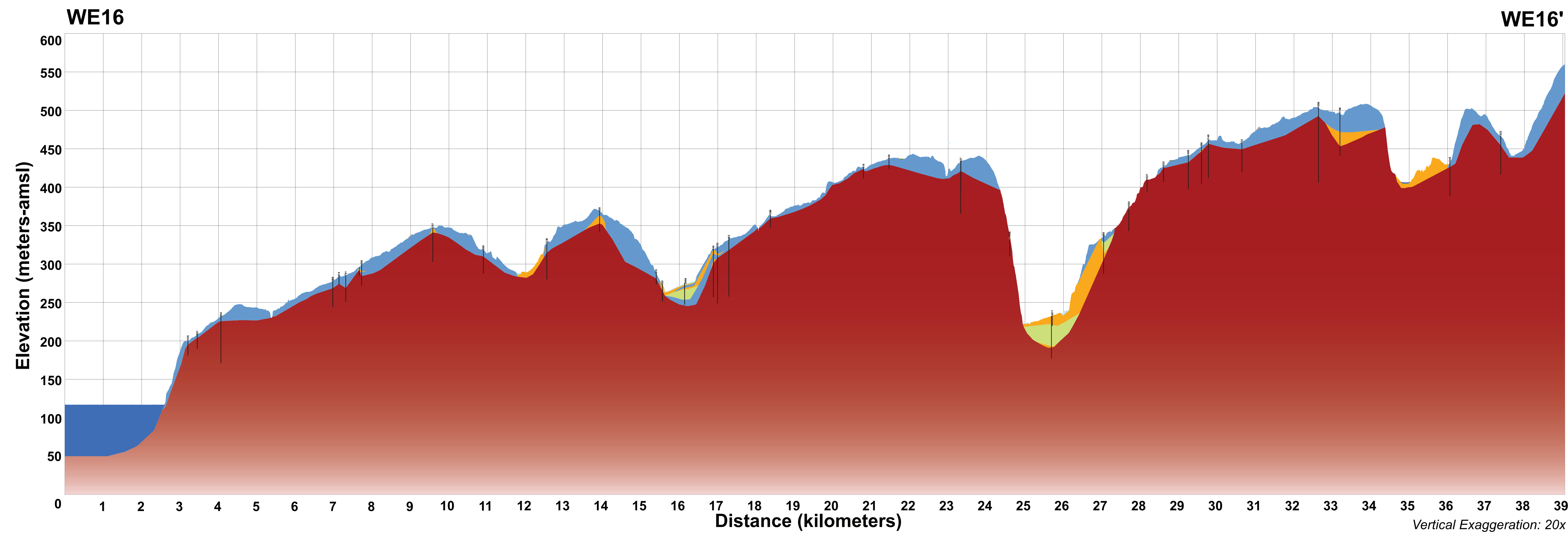
**The New York State Museum/ Geological Survey**  
Cultural Education Center  
222 Madison Avenue  
Albany, NY 12250  
Website: <http://www.nysm.nysed.gov/>  
Phone: (518) 474-5812  
Email: [nysmresearchcollections@nysed.gov](mailto:nysmresearchcollections@nysed.gov)

SURFICIAL AND SUBSURFACE GEOLOGY OF CAYUGA COUNTY, NEW YORK

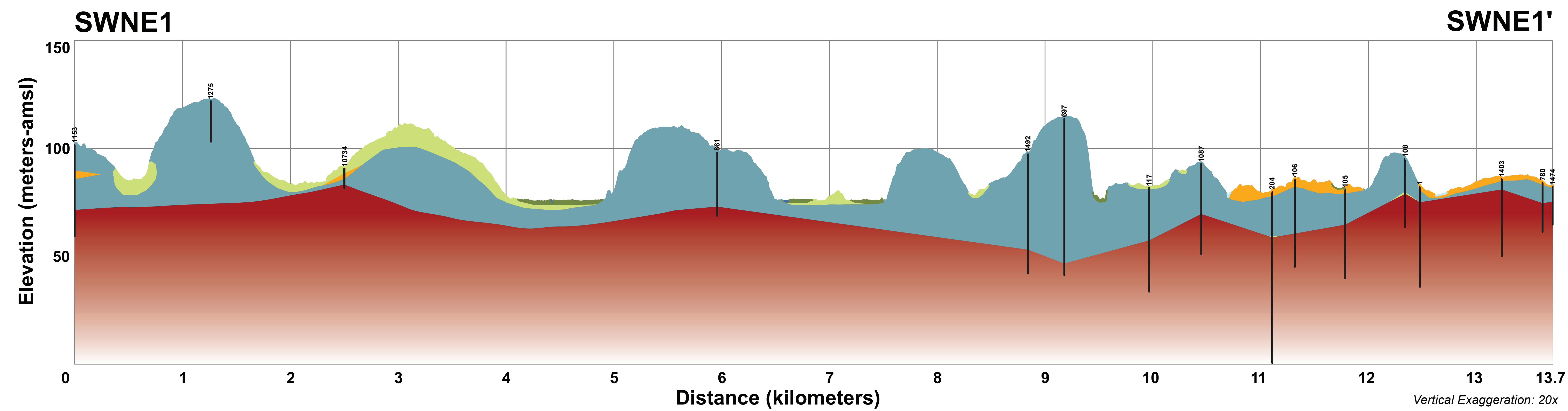
prepared by  
Karl J. Backhaus and Andrew L. Kozlowski

Supported in part by the U.S. Geological Survey's  
National Cooperative Geologic Mapping Program Great Lakes Mapping Coalition Award Number G20AC00338

WEST- EAST CROSS-SECTIONS



SOUTHWEST- NORTHEAST CROSS-SECTION



This geologic map was drafted in part by the USGS National Cooperative Geologic Mapping Program STATEMAP award number G20AC00338 in the year 2011.  
The views and conclusions contained in this document are those of the authors and should not be interpreted as necessarily representing the official policies, either expressed or implied, of the U.S. Government.  
While every effort has been made to ensure the integrity of the digital map and the hardcopy data upon which it is based, the New York State Department of Environmental Conservation (NYSDEC) makes no representation or warranty, expressed or implied, with respect to its accuracy, completeness, or conditions for any particular purpose or use. NYSDEC disclaims any liability for damages resulting from the use of any information, equipment, method, or product described in this map and file, and agrees to indemnify the author, publisher of the microform (if any), and any user of this product or file from any and all claims, damages, or liabilities, including those of the NYSDEC.

The New York State Museum/ Geological Survey  
Cultural Education Center  
222 Madison Avenue  
Albany, NY 12230  
Website: <http://www.nysm.nysed.gov/>  
Phone: (518) 474-5812  
Email: [nysmresearchcollections@nysed.gov](mailto:nysmresearchcollections@nysed.gov)