

SURFICIAL GEOLOGY OF THE BEARSVILLE 7.5-MINUTE QUADRANGLE, GREENE AND ULSTER COUNTIES, NEW YORK

prepared by
Janet Manchester¹ and Karl J. Backhaus

Supported in part by the U.S Geological Survey Cooperative Agreement as part of the
National Cooperative Geologic Mapping Program (STATEMAP)

DESCRIPTION OF MAP UNITS

Holocene

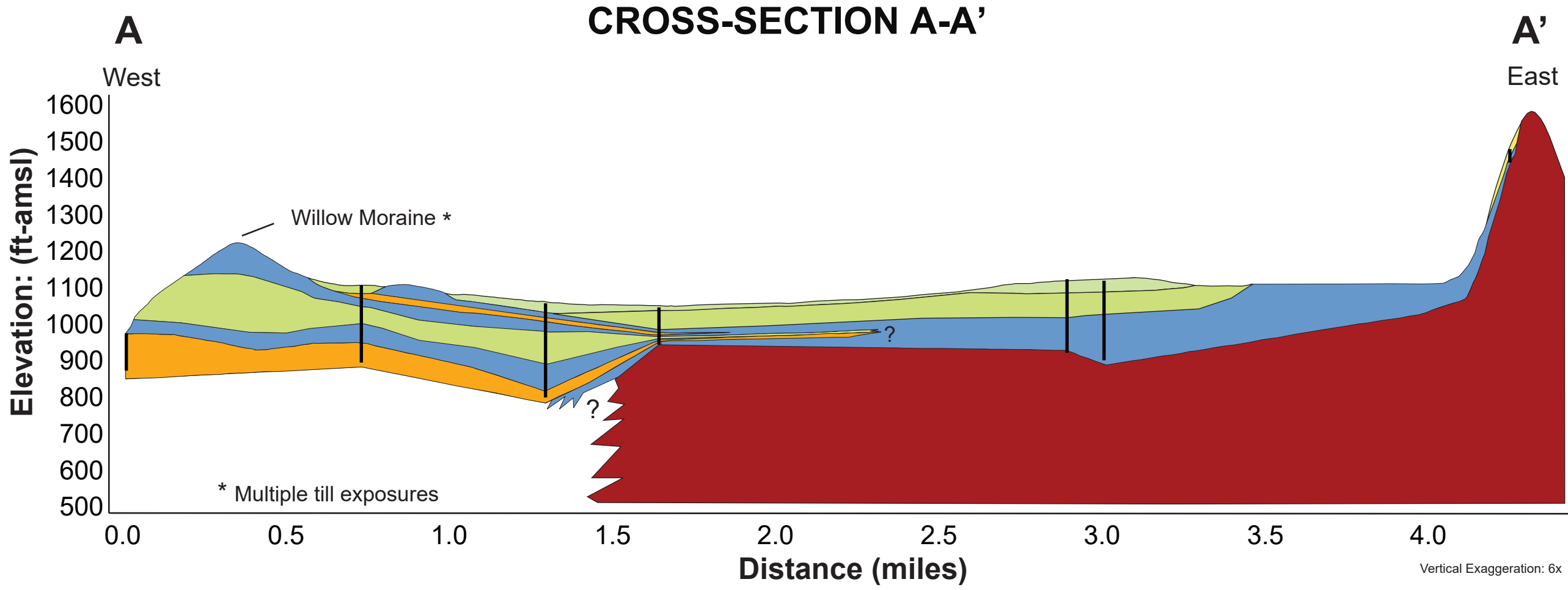
- Ha** **Stratified silt, sand and gravel (Ha)**
Sorted and stratified silt, sand, and gravel, deposited by rivers and streams. May include cobbles and boulders. Inferred as post-glacial alluvium and includes modern channel, over-bank and fan deposits
- Hw** **Wetland Deposit (Hw)**
Peat, muck, marl, silt, clay or sand deposited in association with wetland environments. Various sediments can be present at transitional boundaries from one facies to another
- Hdc** **Diamict Colluvium (Hdc)**
Unsorted and unstratified deposit of gravel, sand, silt, clay, with boulders/cobbles possible. Described as a mass-wasting deposit at the base of steep hillslopes and cliffs as part of a slump or hillslope failure.

Pleistocene

- Plsc** **Silt and Clay (Psc)**
Stratified, fine-grained sediment consisting of fine sand, silt and clay size particles. Inferred to be deposited in mid shore to deepwater settings of glacial lakes. May include marl, rythmites, and varves.
- Pics** **Cobbles to Sand (Pics)**
Stratified ice contacted deposits, variable coarse-grained sediment consisting of boulders to sand size particles. Inferred to be deposited along an ice-margin. May include, interbedded coarse lenses of gravel and clast supported diamictons (flow tills).
- Psg** **Stratified sand and gravel (Psg)**
Well-sorted and stratified sand and gravel. May include cobbles and boulders. Inferred to be delta, fan or lag deposits in glacial channels or near former ice margins.
- Pd** **Diamicton (Pd)**
An admixture of unsorted sediment ranging from clay to boulders. Generally matrix supported, massive and clast-rich. Can be found to be a thin layer over bedrock to several feet thick. Some areas within this quadrangle were found to be a sub-aqueous deposit.

Pre-Pleistocene

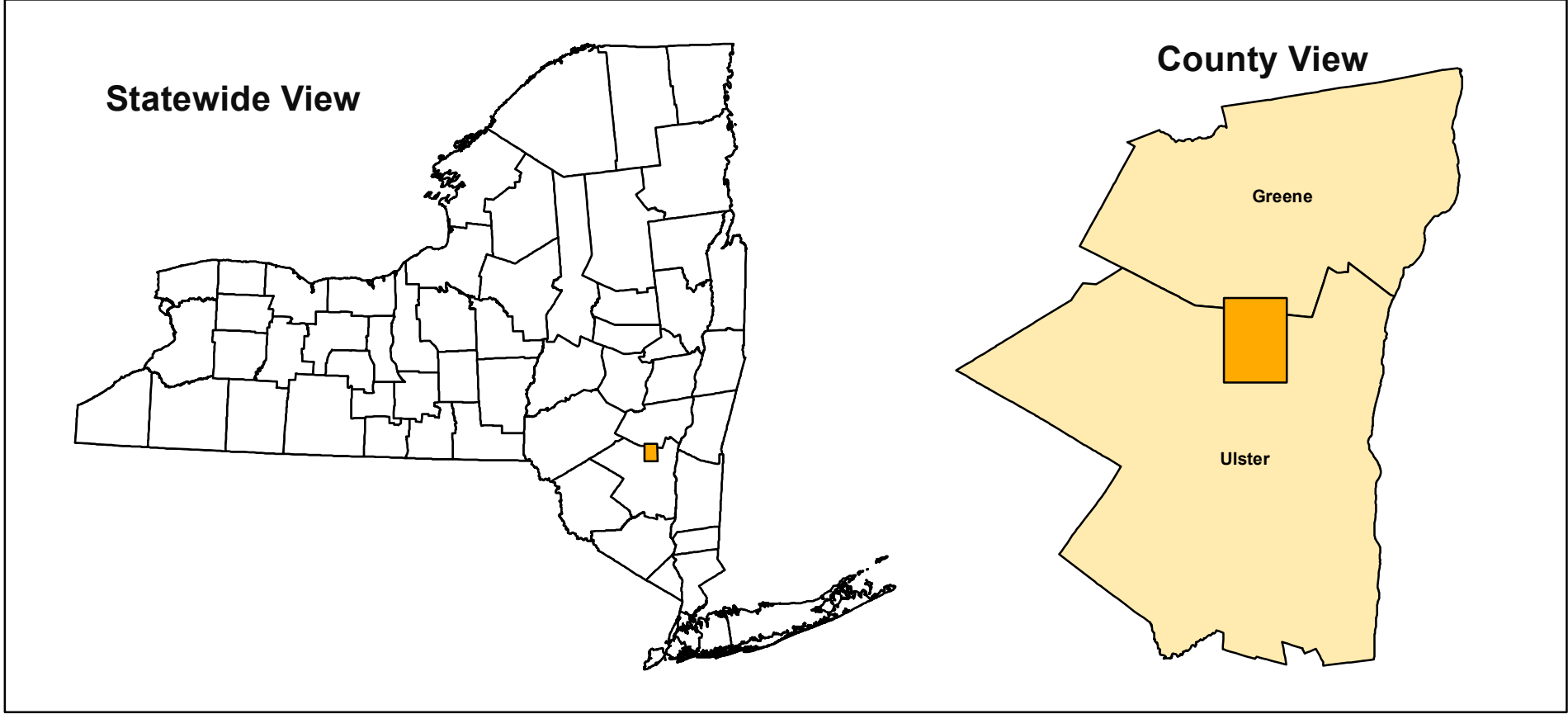
- Br** **Bedrock (Br)**
Non-glacially derived, hard rock, pre-pleistocene in age. May be covered up to a meter in diamicton, sand and gravel, or sand and clay in areas marked as Br.



SYMBOLS

- | | | | |
|-------------|--------------------|----------------------------|--------------------------|
| Streets | Water Bodies | NYSGS Borehole Location | Ice Margins |
| Highways | Streams | NYSDEC Water Well Location | Quaternary Terrace |
| Railroads | Contours | NYSDEC Boring Location | Fault Line |
| County Line | Cross-Section Line | Ice Flow Direction | Meltwater Channels |
| | | | Meltwater Flow Direction |

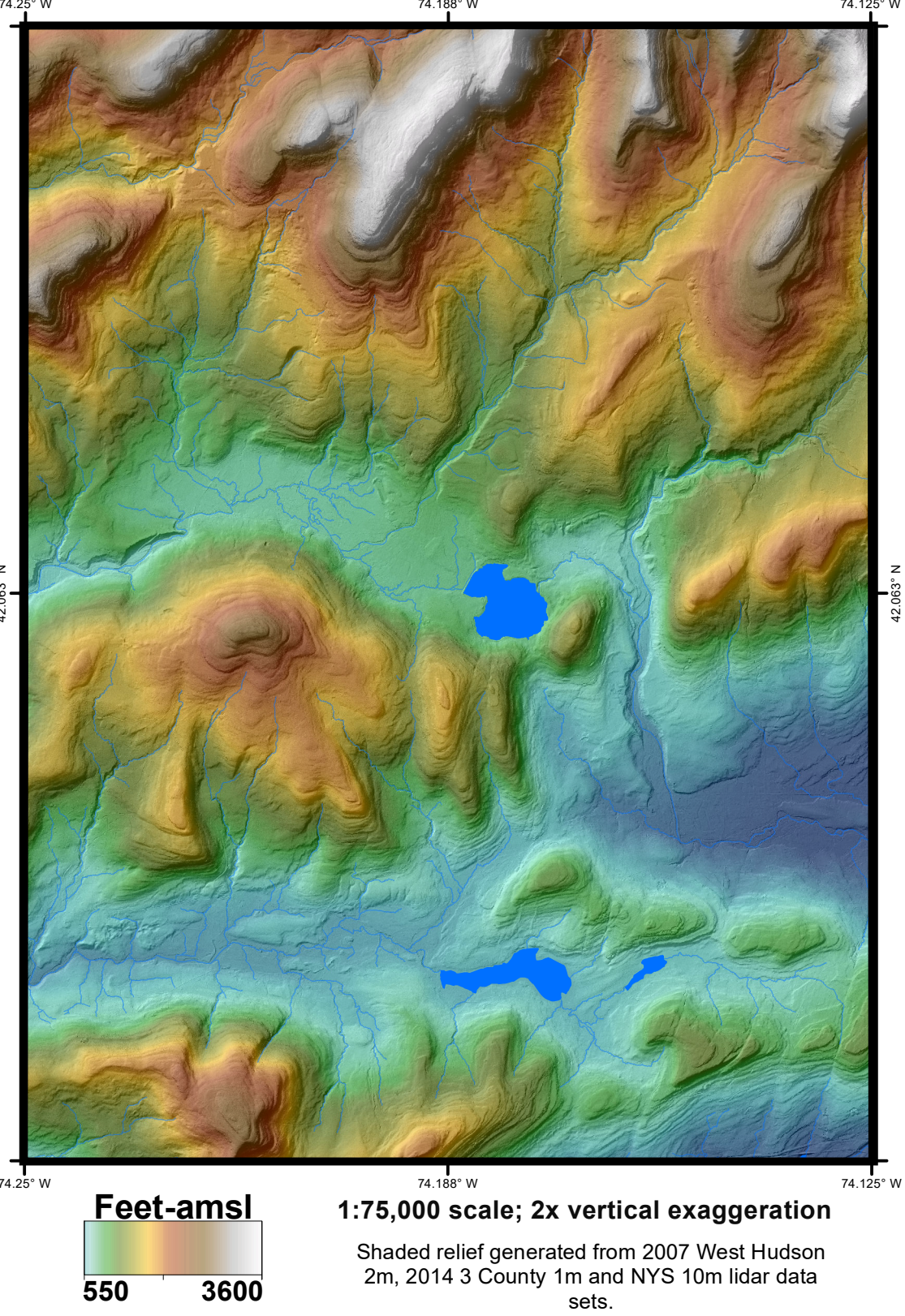
QUADRANGLE LOCATION



ADJOINING QUADRANGLES

| | | |
|-------------|-------------------|----------------|
| Lebanon | Hunter | Katamohi Clove |
| Phoenicia | Bearsville | Woodstock |
| West Spoken | Ashtoken | Kingsport West |

QUADRANGLE ELEVATION



SURFICIAL GEOLOGY OF THE BEARSVILLE 7.5-MINUTE QUADRANGLE, GREENE AND ULSTER COUNTIES, NEW YORK

Andrew L. Kozlowski, Brian C. Bird, Colby A. Smith, Newton W. Krumdieck and Paul A. Stefanik
2010

NOTICE
This geologic map was funded in part by the USGS National Cooperative Geologic Mapping Program STATEMAP award in the year 2010.
The views and conclusions contained in this document are those of the authors and should not be interpreted as necessarily presenting the official policies, either expressed or implied, of the U.S. Government.
While every effort has been made to ensure the integrity of this digital map and the factual data upon which it is based, the New York State Education Department ("NYSED") makes no representation or warranty, expressed or implied, with respect to its accuracy, completeness, or usefulness for any particular purpose or scale. NYSED assumes no liability for damages resulting from the use of any information, apparatus, method, or process disclosed in this map and text, and urges independent site-specific verification of the information contained herein. Any use of trade, product, or firm names is for descriptive purposes only and does not imply endorsement by NYSED.